

# Prime Ski Land Bordering World Class USA Ski Resort for \$9900 per Acre

*Beautiful and Developable Acres Sold in Bulk or Single Acres. Massive Equity Potential*

OGDEN, UTAH, USA, June 20, 2014  
/EINPresswire.com/ -- Location Location Location

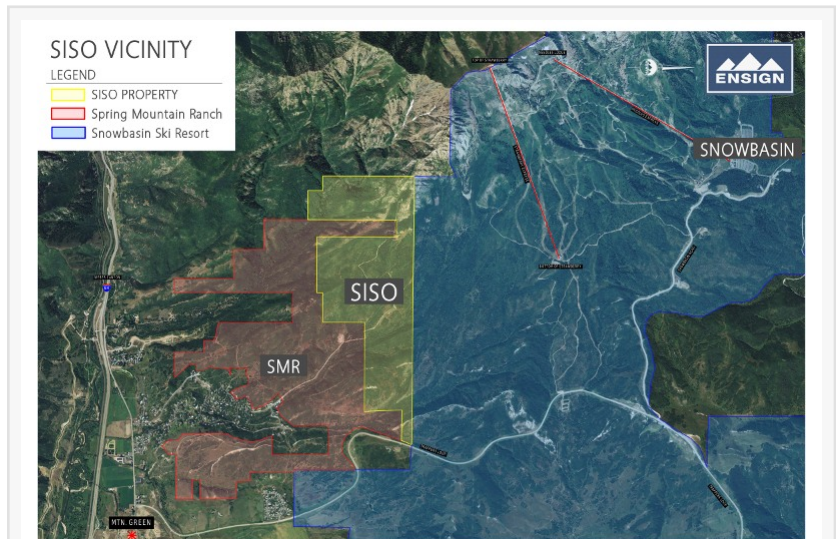
Back in 2002, before the Winter Olympics held in Salt Lake City, Utah, investors bought land from \$15,000 to \$50,000 per acre in and around Park City. TODAY - if you can find it - the prices range from \$200K up to \$750K per acre, and It is near impossible to find ski in or ski out land in any Utah ski resort area under \$500 and even harder to find a full acre at any price. That was then and this is NOW!!

So look nearby at Snowbasin Ski Resort, 35 minutes from Salt Lake International Airport was host to 22,500 spectators, as it was home to the downhill, super-g and combined competitions in the 2002 Winter Olympics... and BORDERING Snowbasin is SISO - Ski In Ski Out Utah - <http://sisoutah.com/>. Remember? Location, Location, Location. SISO Utah has it, among its other attractive features, the ONLY land priced less than pre-2002 Olympic at \$9,900 per acre... which is well below like for like land available, offering buyers a secured and profitable exit in 2 – 3 years.

Thanks to the vision of Mark Nelson and Kevin P Fleury, they, along with other

investors have made a true arbitrage investment of 813 acres adjacent to the resort. This site, previously landlocked, and with limited basic services, has been sought after for years.

The merger agreement between SISO and Spring Mountain Ranch brings SISO's 813 acres full services and substantially increases its value immediately.



SISO land borders Snowbasin from park to base.



Just 35 minutes from SLC International Airport

Bordering the resort and ski runs

- Thirty minutes to the SLCI airport
- Minutes from many local attractions
- Lowest priced land in the area
- Billion dollar development in progress next door
- Expert management team
- Location, location, location!!

Here's what you wind up with; Prime real estate in one of Utah's most desirable ski areas suitable for future residential and commercial development, a Billion dollar ski resort neighbour planned and approved within a short distance, instant equity and a secure partnership with a local team of experts and real estate professionals! Contact [PatrickF@sisoutah.com](mailto:PatrickF@sisoutah.com), if you would like to know how you can still get in on this opportunity!!!

[PatrickF@sisoutah.com](mailto:PatrickF@sisoutah.com)

Kevin Patrick Fleury  
SISO Utah LLC  
0044 7733122603  
email us here

---

This press release can be viewed online at: <http://www.einpresswire.com>

Disclaimer: If you have any questions regarding information in this press release please contact the company listed in the press release. Please do not contact EIN Presswire. We will be unable to assist you with your inquiry. EIN Presswire disclaims any content contained in these releases.  
© 1995-2015 IPD Group, Inc. All Right Reserved.