

2002 pricing today AND Location, Location, Location,

MOUNTAIN GREEN , UTAH, USA, July 8, 2014 /EINPresswire.com/ -- Back in 2002, before the Winter Olympics held in Salt Lake City, Utah, investors snapped up land, paying from \$15,000 to \$50,000 per acre in and around Park City. TODAY - if you can find one - the prices range from \$600K up to \$3 Million per full acre, and It is near impossible to find ski in or ski out land in any Utah ski resort area under \$1M and even harder to find a full acre at any price. SISO lots are ALL full acres.

That was then and this is NOW!! But just look nearby at Snowbasin Ski Resort, 35 minutes from Salt Lake International Airport where Snowbasin was host to 22,500 spectators, home to the downhill, super-g, and combined competitions in the 2002 Winter Olympics.

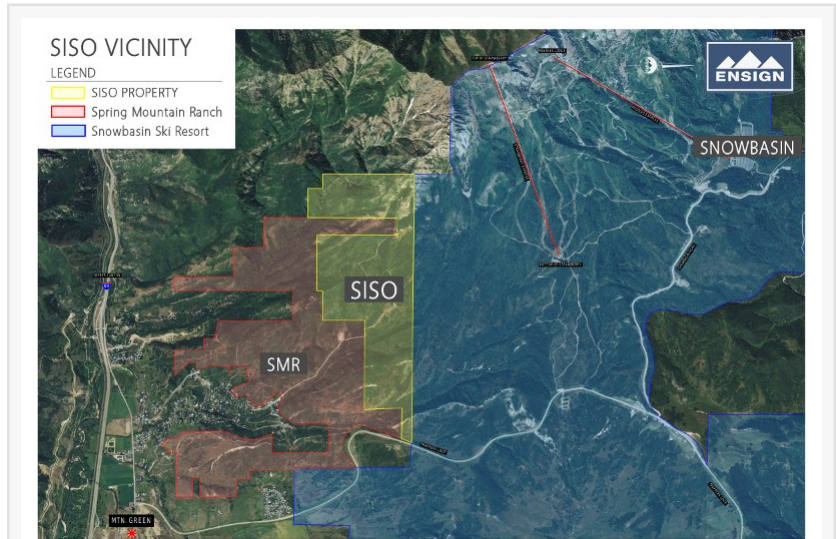
BORDERING the Snowbasin Resort is SISO - Ski In Ski Out -

<http://sisoutah.com/>. SISO has, among its other attractive features, pricing reminiscent of pre-2002 Olympic levels, well below comparable land available, offering buyers a virtually assured profitable exit.

Thanks to the vision of Mark Nelson and Kevin Fleury (Kevin Fleury, kevin@sisoutah.com), they, along with other investors have made a true arbitrage investment of 813 acres adjacent to the resort. This site, previously landlocked, and with limited basic services, has been sought after for

years. As the map below clearly shows, these acres are sandwiched between the existing resort and Spring Mountain Ranch, SMR.

On Purchase, these acres will be joined with SMR and enjoy the enhanced values of SMR's access, rights, and permits almost immediately. Land less than 1,000 yards away is selling today for \$149,000 per HALF-ACRE! The merger agreement between SISO and Spring Mountain Ranch brings SISO's 813 acres full services and substantially increases its value immediately.



SISO land borders Snowbasin from paek to base.



Just 35 minutes from SLC International Airport

- _ Bordering the resort and ski runs
- _ Thirty minutes to the SLCI airport
- _ Minutes from many local attractions
- _ Lowest priced land in the area
- _ Billion dollar development in progress next door
- _ Expert management team
- _ Location, location, location!!



Here's what you wind up with; Prime real estate in one of Utah's most desirable ski

areas slated for future residential and commercial development, a Billion dollar ski resort neighbor planned and approved within a short distance, instant equity and a secure partnership with a team of local experts and real estate professionals! contact kevin@sisoutah.com

In real estate, after location, timing is everything. You can still get in on this opportunity!!!

Patrick Kevin Fleury
SISO Utah, LLC
1 801 721 9603 (Mark) 44 7733122603 (Kevin)
email us here

This press release can be viewed online at: <http://www.einpresswire.com>

Disclaimer: If you have any questions regarding information in this press release please contact the company listed in the press release. Please do not contact EIN Presswire. We will be unable to assist you with your inquiry. EIN Presswire disclaims any content contained in these releases.

© 1995-2015 IPD Group, Inc. All Right Reserved.