

Mina Chang to Speak at the Global Oval Summit During Democratic National Convention

Conference organizers announced that CEO, Mina Chang of Linking the World has been chosen to speak at this year's Global Oval Summit, on the morning of July 26

PHILADELPHIA, PA, USA, July 25, 2016 / EINPresswire.com/ -- [Mina Chang](#), CEO of Linking the World, will speak to the relationship between extreme poverty, a lack of choices, and threats to our national security, a speech she also delivered during the Republican National Convention which has since been quoted by Margaret Doris for an article in Esquire Magazine.

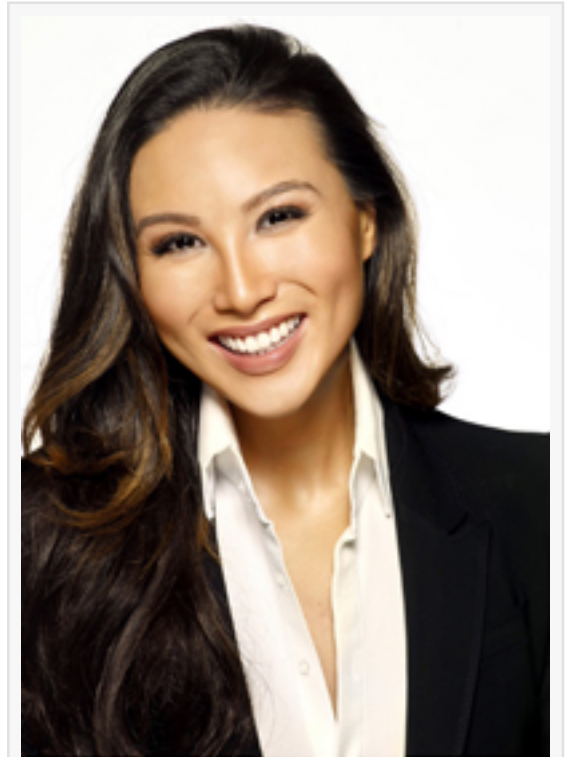
“Our work in conflict states such as Afghanistan, Iraq, Somalia, and Nigeria has shown that there’s a dangerous connection between extreme poverty and extremism,” says Chang. “Desperation born from extreme poverty enables the growth of groups that have become some of the most feared and violent in the world. Where there’s desperation there are opportunities to incite hatred, to negatively indoctrinate and to cultivate extremism in individuals who probably would not go that way if their circumstances were different, if there were other choices.”

Under Chang’s leadership, Linking the World has radically redesigned its humanitarian aid approach to leverage Big Data and locate vulnerable communities before they become desperate enough to accept the help of violent extremist groups like ISIS, Boko Haram, and Al Qaeda. “We believe that reactive, triage-based assistance has its place,” explains Chang, “but approaching potential humanitarian crises proactively not only helps lessen or halt the issues before they begin but builds stronger communities that are much more resistant to negative outside influences.”

The Global Oval Summit, organized at the Democratic Convention by ONE, the Better World Campaign, CARE and the U.S. Global Leadership Coalition is bringing together current and future U.S. leaders to participate in a series of conversations on the next President’s global development agenda, including emerging issues in global health, the refugee crisis, food security, energy access, girls and women, security, faith, and the UN’s Sustainable Development Goals.

Chang will advocate for increased collaboration between the Departments of State and Defense and USAID to address the growing concerns around highly fragile states and deliver dynamic humanitarian solutions that tackle the complex challenges of poverty.

The event is open to the public and on the record.



Mina Chang, CEO of Linking the World

Follow the conversation on Twitter: #GlobalOval and #ONEVote16

About Linking the World: Linking the World has over 20 years experience delivering dynamic humanitarian solutions that build resilient communities in areas of instability and conflict. For more information, visit www.linkingtheworld.org

About the Better World Campaign: The Better World Campaign (BWC), an initiative of the Better World Fund, works to strengthen the relationship between the United States and the United Nations. It encourages U.S. leadership to enhance the UN's ability to carry out its invaluable international work on behalf of peace, progress, freedom, and justice. For more information, visit www.betterworldcampaign.org.

Ian Dailey
Linking the World
214 412 0929
email us here

This press release can be viewed online at: <http://www.einpresswire.com>

Disclaimer: If you have any questions regarding information in this press release please contact the company listed in the press release. Please do not contact EIN Presswire. We will be unable to assist you with your inquiry. EIN Presswire disclaims any content contained in these releases.

© 1995-2016 IPD Group, Inc. All Right Reserved.