

# Mary Hart Is Seeing Stars

*Entertainment Tonight legend Mary Hart & husband Burt Sugarman are selling her extraordinary condo at the Ritz-Carlton Residences in Downtown Los Angeles.*

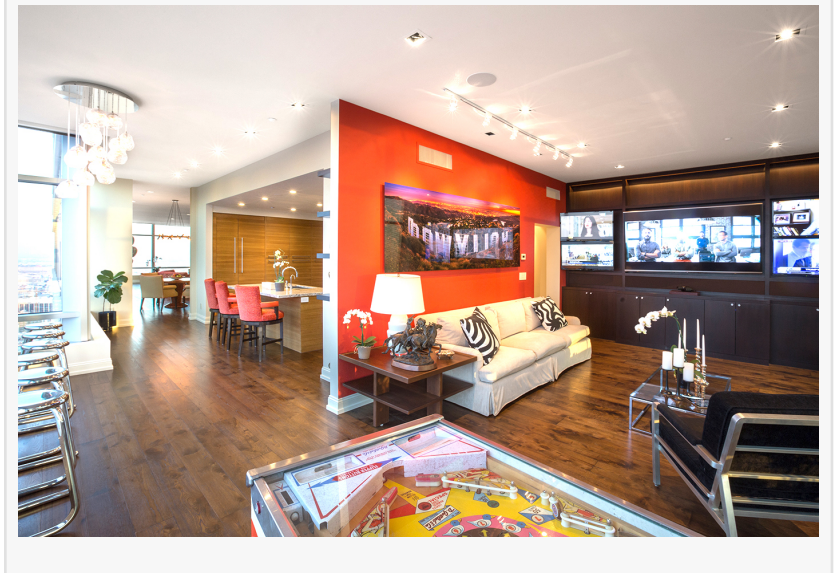
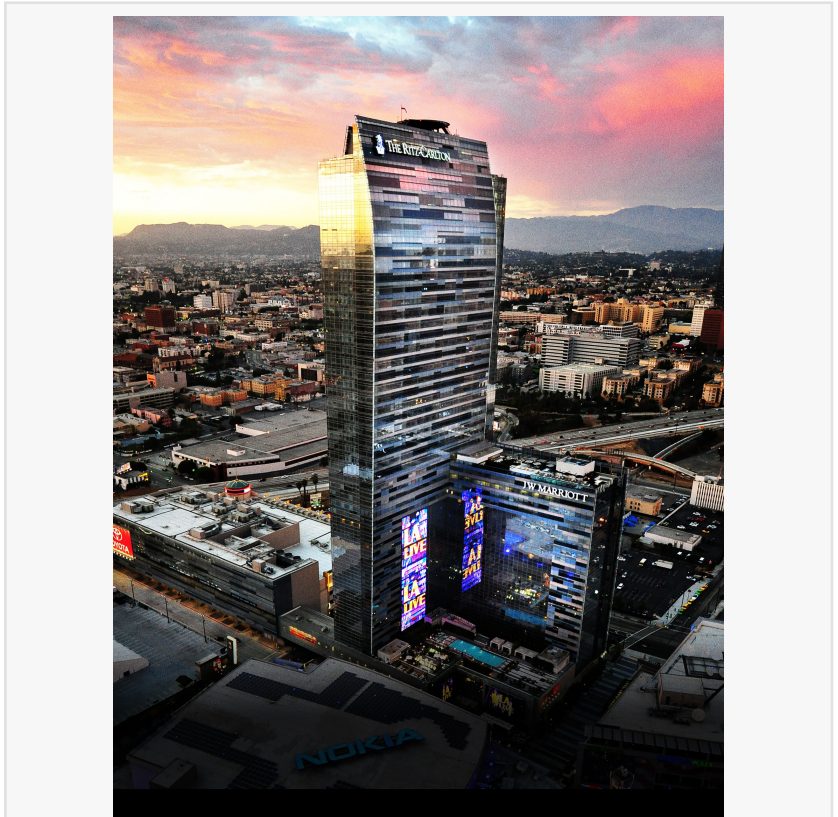
LOS ANGELES, CA, UNITED STATES,  
May 17, 2017 /EINPresswire.com/ --  
FOR IMMEDIATE RELEASE

## Mary Hart Is Seeing Stars!

Former Entertainment Tonight host Mary Hart has seen more stars in her lifetime than the Hubble telescope! At the recent Daytime Emmys Awards Gala in Pasadena, Hart was again orbiting with the luminaries when she was presented with a Lifetime Achievement Award for her ground-breaking career in daytime television.

"I am so overwhelmed and my heart is beating very hard," Hart said when accepting her statuette while also paying tribute to her mother, who'd passed away recently.

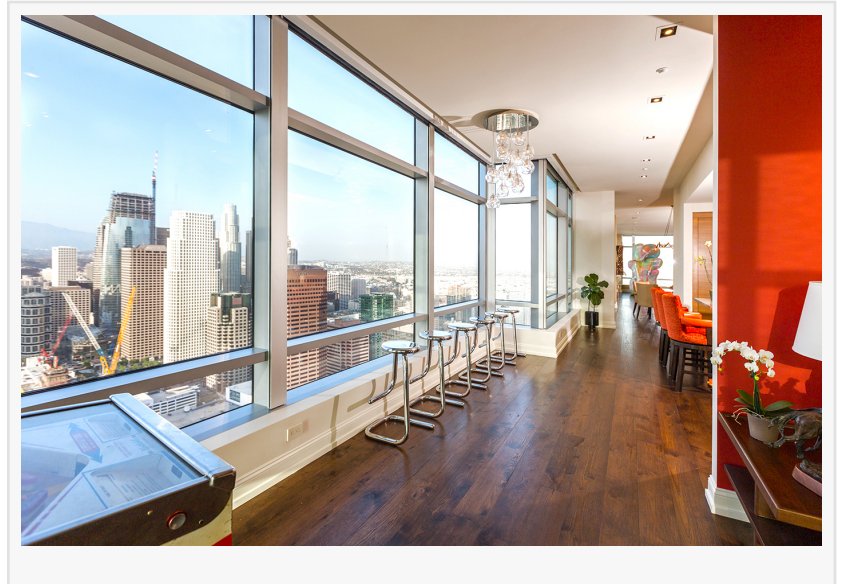
Hart and her husband, producer Burt Sugarman, know about star-gazing from the highest heights. For several years, they have been viewing the panoramic vistas of Los Angeles and the Hollywood sign from their incredible perch above LA LIVE at the Ritz-Carlton Residences. Recently, they shifted views to the Sierra Towers near Beverly Hills and listed their stellar 48G Ritz-Carlton Residence for sale.



With a newly affixed price-point of \$7.9 million, this one-of-a-kind condominium is among the top most exclusive condo listings in Los Angeles, according to the MLS. Unit 48G at the Ritz-Carlton Residences offers uncompromising views of downtown stretching all the way to the Pacific Ocean. Its high ceilings and advanced custom-lighting features make this 4,129-sq.-ft. residence ideal for displaying fine art, and its location puts residents in walking distance to LA LIVE, Staples Center, the

Microsoft Theater, and the Grammy Museum.

Built in 2010, the Ritz-Carlton Residences Unit 48G has been newly customized to suit five-star luxury living. The home features three en-suite bedrooms, a guest powder room, a family media room with five TVs, a chef's kitchen with premium Gaggenau built-in appliances, granite countertops and cabinetry, adjoining pantry, a fully equipped laundry room, and gracious open-concept living spaces.



The master-bedroom appointments include automatic-bypass entry doors, a built-in king-sized bed foundation and nightstands, a makeup vanity, an armoire unit with a charger station for electronic devices, a handcrafted TV lift-cabinet, separate spacious his/her walk-in wardrobes with LED lighting systems throughout, and electronic blackout window shades. The master bath is lushly finished with a self-cleaning whirlpool tub, designer fixtures and storage amenities. A technologically advanced Crestron Control System allows for streamlined management of every facet of the residence's electronic operation — illumination, gallery-style fine-art lighting, window shades, TVs, AV and HVAC — from an iPhone or iPad. Finely crafted and darkly stained 5-inch oak-plank hardwood floors and luxuriant carpeting accentuate each room in which no bespoke detailing have been overlooked.

Listing agent, Alex LiMandri, said, "Mary Hart and Burt Sugarman know about stars. And they created the perfect home for people who like to view them high above one of the most exciting neighborhoods in Los Angeles." LiMandri is a partner at DTLA LIFE — a noted real estate and lifestyle company on the downtown scene. He is the listing agent who garnered DTLA's highest price-per-square-foot when he sold Ritz-Carlton Residence Unit 47G for \$6.7 million or \$1,576.50 per square foot.

For more information about this opportunity, contact:

Alex LiMandri  
DTLA LIFE  
CalBRE #01822666  
alex@dtlalife.com  
213.447.4080

Alexandre LiMandri  
DTLA LIFE  
2134474080  
email us here

---

This press release can be viewed online at: <http://www.einpresswire.com>

Disclaimer: If you have any questions regarding information in this press release please contact the company listed in the press release. Please do not contact EIN Presswire. We will be unable to assist you with your inquiry. EIN Presswire disclaims any content contained in these releases.

© 1995-2017 IPD Group, Inc. All Right Reserved.