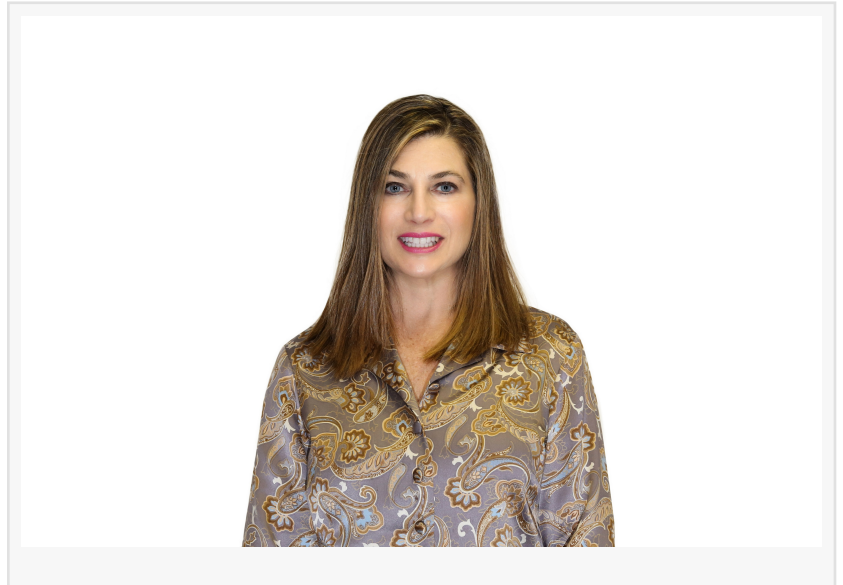


Laffey Real Estate Names Allison Platt Branch Manager, Port Washington

Newest Appointee to the Management Team

GREENVALE, NEW YORK, UNITED STATES, October 11, 2017 /EINPresswire.com/ -- [Laffey Real Estate](#), Long Island's premier family owned residential real estate brokerage, is pleased to announce the promotion of [Allison Platt](#) to the management role at their Port Washington Office. The announcement was made jointly by principals, Mark T. Laffey and Philip C. Laffey, the Broker-Owners of the 40 year old firm.



Allison is proud to be assuming the role of Branch Manager of the Laffey Real Estate Port Washington office. As a Port Washington resident, the married, mother of 2 children in the Port Washington School Districts, brings an incredible depth of knowledge, experience, and expertise to the Port Washington office.

“

Ms. Platt is part of the new generation of residential realtors. Her command of social media, technology and marketing concepts sets a commendable example to agents.”

Kathleen M. Christie/Branch Manager

Platt is taking over for Kathleen Christie, the driving force behind the branch's historic success. After almost 17 years, Kathleen is stepping down from the management role but will remain an active realtor in the Port Washington community. “Ms. Platt is part of the new generation of residential realtors in the industry. Her command of social media, technology and marketing concepts sets a commendable example to agents while effectively using traditional means of personal service and communications”, Christie explains.

Allison has been a working professional in Long Island Real Estate for over 20 years. She is a member of the LI Realtors Board, a licensed Real Estate Broker, a Training Manager for

Laffey Real Estate, and an invaluable resource to countless professionals working in Real Estate on Long Island.

Allison is not only a consummate professional, but also an avid fan of music, art, literature, yoga, bicycling, and beautiful Port Washington sunsets.

About Laffey Real Estate

Laffey Real Estate is one of the largest privately held independent family-owned residential real estate

firms on Long Island with a network of over 400 agents in 13 offices throughout Nassau, Western Suffolk and Queens Counties. Their global partnership with Leading Real Estate Companies of the World and Luxury Portfolio, extends their reach to more than 50 countries worldwide. The firm is a full-service provider offering expertise in sales, rentals, relocation, mortgage, developments and title insurance to the marketplace. The cutting-edge technology supporting field agents, premium brand identity and industry-leading tools embody best in class standards. Consumers trust in the Laffey Real Estate name to provide tools and resources that help navigate the process of buying and selling residential real estate in any economic environment. Consistently ranked in the top 10% of the brokers locally and as a Top 500 Broker in the US based on the 2016 Real Trends reports, Laffey Real Estate has an exceptional record of success.

Media Contact: Cathy M. Poturny Laffey Real Estate 516.626.1500 x390 cpoturny@laffeyre.com

Cathy M Poturny
Laffey Real Estate
5166261500
[email us here](#)

This press release can be viewed online at: <http://www.einpresswire.com>

Disclaimer: If you have any questions regarding information in this press release please contact the company listed in the press release. Please do not contact EIN Presswire. We will be unable to assist you with your inquiry. EIN Presswire disclaims any content contained in these releases.

© 1995-2018 IPD Group, Inc. All Right Reserved.