

Food Production Companies Choose the LOBO System to Increase Safety & Reduce Cost.

Increasing Safety and Reducing Cost Food processing machines are difficult to access for maintenance and cleaning tasks.

DERBY, DERBYSHIRE, UNITED KINGDOM, June 27, 2018 /EINPresswire.com/ -- PepsiCo, Anheuser-Busch, Tyson, Heinz, Kraft, Kelloggs, Unilever, Nestle, Cargill, Heineken, Cott Beverages, Coca-Cola, Miller Coors, 2 Sisters Food Group, Allied Mills, William Grant, Pernod Ricard, Britvic, Muller Dairies, McCain, ADM, Dairy Crest, Bunge and Arla Foods, all use the [LOBO System](#) for facility [maintenance](#); and here's why:

Maintenance:

Food processing machines are difficult to access for maintenance and cleaning tasks. Traditional scaffolding and aluminium tower systems could be used, but as they cannot be quickly or easily assembled and are not tailored to fit each individual application, they cannot be deployed from one machine to another. They do not meet the industry's day to day changing requirements. Outsourced scaffolding labour is expensive and not available 24 x 7, aluminium frame systems are cumbersome, inflexible and will not adjust to fit into awkward areas.

When not in use, they take up a lot of space and cannot be easily transported around the production facility.



Speed, strength and flexibility in countless

(re)configurations... elevated work done safely, and easily"

Rob Brauch : Principal at Occupational Health and Safety Solutions

Regular access to elevated areas, for example above conveyors, is awkward and difficult to reach. Safety is a key component of working at height which cannot be compromised.

The Solution

The LOBO System is a re-configurable work platform product that combines the flexibility and strength of traditional scaffolding with the simplicity and mobility of tower systems. This combination provides a versatile access system that has applications right across the Food Industry.

The LOBO System, utilising its unique patented clamp, can be reconfigured and adjusted, without the need for tools, into any shape or size required. This simple system can be assembled by anyone, as the components are modular. LOBO's electroplated steel legs and components can be flat packed when not in use and transported easily, for storage or utilisation elsewhere.



Awkward Access made easy

Your own in-house maintenance crews can assemble the LOBO System quickly, easily and safely around, under or above machinery or conveyors. To ensure safety, handrails can be fitted in seconds, at any point in the system, and at any stage of the assembly process. Staff should never be exposed to the risk of a fall.

This means out-sourced scaffolding labour costs can be reduced without comprising safety. Areas, previously considered difficult to get to, can now be accessed with ease for maintenance and cleaning purposes. As it is available 24/7 it puts you in control of what and when you schedule your maintenance tasks.

Product Benefits

LOBO is scalable, adaptable and adjustable to meet your ongoing and changing requirements. Simply add more components or alter your existing configuration to satisfy the demands of the next task. Protect your initial investment with a product that will meet all your access needs safely.

LOBO is a rigid and stable product, which meets or exceeds current safety regulations.

LOBO's electroplated steel structure ensures many years of product life and a system that will not shake or rattle.

LOBO's modular approach means components fully integrate and can be hand carried.

Fully constructed systems can also be made mobile by the addition of wheels.

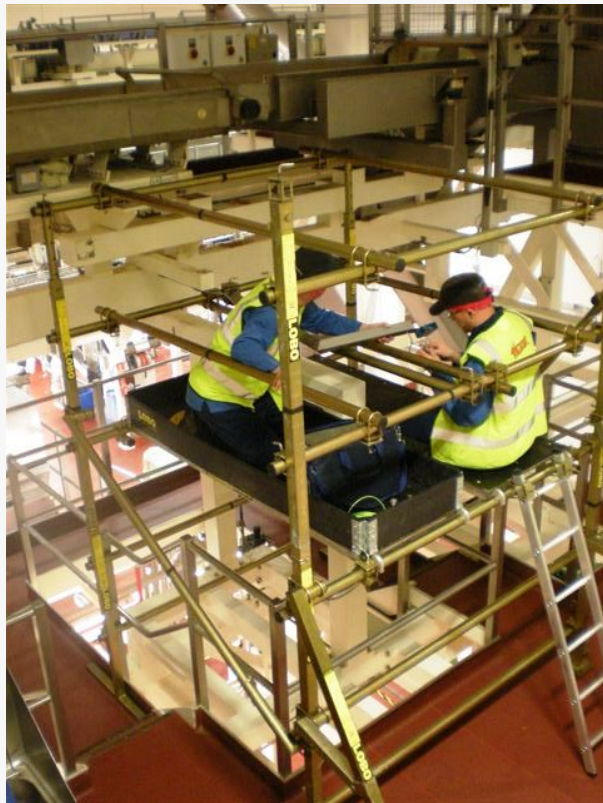
[LOBO Towerstore](#)

The Towerstore offers security on or off site. The Towerstore provides a secure and yet simple way to store your LOBO components, which also makes managing all the components parts that much simpler.

Designed specifically for LOBO's advanced work platform system, it is fitted with feet for easy pallet truck or fork lift manoeuvrability. Also, it can be locked with a padlock for security or storage. The Towerstore can be vertically or horizontally mounted to suit the workshop or can be transported for



Awkward Access made easy



Awkward Access made easy

rapid deployment, on and off site.

Cost Benefits

Experience shows that deploying the LOBO system reduces the costs associated with hiring scaffolding and constructing bespoke fixed access systems. By reducing your reliance on out-sourced scaffolding and engineering companies, cost savings will be achieved – easily within a 12-month period.

With this quantifiable reduction in costs comes the added savings associated with reduced down-time and greater productivity from your maintenance department.

Available 24/7, quick to erect, and above all safe.

It is immediately adjustable for your next job with no staff waiting time while new fixed-frame structures are built.

Re-configurable, again and again, this product comes with no disposal costs and minimal replacement and on-going training costs.

Why Choose LOBO?

Safe | Available 24/7 | Re-configurable | No-tools assembly | Protects Investment | Reduces cost | Scalable

Robert Bokros
LOBO Systems Ltd
+44 (0) 1332 365666
email us here

This press release can be viewed online at: <http://www.einpresswire.com>

Disclaimer: If you have any questions regarding information in this press release please contact the company listed in the press release. Please do not contact EIN Presswire. We will be unable to assist you with your inquiry. EIN Presswire disclaims any content contained in these releases.

© 1995-2018 IPD Group, Inc. All Right Reserved.