

CCP launches Shipment Monitoring solution

MELBOURNE, VICTORIA, AUSTRALIA, August 27, 2018 /EINPresswire.com/ -- CCP Technologies Limited ("CCP" or "The Company") is pleased to announce that it has launched its shipment monitoring Smart Tag to meet critical control point monitoring requirements in transport and logistics environments.

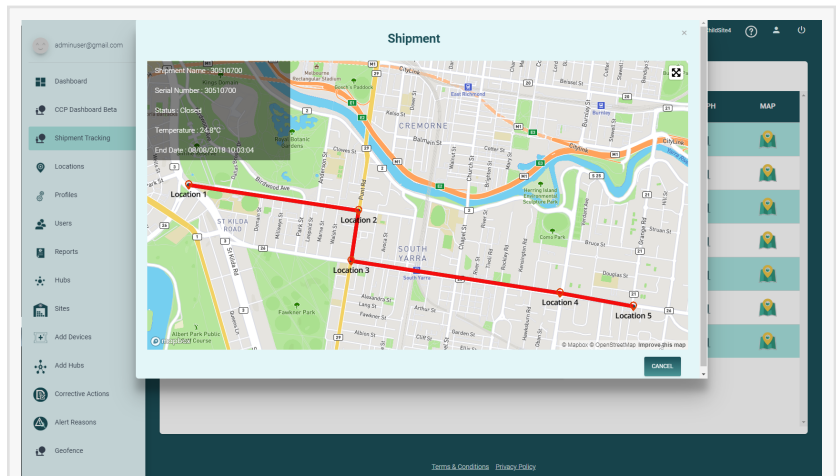
Since temperature is the most critical environmental parameter affecting the perishable food supply chain, it is commonly referred to as the "cold chain". All cold chain stakeholders have a requirement for temperature monitoring to comply with food safety legislation and regulations.

When it comes to shipment monitoring, the global market is currently dominated by passive data loggers. Data loggers are typically connected to a PC to download temperature data at the end of the journey; however, these do not provide a real-time preventative management tool. The CCP shipment monitoring solution is a novel multi-path connectivity approach which leverages diverse LPWAN, NFC and other communication systems to deliver flexibility. By providing easy access to data at any point along the supply chain, our solution is designed to enable customers to prevent failures before they occur.

When perishable products are shipped, temperature control is critical. If a temperature breach occurs at any point along the supply chain, product quality can be irreparably impacted. Shipments valued in the millions can be lost or delayed as breaches are investigated, which results in supply interruptions, negative customer impact and risk to product safety.

Michael White, Chief Executive Officer of CCP said,

"CCP now offers end-to-end IoT-based monitoring solutions from farm to fork. The market for



our shipment monitoring solution is massive. We estimate the total available market size in Australia and the US for shipment monitoring is 450 million monitoring points. It's terrific to see our tags being successfully used now in a variety of domestic and export shipment environments."

The Company's first installation of its shipment monitoring solution is with a national food distributor who is conducting a trial. Smart Tags were installed in refrigerated trucks and setup to report each driver's shift. CCP Smart Tags are "tapped" with a mobile phone to activate, configure, capture temperature and GPS location data and set way-points. Once activated, these tags automatically captured temperatures and locations so that the data can be presented in map, graph or report formats on CCP's platform. Data is available in real-time and include notifications for any out of tolerance events. Geo-fencing features strengthen the shipment monitoring value proposition.

Michael White, Chief Executive Officer of CCP said,

"Globally, food companies are looking to use Blockchain to improve their ability to through-chain monitor the temperature conditions of perishable foods to ensure quality control and extend shelf life. Our shipment monitoring customers will be able to enter into smart contracts which are supported by business rules for product monitoring, breach alerts, product acceptance and product payment. Our new shipment smart tag complements our Blockchain initiatives."

About CCP

CCP Technologies – a listed public company on the Australian Securities Exchange – offers a critical control point management system in Australia and North America and has an emerging presence in Singapore. Critical control points are the points in a supply chain where a failure of standard operating procedure has potential to cause serious harm to people – and to a business' reputation and bottom line. Standard critical control points include temperature, energy, environment (e.g. air and water quality, pH, chemicals, noise, acoustics and gases) and movement.

CCP captures data using Smart Tags (sensors) and an advanced Internet of Things (IoT) network which leverages WiFi and various LPWAN connectivity solutions. Data is delivered to the company's big data cloud platform where it is analysed to deliver business intelligence. Customers access this information through Web and Mobile Dashboards; and receive real-time alerts via SMS, email and push notifications.

The Company's first target market is the food industry, where food safety regulation, energy savings and waste reduction drives adoption. The company has announced its appliance-level energy (power) monitoring solution for release in 2018.

Michael White | Executive Director & CEO
CCP Technologies
+61 (0) 412 799 232
[email us here](#)



LPWAN edge computing IoT smart tags

This press release can be viewed online at: <http://www.einpresswire.com>

Disclaimer: If you have any questions regarding information in this press release please contact the company listed in the press release. Please do not contact EIN Presswire. We will be unable to assist you with your inquiry. EIN Presswire disclaims any content contained in these releases. © 1995-2018 IPD Group, Inc. All Right Reserved.