

Nye & Company's September 25 Estate Treasures Auction will feature a broad and diverse group of fine and decorative arts

The sale will featuring property from the Westervelt Corporation, the NAMITS Collection and several private collections out of Long Island, New York.

BLOOMFIELD, N.J., UNITED STATES, September 14, 2018 / EINPresswire.com/ -- BLOOMFIELD, N.J. – Nye & Company Auctioneers' Estate Treasures Sale on Tuesday, Sept. 25th, will showcase a broad and diverse group of fine and decorative arts, featuring property from the Westervelt Corporation, the NAMITS Collection and several private collections from Long Island. The auction will be held online and in Nye's gallery, at 20 Beach Street in Bloomfield.

"The sale includes a nice group of maritime art comprised of paintings, models and instruments," said Andrew Holter of Nye & Company Auctioneers, adding, "There is also a fine selection of garden statuary, which will delight even the most seasoned landscape enthusiast. Collectors, trade and institutions alike should be pleased with the depth and breadth of these fine offerings."

“

The sale includes a nice group of maritime art comprising paintings, models and instruments. There's also a fine selection of garden statuary, which will delight even a seasoned landscape enthusiast."

Andrew Holter

In all, 600 total lots will come up for bid, starting promptly at 10 am Eastern time. For those unable to attend in person, internet bidding will be facilitated by LiveAuctioneers.com and Invaluable.com. People can bid in person, over the phone, in absentia and online. Previews will be held weekdays, from 10-4 Eastern, as well as on Sunday, September 23rd, from noon to 4 pm.

A pair of limestone figural groups, one signed by H. (Henri Leon) Greber (Fl., 19th/20th c) and, according to tradition, commissioned in 1905 by the landscape architects Guy

Lowell and Charles Singer Sargeant for the 500-acre garden of Harbor Hill, an estate home in Roslyn, Long Island, should bring \$8,000-\$12,000. The home was designed by Stanford White for Clarence Hungerford Mackay, a Wall Street financier. The figures are 41 inches tall and 57 inches wide.

An Italian carved marble well head, circa the 19th century, 37 inches tall by 30 inches wide, has an estimate of \$7,000-\$10,000. Also, a [Tiffany Studios](http://TiffanyStudios.com) cast bronze crab inkwell with an oyster



Pair of limestone figural groups, one signed by H. (Henri Leon) Greber (Fl., 19th/20th c.) (est. \$8,000-\$12,000).

shell lid, stamped and numbered and showing an early Tiffany company logo, is expected to command \$5,000-\$10,000; and a late 19th century American cast-iron architectural element depicting Diana the Huntress, on a later stand, 28 ½ inches tall, should sell for \$1,500-\$3,000.

The maritime art will feature a late 19th or early 20th century American cased diorama of a shipyard, 5 feet 5 inches long and 19 ½ inches wide (\$3,000-\$5,000); a carved maple figural sculpture of three sailors, by Adlai S. Hardin (1901-1989), 37 inches tall by 45 inches wide (est. \$1,500-\$3,000); and a late 19th or early 20th century cased hull model of the Scottish ship Dechmont, mounted on a metal stand, 54 inches tall by 79 ¾ inches wide (est. \$2,000-\$4,000).

Maritime art of the two-dimensional variety will feature an oil on canvas painting attributed to [Samuel Walters](#) (British, 1811-1882), titled *Mary Moore*, measuring 33 ½ inches by 51 ½ inches (est. \$1,500-\$3,000). Walters was one of the brightest lights of the Liverpool School of marine art. He excelled in all facets of marine painting, but was most accomplished in ship portraiture.

A highly detailed 19th century model of an Asian man selling baskets, with additional baskets and displays, 24 ½ inches tall by 26 ½ inches wide (est. \$300-\$500); while an artist proof lithograph of [Liz Taylor](#) by Sylvia Robert, mounted with crystals and signed and numbered ("Robert / D&D / 3/50") on verso, measuring 38 ½ inches by 27 ½ inches (est. \$400-\$600).

The furniture category will be led by a mid-18th century English George II mahogany wall cabinet in two parts, having upper drawers fitted with cutlery dividers, 6 feet 8 inches tall by (est. \$1,500-\$3,000); a late 20th century American walnut platform bed with inset grass Tatami mats, attributed to Mira Nakashima, 6 feet in width by 7 feet 5 inches in length (est. \$1,000-\$2,000); and a late 18th century French or Italian Neoclassical parquetry commode (est. \$3,000-\$5,000).

John Nye had a long and fruitful career at Sotheby's before he and his wife, Kathleen, acquired Dawson's in 2003 and started Dawson & Nye. With the move to Bloomfield seven years later, they renamed the business to Nye & Company (Auctioneers, Appraisers, Antiques). The firm is



Oil on canvas attributed to Samuel Walters (British, 1811-1882), titled *Mary Moore* (est. \$1,500-\$3,000).



Mid-18th century English George II mahogany wall cabinet in two parts, 6 feet 8 inches tall (est. \$1,500-\$3,000).

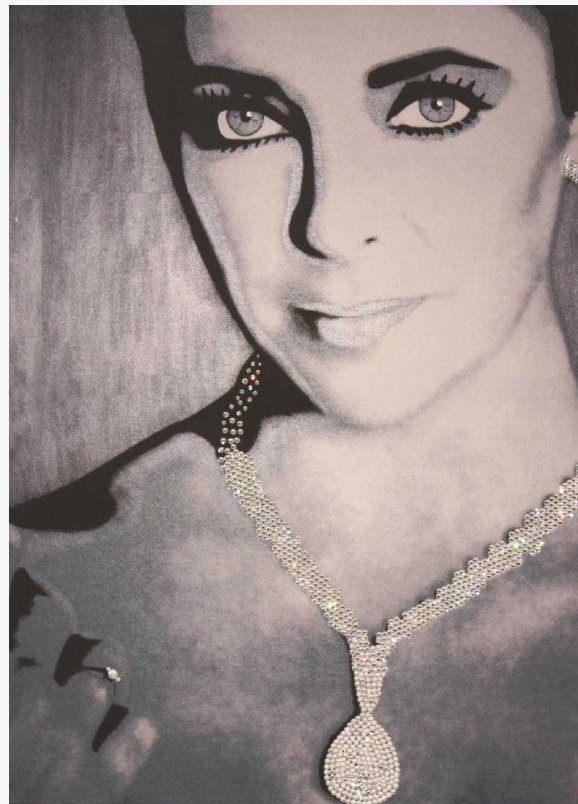
nationwide, but the vast bulk of the business comes from trusts and estates in the tri-state area. For more information about Nye & Company Auctioneers and the upcoming auction slated for September 25th, please visit www.nyeandcompany.com. The full color catalog is available for viewing at www.nyeandcompany.com, www.LiveAuctioneers.com and www.Invaluable.com.

#

John Nye
Nye & Company Auctioneers
(973) 984-6900
email us here



Tiffany Studios cast bronze crab inkwell with an oyster shell lid, stamped and numbered (est. \$5,000-\$10,000).



Artist proof lithograph of Liz Taylor by Sylvia Robert, mounted with crystals, signed and numbered (est. \$400-\$600).

This press release can be viewed online at: <http://www.einpresswire.com>

Disclaimer: If you have any questions regarding information in this press release please contact the company listed in the press release. Please do not contact EIN Presswire. We will be unable to assist you with your inquiry. EIN Presswire disclaims any content contained in these releases. © 1995-2018 IPD Group, Inc. All Right Reserved.