

Artworks attributed to Gauguin, Bierstadt, Benton will headline Woodshed Art Auctions' Thursday, October 18th auction

They're just a few of the expected highlights in Woodshed's 184-lot Fine Art Drawings, Cartoons & Studies auction, online and at 500 Gallery in Franklin, Mass.

FRANKLIN, MA, UNITED STATES, October 5, 2018 /EINPresswire.com/ -- FRANKLIN, Mass. –

“

We have works by Picasso, Bierstadt and Tim Burton from one collection and souvenir drawings by Miro, Peter Max and Dr. Seuss from another one, plus a drawing by Wifredo Lam and a study by Monet.”

Bruce Wood

Artworks attributed to [Paul Gauguin](#) (Fr., 1848-1903), [Albert Bierstadt](#) (Am., 1830-1902) and [Thomas Hart Benton](#) (Am., 1889-1902) are just a few of the expected highlights in Woodshed Art Auctions' 184-lot Fine Art Drawings, Cartoons & Studies auction on Thursday, October 18th, online and live in 500 Gallery, at 475 Franklin Village Drive in Franklin.

Live bidding will begin promptly at 5:30 pm Eastern time. People can register and bid now, at www.woodshedartauctions.com. Previews will be held at 500 Gallery starting on October 10th.

The auction will feature a selection of works on paper, including drawings and studies by Impressionist, Pop and Modern master artists, along with casual sketches and souvenir drawings, illustrations and cartoons by major names in pop culture and comics – for a total of 184 lots.

“It has become obvious that some of our consignors have a deep interest in drawings,” said Bruce Wood, the owner of Woodshed Art Auctions. “We have works by Picasso, Bierstadt and Tim Burton coming from one collection, and souvenir drawings from Miro, Peter Max and Dr. Seuss coming from another one. Add to that master drawings by Wifredo Lam and studies by Benton, Gauguin and Claude Monet, and people will see that a very lively show has emerged.”

The works attributed to Gauguin and Benton both carry estimates of \$75,000-\$100,000. The ink and pencil drawing on paper done in the manner of Gauguin, titled Taaroa (circa 1891), 4 ¼ inches by 6 ½ inches unframed, appears to be part of a set that was partially sold at Sotheby's on May 8, 2013. Near infra-red (NIR) spectrometry confirms that the paper used is from the 1890s.

The oil on paper board attributed to Benton, titled Portrait of a Boy, is signed bottom right and unframed. There's an unidentified marking verso. Benton was one of America's preeminent pre-war regionalist painters. The oil on paper attributed to Bierstadt is titled Butterfly. It's 8 inches by 9 ½ inches unframed. Bierstadt, perhaps the best 19th century American landscape painter, was also known for making butterfly paintings as souvenirs for the female guests at his soirees.

Works by noted French artists are always in demand. A gouache on paper attributed to Fernand Leger (1881-1955), titled Female Faces, previously in collections in England and Chile, has an estimate of \$20,000-\$30,000; while a pastel on paper attributed to Edouard Vuillard (1868-1940) titled Tree Scene, signed and in a 13 ¾ inch by 12 ¾ inch frame, should bring \$12,000-\$16,000.

If Disney's your thing, the auction features a watercolor and ink on paper drawing of Mickey and Minnie Mouse attributed to Floyd Gottfredson (Am., 1905-1986), who drew the Mickey Mouse comic strip for Walt Disney Productions, 1930-1975 (est. \$25,000-\$35,000); and a watercolor on paper depiction of Donald Duck attributed to Charles Alfred Taliaferro (Am., 1905-1969), a comic artist who produced Disney comic strips for King Features Syndicate (est. \$4,000-\$8,000).

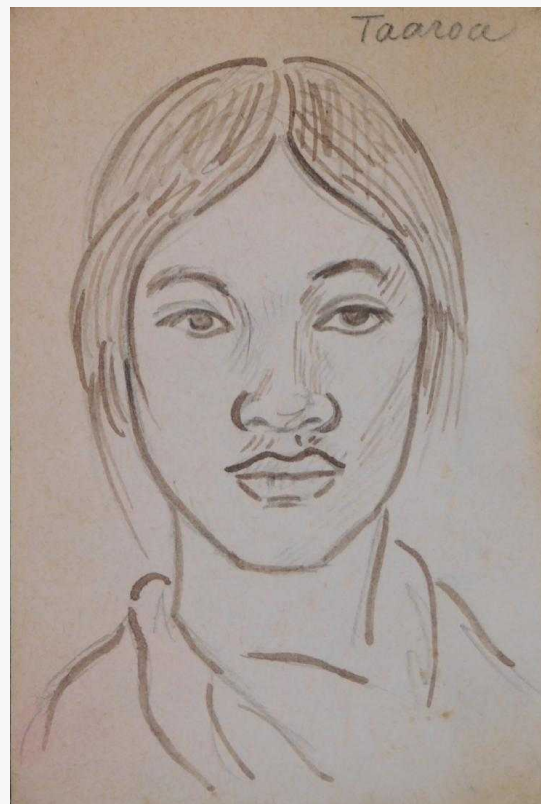
Looking to add a splash of color and whimsy to your surroundings? Consider the pen and ink on paper drawing attributed to the Belgian artist known as Herge (1907-1983), creator of the Tintin comic series, titled *Rocket*, signed and dated 1954 (est. \$18,000-\$25,000); or the colored pencil and marker on paper depiction of Richard Nixon by the legendary Pop artist Peter Max (German-Am., b. 1937), signed and dated 1998 and 8 inches by 6 inches unframed (est. \$2,000-\$4,000).

An ink on paper drawing of Fritz the Cat and his girlfriend engaged in foreplay on a couch, attributed to counterculture cartoonist Robert Crumb (Am., b. 1943), 11 inches by 12 ½ inches unframed, should realize \$16,000-\$20,000. Also, an oil on Fabriano paper drawing attributed to Bob Kane (Am., 1915-1998), the co-creator of Batman, titled *Batman and Robin*, showing the Dynamic Duo, signed, 16 ½ inches by 17 ½ inches unframed, has an estimate of \$5,000-\$8,000.

Coincidentally, there's another drawing of Batman and Robin in the sale. It's attributed to movie maker and artist Tim Burton (Am., b. 1958). Done using graphite and colored pencils and ink on white drawing paper, the 12 inch by 11 inch work should fetch \$8,000-\$12,000. Also attributed to Burton is a pencil and pastel on paper titled *Red Queen*, signed verso (est. \$10,000-\$12,000).

Another master of the macabre is also represented in the sale. He's Charles Addams (Am., 1912-1988), longtime cartoonist for the *New Yorker* magazine and inspiration for TV's *The Addams Family*. Drawings attributed to him include his iconic characters Morticia and Lurch, the former ink and watercolor on cardstock, the latter marker and watercolor on paper (est. \$3,000-\$4,000).

Returning to art of a more serious vein, an ink pen and watercolor on paper attributed to Lyonel Feininger (German-Am., 1871-1956), titled *Sail Boat*, signed and dated and 9 inches by 10 ½ inches



Ink and pencil drawing on paper done in the manner of Paul Gauguin, titled *Taaroa* (est. \$75,000-\$100,000).



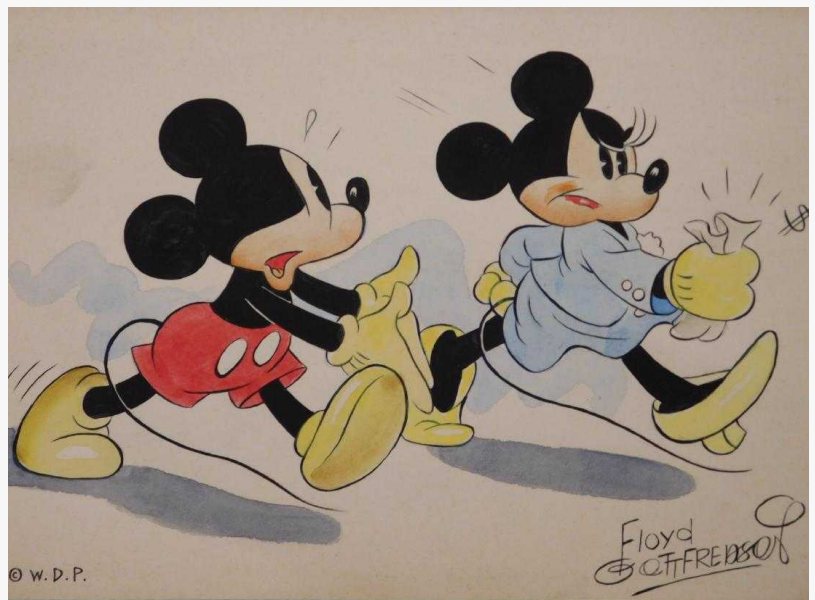
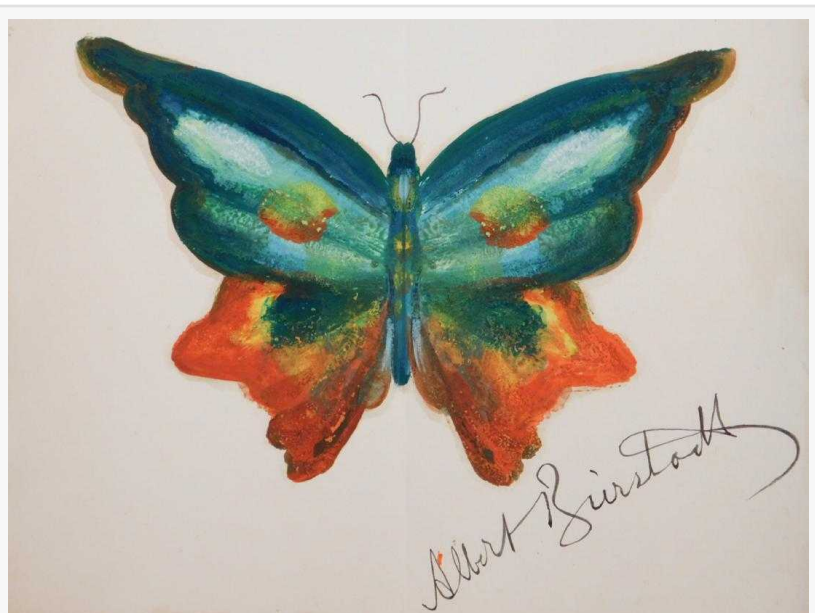
Oil on board attributed to Thomas Hart Benton, titled *Portrait of a Boy* (est. \$75,000-\$100,000).

unframed, is expected to reach \$15,000-\$20,000; while a pencil on paper Portrait of a Woman attributed to Edward Coley Burne-Jones (Br., 1833-1898), should hit \$10,000-\$15,000.

Who's more famous, Andy Warhol or Pablo Picasso? Answer: both. An ink drawing on paper attributed to Warhol (Am., 1928-1987), titled Gold Evening Shoe, signed and unframed, carries an estimate of \$10,000-\$15,000; and a signed and dated crayon on paper attributed to Picasso (Sp., 1881-1973) titled Face of a Woman, in a 17-inch square frame, should hit \$10,000-\$12,000.

An India ink drawing on buff-colored paper attributed to the renowned Cuban artist Wifredo Lam (1902-1982), titled Surreal Figures Drawing, signed and 11 inches by 15 inches unframed, is expected to rise to \$7,000-\$10,000. Also, a pastel on paper attributed to French painter Edgar Degas (1834-1917), titled Dancer, signed, framed and artist stamped, should hit \$6,000-\$8,000.

An ink on paper by the Italian comic book creator Hugo Pratt (1927-1995), titled Corto Maltese, signed, 5 ½ inches by 8 ¾ inches, unframed, has an estimate of \$8,000-\$12,000; and an ink on paper Sketch of Woman and Horse attributed to Alberto Giacometti (Swiss, 1901-1966), signed and dated 1957, with the Galerie Mathias Fels gallery stamp verso, should garner \$5,000-\$7,500.



Watercolor and ink on paper drawing of Micky and Minnie Mouse, attributed to Floyd Gottfredson (est. \$25,000-\$35,000).

Woodshed Art Auctions is a family-owned art gallery specializing in oil painting restoration and live and online art auctions, celebrating its 50th anniversary. The firm is always accepting quality artworks for future auctions. To inquire about consigning a single piece or an entire collection, you may call Bruce Wood at 508-533-6277; or, e-mail him at bruce@woodshedartauctions.com.

For more about Woodshed Art Auctions and the 184-lot Fine Art Drawings, Cartoons & Studies auction scheduled for Thursday, October the 18th, please visit www.woodshedartauctions.com.

#

Bruce Wood
Woodshed Art Auctions
(508) 533-6277
[email us here](#)



Pen and ink on paper drawing attributed to the Belgian artist known as Hergé (est. \$18,000-\$25,000).

This press release can be viewed online at: <http://www.einpresswire.com>

Disclaimer: If you have any questions regarding information in this press release please contact the company listed in the press release. Please do not contact EIN Presswire. We will be unable to assist you with your inquiry. EIN Presswire disclaims any content contained in these releases. © 1995-2018 IPD Group, Inc. All Right Reserved.