



Swan Island Networks Announces New TX360 Seasonal Risk Services

TX360 Seasonal Risk services provide highly focused, premium coverage for seasonal natural disasters such as hurricanes and wildfires.

PORTLAND, OR, 97239, June 11, 2019 /EINPresswire.com/ -- [Swan Island Networks](#), creators of the TX360 real-time situational awareness platform deployed on the Microsoft Azure Cloud, announces new [TX360 Seasonal Risk](#) services, available for rapid deployment during hurricane and wildfire season.

In the last few years, the United States has faced multiple devastating hurricanes, record-breaking wildfires, and severe weather events that have disrupted business operations for many companies. This trend is expected to continue, with the Southeast region of the US under high threat of hurricane damage this season, from June to November.



We are expanding our TX360 service offerings to help clients navigate these increasing seasonal and weather-related risks."

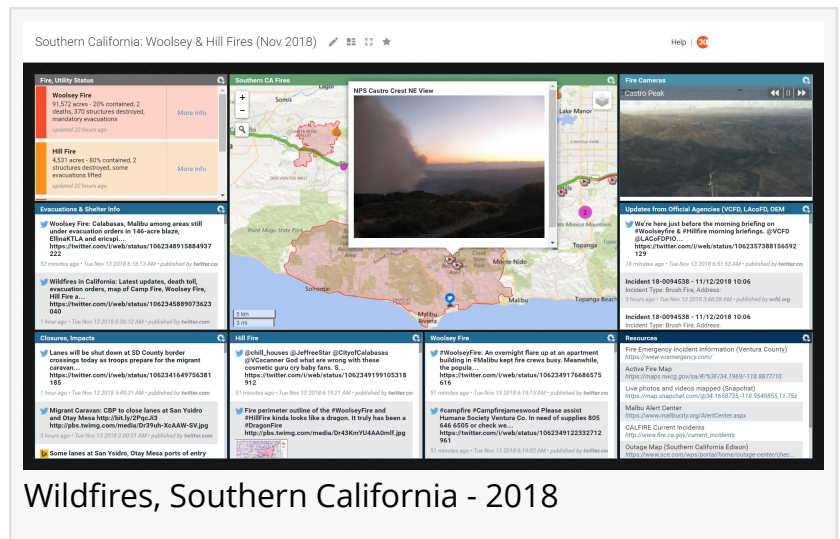
*Juli Morse, Vice President,
Swan Island Networks*

Offered to new subscribers, TX360 Seasonal Risk services provide highly focused coverage for seasonal natural disasters such as hurricanes and wildfires. The service offers premium, analyst-curated content, delivered via 24/7 real-time dashboards. The service is intended to provide coverage for major events and disasters across North America, as well as TX360 Smart Alerts delivered via email.

"Businesses are facing a new reality due to severe hurricane and wildfire threats, especially in the Southeast and Western regions of the US," said Juli Morse, Vice President of Customer Success, Swan Island Networks. "We are expanding our TX360 service offerings to help clients navigate these increasing seasonal and weather-related risks."

Short-term subscription options are available, enabling new clients to onboard easily. Starting in June 2019, clients can select from 3- and 6-month license options, for the TX360 Seasonal Risk service or the more customized TX360 Corporate Basic package.

"For several years, the TX360 real-time situational awareness platform has been providing our [Global Security Operations Centers](#) and our clients with impressive real-time coverage during hurricane season," said Sherman Brawner, General Manager, Allied Universal® Technology Services. "TX360 Seasonal Risk services will allow more of our clients to access this valuable technology and better protect the interests of their organizations during these increasingly high-risk events."

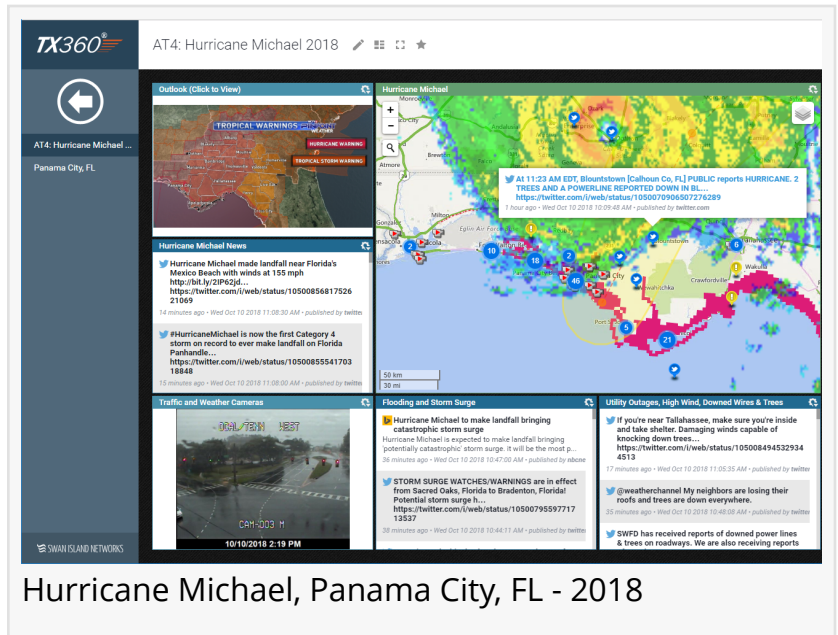


Wildfires, Southern California - 2018

The new TX360 Seasonal Risk service has been developed to meet the needs of a broader set of organizations, who to date may not have had access to leading software technology for this purpose. In addition to use in Global Security Operations Centers, business groups and personnel focused on Business Continuity, Supply Chain, Travel and Employee Safety will be able to leverage this high-end capability, using technology to improve their preparation and response to seasonal disasters.

With over a decade of experience in delivering security intelligence to global intelligence and security teams, Swan Island Networks has long been at the forefront of innovating affordable, scalable, cloud-based, rapidly deployed intelligence solutions. TX360 Seasonal Risk licenses can also be scaled up and configured to fit the needs of any size organization.

Pete O'Dell
Swan Island Networks
+1 503-796-7926
[email us here](#)
Visit us on social media:
[Twitter](#)
[LinkedIn](#)



The screenshot displays the TX360 Seasonal Risk service interface for Hurricane Michael 2018. The interface is divided into several sections:

- Header:** TX360 logo and "AT4: Hurricane Michael 2018".
- Left Sidebar:** Navigation icons and "Panama City, FL".
- Main Content Area:**
 - Outlook (Click to View):** A map showing tropical warnings and hurricane warnings.
 - Hurricane Michael News:** A feed of tweets, including one stating "Hurricane Michael made landfall near Florida's Mexico Beach with winds at 155 mph" and another stating "#HurricaneMichael is now the first Category 4 storm on record to ever make landfall on Florida Panhandle...".
 - Traffic and Weather Cameras:** A live video feed showing a street scene.
 - Flooding and Storm Surge:** Alerts about storm surge watches/warnings in effect from Sacred Oaks, Florida to Bradenton, Florida.
 - Utility Outages, High Wind, Downed Wires & Trees:** Alerts about power line outages and downed trees.
- Right Panel:** A large map showing the hurricane's path and intensity, with a tweet overlay: "At 11:23 AM EDT, Blountstown [Calhoun Co, FL] PUBLIC reports HURRICANE. 2 TREES AND A POWERLINE REPORTED DOWN IN BL...".

Hurricane Michael, Panama City, FL - 2018

This press release can be viewed online at: <http://www.einpresswire.com>

Disclaimer: If you have any questions regarding information in this press release please contact the company listed in the press release. Please do not contact EIN Presswire. We will be unable to assist you with your inquiry. EIN Presswire disclaims any content contained in these releases. © 1995-2019 IPD Group, Inc. All Right Reserved.