

# Besch Design celebrates the start of summer with five tips for remodeling projects

*The Chicago-based architecture has won many awards for its remodeling projects, including the prestigious 2019 Chrysalis regional award*

CHICAGO, IL, USA, July 1, 2019 /EINPresswire.com/ -- [Besch Design Ltd.](#) has provided a guide to homeowners looking to remodel their homes. Remodeling often picks up in the summer, as homeowners pass the inclement weather in the winter months.

The architecture firm encourages potential remodelers to review the below tips to save money and time when it comes to their new projects:

1. **Identify your end goal:** Do you want to keep the focus narrow on a single room? Or would you like to have an addition that will require several pieces of rework? Keeping an end goal in mind will help identify other significant aspects of the process, such as budget and timeline.

2. **Be flexible in the design:** There could be many ways to achieve your goals. Architects look at the house in a holistic way, how the rooms flow together and the house works in totality. Most importantly, they see things differently than a homeowner and might be able to achieve a homeowner's goals of adding space or making something feel bigger, while saving budget.

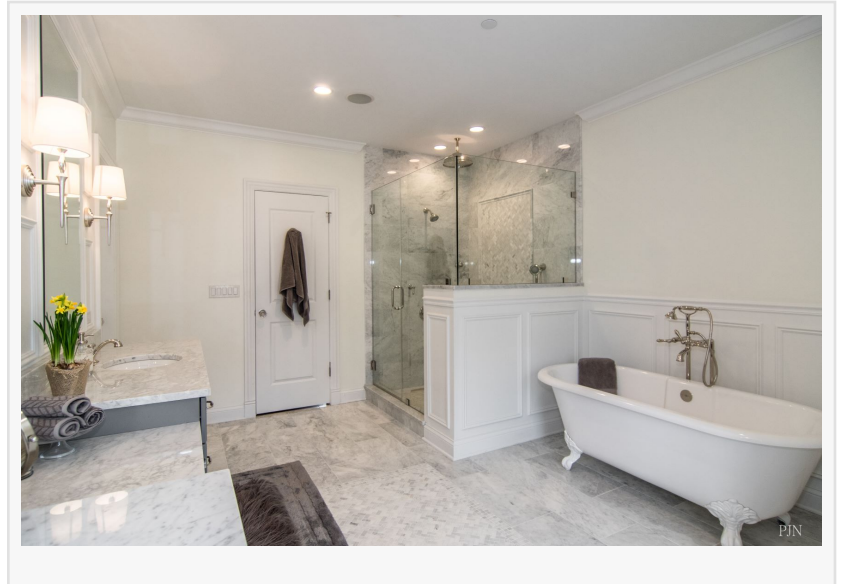
3. **Have a realistic budget:** General square foot construction costs vary by region. In the Chicago area, renovations run about \$200 to \$250 per square foot, excluding fees for services and permits. Consider that you may have to move out during construction so there will be additional housing cost outside of the actual construction cost.

4. **Consider your personal deadlines:** Do you want the remodel done before a child's graduation, a family event at your house or new home purchase? Most homeowners will spend between six and eight weeks working with an architect on the design. Once approved, the architect will take about six weeks to prepare the construction drawing the contractor will build from. The permit



submittal process varies by municipality but on average allow four weeks for permitting to be fully completed. Only then can the construction begin, and a new schedule will be developed based on lead times for material selections and finishes.

5. Be prepared for the unforeseen: Often projects will have unforeseen circumstances that show themselves after construction begins. Older homes with multiple owners will have things behind the walls that are a surprise to all. You never know what homeowner did do-it-yourself projects over the years and if they were done to code or permitted. Depending on the overall scope of work, there may be some things that just need to be brought up to the current code or just fixed since it was really a patch job done unprofessionally.



Overall, many homeowners can save time and money by going with professional advice and seeking architects who could help them navigate the difficulties in permitting and construction.

#### About the Company:

Besch Design Ltd. is a Chicago-based architecture firm that works closely with clients to turn their dreams into finished projects. The firm's philosophy is to treat each project as a new beginning specific to a client's vision and the environment in which it is developed. Whether it's a 100-unit mixed-use building, a home addition or interior renovation, each project begins with a blank canvas. Besch Design has received nine [Houzz.com](https://www.houzz.com) awards since 2014 for service and design. It also recently received the prestigious Chrysalis award for remodel.

Bob Spoerl  
Bear Icebox Communications Inc.  
773-453-2444  
[email us here](#)

---

This press release can be viewed online at: <http://www.einpresswire.com>

Disclaimer: If you have any questions regarding information in this press release please contact the company listed in the press release. Please do not contact EIN Presswire. We will be unable to assist you with your inquiry. EIN Presswire disclaims any content contained in these releases. © 1995-2019 IPD Group, Inc. All Right Reserved.