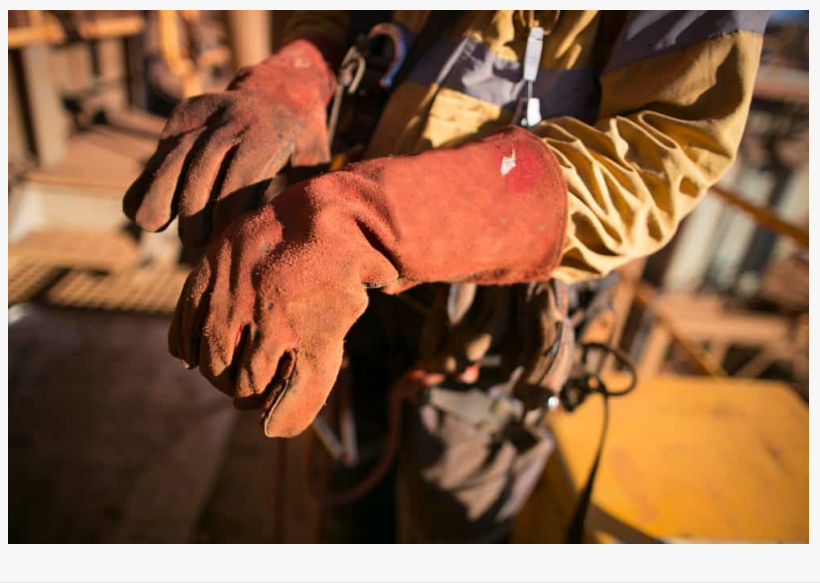


What is Light-Duty Work Restriction?

PHILADELPHIA, PENNSYLVANIA, UNITED STATES, August 19, 2019 /EINPresswire.com/ -- Let's explore this scenario: Say you had a workplace injury and your doctor provides you with a note listing your work restrictions. There's a chance your employer might offer light-duty work.



But what does that mean? What is light-duty?

Light or Modified Duty work means that your employer will place you in a less physically demanding job until you are healed. Alternatively, your employer offers you the option of your current position with reasonable accommodations to fit within the restrictions set forth by your doctor.

However, some employers push their employees beyond the restrictions set forth by the doctor. It is crucial to inform your doctor and make an incident report with your employer. You want to do everything you can to protect yourself. One pitfall that a lot of injured workers get trapped in is pushing themselves to get back to regular duty too fast and sustaining further injury. If you feel as though the company doctor is only looking out for the company's best interest, ask to be seen by another doctor on a list of suggestions. If there is no panel list, choose a doctor who specializes in the type of on-the-job injury you sustained. When and if you have questions, contact a [workers' comp injury lawyer](#) for legal advice, like the Law Offices of Craig Altman, who will happily answer any questions you may have.

Light Duties Defined:

When used regarding workers' compensation law, the term 'light duty' has many meanings. The most common definition of light-duty refers to work that is physically or mentally less demanding than regular job duties on a temporary or permanent basis.

Sometimes organizations refer to the term 'light duty' when an employee is exempt from performing job functions that they are unable to perform because of a disability. 'Light-duty' may also consist of particular positions that are less physically straining or mentally demanding, that were positions created explicitly to provide alternative work for injured employees who, often have a physical or mental disability, or are unable to perform some or all routine duties.

The term 'light duties' is most often associated with the workers' compensation law, and thus the first definition is the most frequent use of the term light duties.

Light Duty Examples:

Light duty, as defined above, is a modified version of your old job or a completely different role, all based on the idea that it is physically or mentally less demanding than your regular job duties based on your disability or your work injury. The light-duty jobs may consist of doing less physical labor, working slower, or working shorter hours, etc. Here are a few examples of light-duty work:

- Taking inventories
- Performing office tasks
- Working a desk job
- Supervising and reporting on job sites
- Monitoring surveillance cameras
- Performing machinery/equipment maintenance

Things To Remember When Taking Light Or Modified Duty Into Consideration:

Your light duty work can affect your workers' compensation claim or the workers' compensation benefits that you are receiving. A few different scenarios that can occur will change the amount and the benefits that you receive.

If you were to take light duty work and:

- You earn the same amount of money or more than what you made before your injury, your payments for lost wages will not continue.
- You earn less money than you did before work-related injuries occurred, you will receive lost wage payments in the form of partial disability benefits.

Furthermore, you do not have to accept light duty work that exceeds the medical restrictions set

by your doctor. If you so choose not to take a light-duty job that accommodates your medical leave restrictions, the employer can request a workers' compensation judge to terminate or modify the benefits you receive. If your employer does not offer a light-duty job, you will continue to receive your workers' compensation benefits.

Act Promptly When Offered Light Duty Work:

When offered employment as light duty or modified duty, injured workers ought to act promptly. If an employee is expected to on a given date, refusing to do so could endanger the employee's workers compensation benefits and workers comp case. Those receiving workers' compensation benefits are free to request an extension of the starting date or time, but if it is not granted, they had better have an excellent reason for failing to show at work. If it is granted and the employee still does not show up for work on time, the employer has the legal right to withdraw the offer, and the workers' compensation benefits may be modified or terminated outright, or if you are concerned about the outcome of accepting light-duty work or have any questions on modified duty and its implications.

Contact [The Law Offices of Craig A. Altman](#) Today

If you suffered a personal injury or were injured while on the job and have questions about light duty work or are in need of legal advice regarding your work program, contact the experienced workers' compensation attorneys at The Law Offices of Craig A. Altman today to schedule a free consultation. Our attorneys can answer any questions you may have regarding your workers' compensation claim, the workers' compensation system, or questions about your insurance company. Call our law firm at (856) 485-4747 or fill out a quick contact form so a member of our legal team can connect with you.

About the Author:

Craig A. Altman graduated from Widener School of Law in 1986, and has obtained verdicts throughout Southeastern Pennsylvania and New Jersey. He is a frequent administrator in the Philadelphia court systems, as well as a judge pro tem for the court system. He has represented thousands of injury victims in his career and believes a fair jury system is a right we have as Americans.

About the Law Offices of Craig A. Altman:

The Law Offices of Craig A. Altman feature a team of skilled lawyers who will stop at nothing to get you the financial compensation you deserve when it comes to your personal injury law case. All of their attorneys practice personal injury and workers' compensation law because they are passionate about protecting your legal rights.

+++++ Disclaimer+++++ This press release is considered advertising and does not constitute any client-attorney privilege and does not offer any advice or opinion on any legal matter. This release was drafted by [Results Driven Marketing, LLC](#): a digital marketing, Public Relations, advertising, and content marketing firm located in Wynnewood, PA.

People also read:

<https://craigaltmanlaw.com/2018/04/25/dont-go-on-the-price-is-right-during-a-workers-compensation-claim/>

<https://craigaltmanlaw.com/2018/05/28/what-happens-if-there-is-a-wet-floor-sign-around-a-slip-and-fall-injury/>

<https://craigaltmanlaw.com/2019/02/02/is-workers-comp-taxable/>

Craig A. Altman
The Law Offices of Craig A. Altman
+1 610-297-2826

[email us here](#)

Visit us on social media:

[Facebook](#)

[Twitter](#)

[LinkedIn](#)

This press release can be viewed online at: <http://www.einpresswire.com>

Disclaimer: If you have any questions regarding information in this press release please contact the company listed in the press release. Please do not contact EIN Presswire. We will be unable to assist you with your inquiry. EIN Presswire disclaims any content contained in these releases. © 1995-2020 IPD Group, Inc. All Right Reserved.