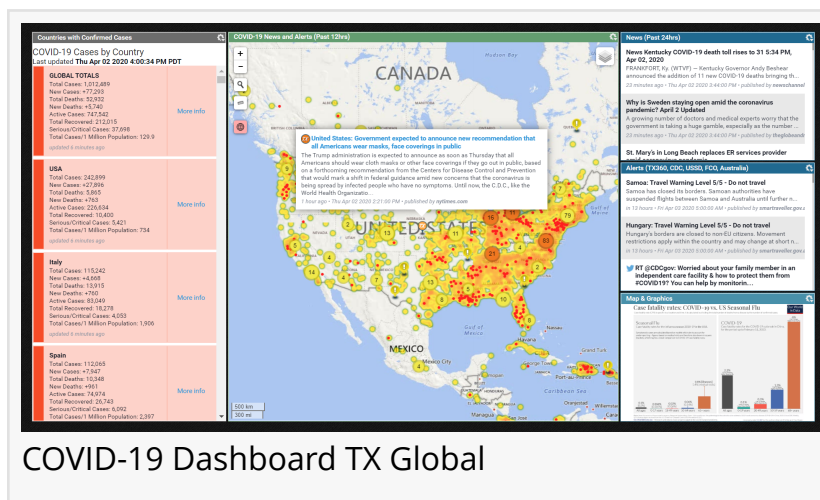


# TX Global Intelligence Alerting Workgroup Released With Industry Disruptive Pricing Model

*TX Global makes the deluge of data manageable: reduces noise, prioritizes relevant information, supports teams*

PORTLAND, OR, UNITED STATES, April 7, 2020 /EINPresswire.com/ -- To help meet organizations' urgent need to respond to the coronavirus epidemic, [Swan Island Networks](#)—a company that has been serving enterprises with timely security-related information for over a decade—today announced the availability of a comprehensive Azure-based COVID-19 information cloud service. The capability can be deployed quickly, used on a distributed basis, and turned off or suspended when the crisis abates.



COVID-19 Dashboard TX Global

“Current solutions are expensive, hard to use, and lock customers into long-term contracts” said Pete O'Dell, CEO of Swan Island Networks. “[TX Global](#), at \$499/month gives a 5-user team immediate access to global alerts that they can share broadly within organizations of any size. Also included is a full library of continually updated dashboards designed for the C-Suite, command centers, and professionals working at home during the COVID-19 restrictions.”

“

TX Global, at \$499/month gives a 5-user team immediate access to global alerts that they can share broadly within organizations of any size.”

Pete O'Dell

The monthly service includes 50 geospatial locations that customers can assign to their locations or assets anywhere on the planet, so they can track incidents using proximity

alerting.

The service also includes an expanding set of COVID-19 alerts and dashboards, global alert feeds curated by Swan Island's intelligence analyst team, alert and dashboard creation capability, and the ability to add hundreds or thousands of organization facilities for proximity-based alerting, locally, regionally, and globally.


“Coordinated intel collection, analysis and distribution can save an organization huge amounts of time and provide uniform, vetted information across the organization,” O'Dell said. “We vet sources, curate important alerts with geospatial context, and present an array of dashboards, each of which focuses on a particular aspect of the critical need—COVID-19—today, but the key information for recovery as we move back to normal.”

The TX Global service is fully upgradable to Swan's [TX360](#) situational awareness and threat

monitoring platform, which allows the customer to build their own internal proprietary sources, methods, alerts, and dashboards.

The TX Global platform can also be licensed and branded by OEM partners under an OEM resale agreement.

Pete O'Dell  
Swan Island Networks  
+1 503-796-7926  
[email us here](#)  
Visit us on social media:  
[Twitter](#)  
[LinkedIn](#)



**United States & Mexico: Trump administration expected to announce border closures limiting non-essential travel between US and Mexico**  
published to [Global Priority Alerts](#) at March 20, 2020, 07:59:00 AM PT

The Trump administration is expected to announce details Friday on plans to curb non-essential travel on the US-Mexico border in an effort to limit movement amid the ongoing coronavirus pandemic, according to acting Homeland Security Secretary Chad Wolf. The expected action on the southern border appears similar to the one taken on the US border with Canada and marks the latest move by the administration to seal off the United States as coronavirus continues to spread. "We're working with both our Canadian partners as well as our Mexican partners to put some restrictions on the travel across that border, really looking at limiting nonessential travel across that border," Wolf told reporters Friday at the White House. "We want to make sure cargo continues, trade continues, healthcare workers continue to be able to traverse that border. But tourism, some recreational activities and other things need to stop during this crisis." More details will be announced later Friday, Wolf said.


JUST IN: Mexico's Foreign Minister [@m\\_ebrard](#) says that the US & Mexico will announce in the next few hours a decision to restrict travel along US/Mexico border. He says that bilateral trade will not be affected. No further details.  
[pic.twitter.com/VCdvoLrdYg](#)

— José Díaz-Briseño (@diazbrisenro) [March 20, 2020](#)

The Trump administration is expected to announce details on plans to limit non-essential travel on the US-Mexico border later today. W/ [@betsy\\_klein](#) [@jmhansler](#):  
[https://t.co/zJthpLQnGm](#)

— Priscilla Alvarez (@priscialva) [March 20, 2020](#)

[View original article: https://www.cnn.com/2020/03/20/politics/us-mexico-border/index.html](#)



**TX Global email alert related to US-Mexico travel restrictions**

This press release can be viewed online at: <http://www.einpresswire.com>

Disclaimer: If you have any questions regarding information in this press release please contact the company listed in the press release. Please do not contact EIN Presswire. We will be unable to assist you with your inquiry. EIN Presswire disclaims any content contained in these releases. © 1995-2020 IPD Group, Inc. All Right Reserved.