

CCC builds portable ICU units to combat the COVID-19 Pandemic

Consolidated Contractors Company in collaboration with CURA, successfully converted a container into a portable Intensive Care Unit (ICU).

ATHENS, GREECE, July 3, 2020

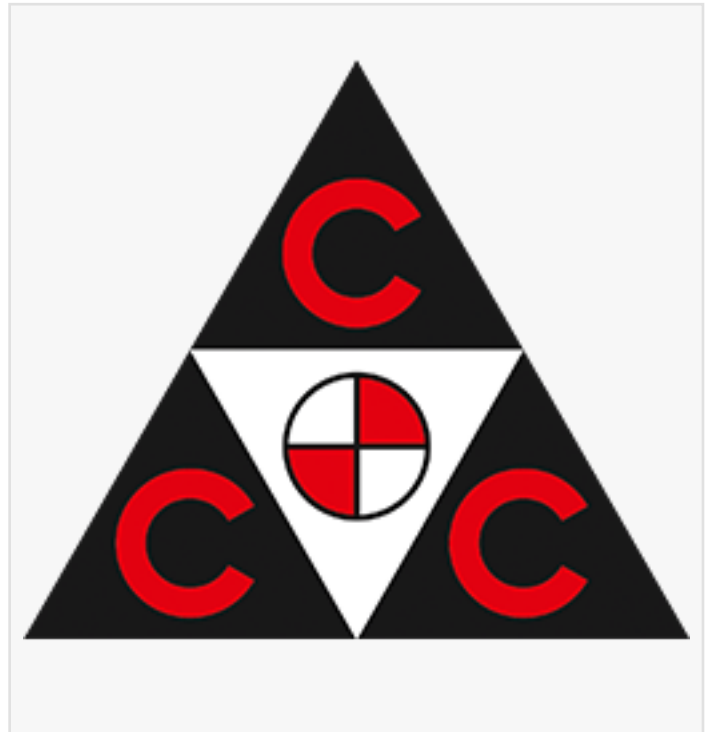
/EINPresswire.com/ -- [Consolidated Contractors Company \(CCC\)](#) in collaboration with the open

source project [CURA](#), successfully converted a container into a portable Intensive Care Unit (ICU) as part of its capacity building efforts in the GCC. CURA (acronym for "Connected Units for Respiratory Ailments" and also "Cure" in Latin) proposes a quick-to-deploy solution to expand emergency facilities and ease the pressure on healthcare systems treating patients infected by coronavirus. CCC is in the process of manufacturing more units to support

hospitals and communities as they struggle to treat an increasing number of patients with respiratory infections. CURA aims to facilitate the work of medical staff in avoiding cross infection and hospital bottle-neck. CCC expects to commercialize and produce more CURA units which will be needed internationally in the next few months.

CURA is an open-source design for emergency ICU units. Each CURA pod is fast to be mounted outside a hospital and is as safe as a regular isolation ward. It uses repurposed shipping containers to create plug-in Intensive-Care Units (ICU) with biocontainment through negative pressure that can restrict the COVID-19 virus from leaving the chamber. Through erecting CURA containers, CCC aims to improve the efficiency of the existing design solutions of field hospitals, producing a compact ICU pod that is quick-to-deploy and safe to work in for medical professionals.

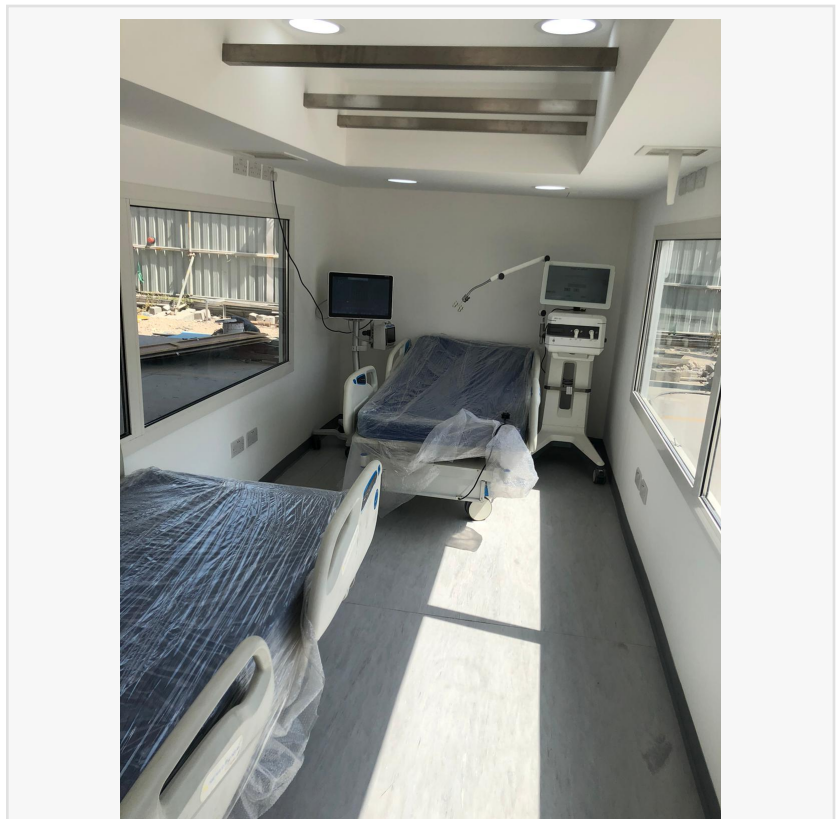
Each unit is hosted in a 20-foot intermodal container, repurposed with biocontainment equipment. An extractor creates indoor negative pressure, complying with the standards of Airborne Infection Isolation Rooms AIIRs. Two glass windows carved on the opposite sides of the containers are meant for doctors to always get a sense of the status of patients both inside and



outside the pods. Each pod works autonomously and can be promptly shipped to any location around the world by land, sea or air, adapting to the needs of the local healthcare infrastructure.

The pod contains all the medical equipment needed for two ICU patients, including ventilators and monitors as well as intravenous fluid stands and syringe drivers. The unit is connected to the rest of the hospital by an inflatable structure, which serves as storage and changing rooms. Potentially, the inflatable unit can be used to connect more than one pod to create multiple modular configurations, either in proximity to a hospital or as a self-standing field hospital.

The ICU Pods are reusable in case of a future emergency as they are weather resistant, easily stored and quickly reassembled units which provide easy and safe storage of equipment. Also, the pods are designed to be reused for other applications once the emergency is over. They are fully functional 15m² units that can be reused in CCC camps as training rooms, medical testing facilities or donated as safe classrooms in developing countries or medical wards in refugee camps.



ICU POD built by CCC



CCC converted CURA container

More information about Consolidated Contractors Company is available at www.ccc.net.

###

[Related Articles:](#)

- CCC Group donates \$100K to Uzbekistan to combat COVID-19
- CCC's Health Interventions for COVID-19

- CCC's Response to COVID-19
- CCC to Donate Coronavirus Testing Kits

About Consolidated Contractors Company (CCC):

Established in 1952 and operating worldwide, CCC has provided more than 68 years of project management, engineering, procurement and construction services to the industry. CCC is currently engaged in 39 ongoing projects globally, and employs around 102,000 people internationally.

CCC's construction operations span the globe including the CIS, Africa, Australasia and the GCC (Bahrain, Kuwait, Oman, Qatar, Saudi Arabia, and the United Arab Emirates) as well as other countries in the Middle East. CCC's partners include some of the most reputable engineering and construction companies in the world including Bechtel, KBR, ABB, Chiyoda, JGC, Linde, Tecnicas Reunidas, Thyssen Krupp, Hochtief, Technip, and Saipem to name a few. The company's landmark construction projects include the Karachaganak Main Works Contract, Kashagan Field Development Project, Dubai Mall, the Abu Dhabi International Airport - Midfield Terminal Building, Riyadh Metro Project, Residential Towers, Hotels, Power Stations, Water and Sewage Treatment Plants and Networks, Roads and Bridges, Industrial and Process Plants and Pipelines around the World.

Consolidated Contractors Company contributes to and is a founding member of The World Economic Forum Partnering Against Corruption Initiative - PACI and is a founding member of The Pearl Initiative. CCC also contributes and is a member of the UN Global Compact, Transparency International, and Anti-Corruption London, all to ensure its business ethics, anti-bribery & anti-corruption policies and sustainable growth in all forms of its operations.

For more information on how to purchase a CURA unit or for interviews, please contact:

Saji Khoury
Consolidated Contractors Company
+30 21 0619 9512
[email us here](#)

This press release can be viewed online at: <https://www.einpresswire.com/article/520899810>

EIN Presswire's priority is source transparency. We do not allow opaque clients, and our editors try to be careful about weeding out false and misleading content. As a user, if you see something we have missed, please do bring it to our attention. Your help is welcome. EIN Presswire, Everyone's Internet News Presswire™, tries to define some of the boundaries that are reasonable in today's world. Please see our Editorial Guidelines for more information.

© 1995-2020 IPD Group, Inc. All Right Reserved.