

# Michaan's to Offer Natural Sri Lankan Color-Change Sapphire Ring

*Michaan's to Offer Natural Sri Lankan Color-Change Sapphire Ring; Pair of Maruni Oak-Frame Folding Chairs in August 22 Gallery Auction.*

ALAMEDA, CA, USA, August 14, 2020  
/EINPresswire.com/ -- Press Office  
Contact!

Talesa Eugenio  
(510) 740-0220 x 116

Auction:

Gallery Auction

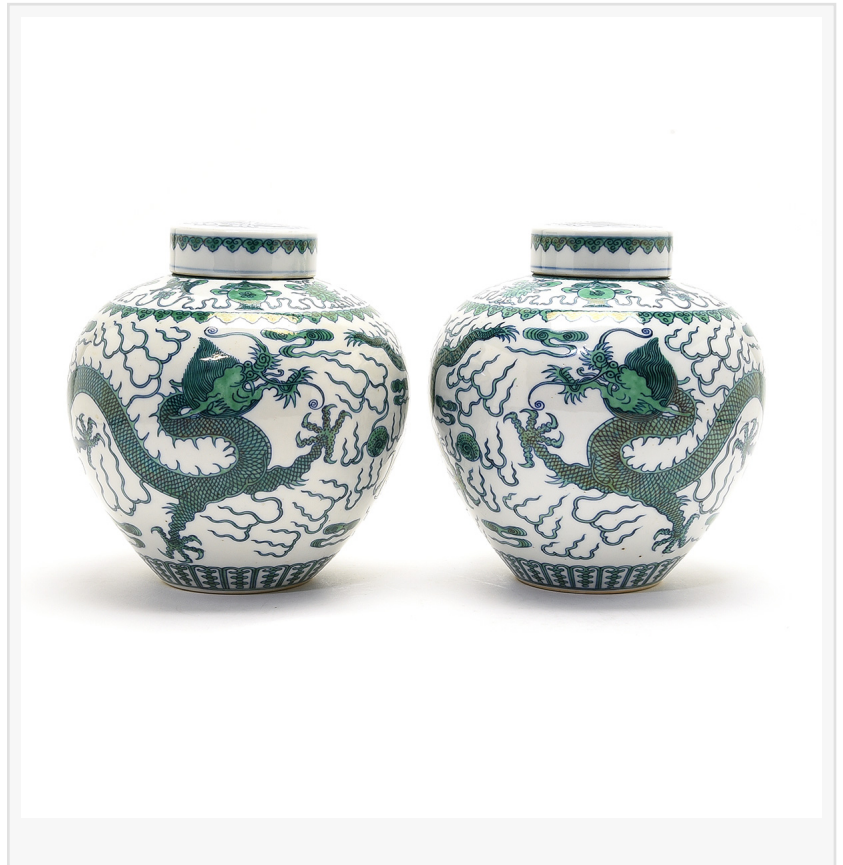
Saturday August 22, 2020 at 10am

Location:

[Michaan's Auctions](#)

2751 Todd Street  
Alameda, CA 94501

Michaan's to Offer Natural Sri Lankan  
Color-Change Sapphire Ring;  
Pair of Maruni Oak-Frame Folding  
Chairs in August 22 Gallery Auction.



Michaan's Auction House, located near the former jetways on Alameda Island, off of Oakland, announced highlights of its August 22 Gallery Auction today. The jewelry section of the sale includes a fine pair of 18 karat white gold semi-hoop earrings, inset with diamond and yellow diamond stones, in geometric and foliate designs. Estimate: \$9,000 - 12,000. This section of the auction also includes a 14 karat white gold ring centering a 7.80 karat heart-shaped Ceylonese natural color-change sapphire. The ring comes with an AGL Prestige Gemstone Report that certifies the stone is natural, unheated and untreated. The pre-sale estimate is \$5,000 - 7,000. The well-rounded Fine Art section of the auction includes a Fremont Ellis painting, "Winter Tree Grove," an oil on paperboard. Ellis was a member of the Santa Fe painting group, "Los Cinco Pintores," in the 1920s, eventually breaking away. Throughout his career, he continued to focus on his beloved Western Terrain. The painting is estimated to realize \$2,000 - \$3,000. This section of the auction also includes a dynamic modern triptych lithograph by Roy Lichtenstein, "As I Opened Fire" of 1964. This explosive lithograph is estimated to realize

\$1,000 - \$2,000.

Two other works of note in the Fine Art Section are Max Ernst's Mask-like glass face, "Elfo 3,"

estimated at \$2,000 - \$4,000; and

"Paysage Normandy," by French artist Maurice de (1876-

1958). The mood-driven oil on canvas is estimated to realize \$3,000 - \$5,000 in the sale.

Pairs are the driving forces for the furniture section of the auction: a pair of California

Craftsman John Kapel Walnut Chests of Drawers are estimated to realize \$800-1,200. These

come from an estate property with several Kapel items on offer. The grain, and the simplicity of

design allow for the lustrous tone of the wood to shine through. The second pair of items is by

Maruni Studio early folding chairs, Hiroshima, Japan. The fine oak-framed chairs with red nylon

woven mesh strap upholstery are the perfect sculptural acquisition for a mid-century lounge.

Estimate: \$1,600 - \$2,000. This section also includes fine rugs and carpets; silver & lighting.

A private collection of Chinese porcelain of Arabic interest will draw international bidders. A

Large Chinese Blue and White 'Arabic Inscribed' Jar, is estimated to sell for between \$1,800

and \$2,500.

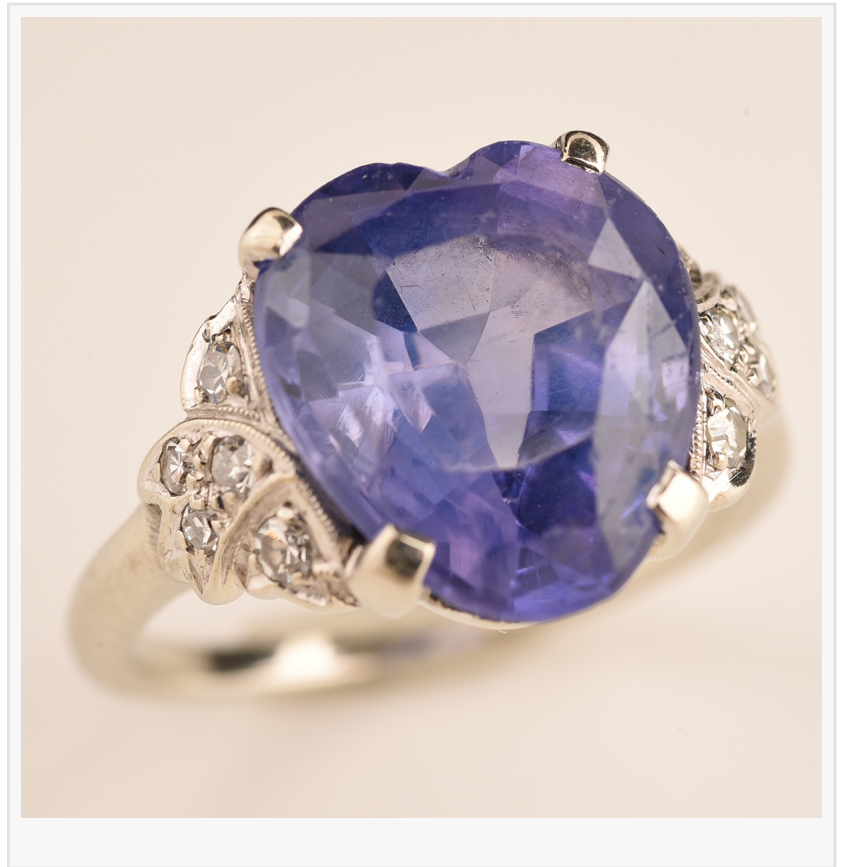
The auction is on August 22 starting at 10 am, and broadcast on Michaan's Live bid.michaans.com as well as on www.liveauctioneers. For further information please go to www.michaans.com or call 510-740-0220.

By Jill Weitzman Fenichell





Talesa Eugenio  
Michaan's Auctions  
+1 (510) 740-0220  
[email us here](#)  
Visit us on social media:  
[Facebook](#)  
[Twitter](#)



---

This press release can be viewed online at: <https://www.einpresswire.com/article/524000567>

EIN Presswire's priority is source transparency. We do not allow opaque clients, and our editors try to be careful about weeding out false and misleading content. As a user, if you see something we have missed, please do bring it to our attention. Your help is welcome. EIN Presswire, Everyone's Internet News Presswire™, tries to define some of the boundaries that are reasonable in today's world. Please see our Editorial Guidelines for more information.

© 1995-2020 IPD Group, Inc. All Right Reserved.