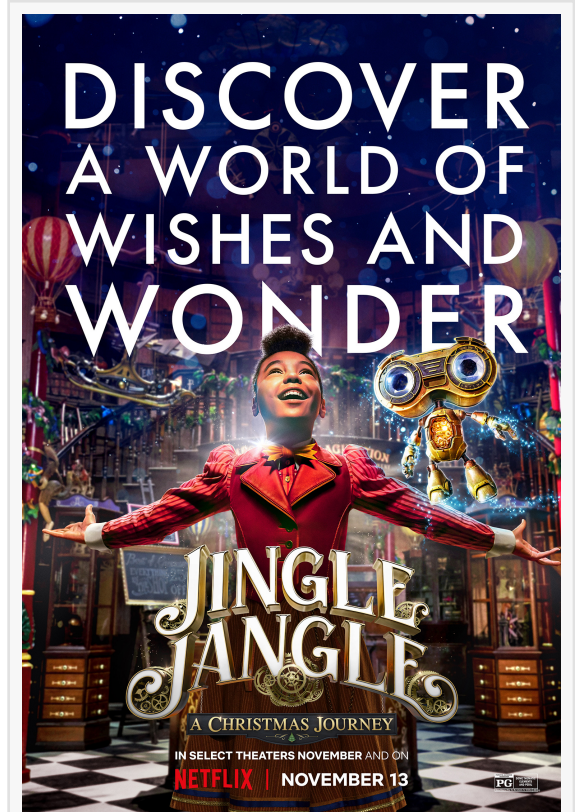


Netflix Jingle Jangle: A Christmas Journey Trailer

Releasing Globally on Netflix on November 13, 2020

LOS ANGELES, CA, UNITED STATES, October 12, 2020 /EINPresswire.com/ -- On November 13th, 2020, Netflix will release the musical adventure and visual spectacle for the ages, *Jingle Jangle: A Christmas Journey*. This is a wholly fresh and spirited family holiday event. Set in the gloriously vibrant town of Cobbleton, the film follows legendary toymaker Jeronicus Jangle (Academy Award winner Forest Whitaker) whose fanciful inventions burst with whimsy and wonder. But when his trusted apprentice (Emmy winner Keegan-Michael Key) steals his most prized creation, it's up to his equally bright and inventive granddaughter (newcomer Madalen Mills) — and a long-forgotten invention — to heal old wounds and reawaken the magic within. From the imagination of writer-director David E. Talbert and featuring original songs by John Legend, Philip Lawrence, Davy Nathan, and "This Day" performed by Usher and Kiana Ledé, *Jingle Jangle: A Christmas Journey* reminds us of the strength of family



Jingle Jangle: A Christmas Journey

Written and Directed by: David E. Talbert

Produced by: Lyn Sisson-Talbert, p.g.a., David E. Talbert, p.g.a., Kristin Burr, p.g.a., John Legend, Mike Jackson, David McIlvain

Cast: Forest Whitaker, Madalen Mills, Keegan-Michael Key, Sharon Rose, Phylicia Rashad, Anika Noni Rose, Ricky Martin, Kieron Dyer, Justin Cornwell, Lisa Davina Phillip, Hugh Bonneville

Corby Pons

WIT PR

+1 323-807-2199

[email us here](#)

Visit us on social media:

[Facebook](#)

[Twitter](#)

This press release can be viewed online at: <https://www.einpresswire.com/article/528260491>

EIN Presswire's priority is source transparency. We do not allow opaque clients, and our editors try to be careful about weeding out false and misleading content. As a user, if you see something we have missed, please do bring it to our attention. Your help is welcome. EIN Presswire, Everyone's Internet News Presswire™, tries to define some of the boundaries that are reasonable in today's world. Please see our Editorial Guidelines for more information.

© 1995-2020 IPD Group, Inc. All Right Reserved.