

A Doctor or Specialist Can Be in More Than One Place at the Same Time During COVID

The lack of specialists and primary care physicians during COVID and beyond can be solved with technology.

PALATINE, ILLINOIS, UNITED STATES, December 16, 2020 /

EINPresswire.com/ -- As we approach 2021 and face the new normal of healthcare, there will be a focus on getting specialized care to patients that need it regardless of their location. Whether it is an emergency stroke patient, a high-risk pregnancy, or an on-site emergency call with a

paramedic, the need for a physician to be able to review real-time imaging from an ultrasound or other imaging technology will be a lifesaver. Technology that connects healthcare providers and technologists with doctors and specialists is now available and being used by proactive sites.

“

This gives immediate access with real-time tools to make a diagnosis from anywhere on any device.”

Steve Austin COO

There are multiple medical situations where a specialist or higher-level professional must view images or consult in how they are acquired. COVID 19 has added to the triage issues in receiving patients in critical care, and remote lung sweeps with an ultrasound would help enable a more efficient intake of patients and where they can go in the hospital before arrival.

During a pandemic, and the worst time possible, the

United States faces a growing shortage of primary care physicians. However, a report from Merritt Hawkins, the US leading physician search firm, indicates a significant lack of medical specialists. The Review reveals the types of physicians that hospitals and healthcare facilities are seeking nationwide. It indicates that 78% of Merritt Hawkins' recruiting engagements were for specialists over the last year, up from 67% four years ago. Driving this demand is the aging patient demographic. Over 10,000 baby boomers turn 65 every day, and patients in this age group tend to visit a physician at approximately three times the rate of younger people. While senior citizens represent only 14% of the population, they account for 34% of all inpatient procedures and 37% of all diagnostic tests and treatments, It is specialists who care for cardiac,



This gives immediate access with real-time tools to make a diagnosis from anywhere on any device.

stroke, bones, and mental health of older patients and more of them will be needed as the trend continues. This demographic does not consider young adult issues such as maternal-fetal medicine.

Gaining access to a specialist will become more and more difficult. Technology can be a saving grace in getting more specialists in front of and caring for more patients without risk of exposure and much higher efficiency.

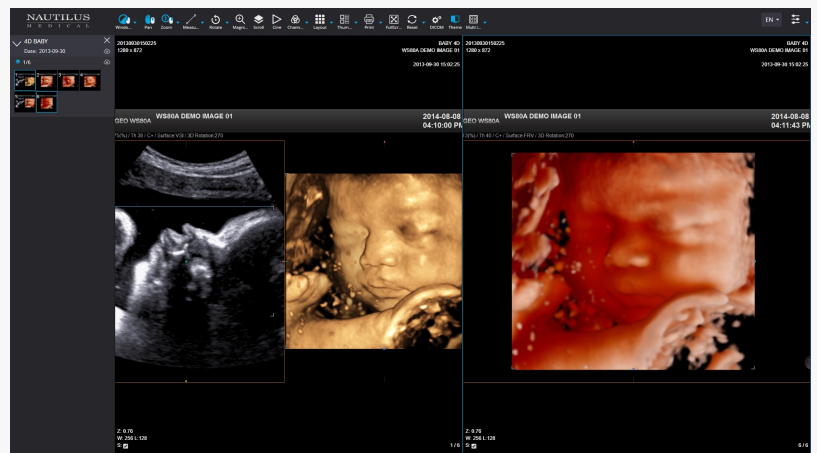
[Nautilus Medical](#) is a company solving these issues in [telehealth](#) with a technology called [TeleRay](#). This platform delivers face to face consultation while viewing the patient and imaging in real-time. It provides quality by utilizing peer to peer connections and high-speed cellular networks when bandwidth is low. Physicians may review real-time imaging that is taking place in the field, rural areas, and practices outside of their local area- or anywhere in the world! The Association of American Medical Colleges (AAMC) acknowledged this fact in its most recent physician supply report, which projects a shortage of up to 67,000 specialists by 2032. The Review further suggests that the use of value-based physician payments is gaining momentum. Of those Merritt Hawkins clients offering

physicians a production bonus last year, 56% were based in whole or in part on value-based metrics such as patient satisfaction and outcome measures, up from 43% the previous year.

Timothy Kelley, CEO of Nautilus, said, "doctors and specialists can use TeleRay in many situations." He explained that TeleRay could view modalities such as ultrasound in real-time from remote locations. He said, "Emergency responders, maternal-fetal medicine doctors, cardiologists, and more can view the patient, the modality, and speak to the sonographer or technologist to get results that matter." Ultrasounds can determine internal bleeding, injuries,



TeleRay is available with medical carts and optional cellular for complete mobility



FDA viewer with image of 4D baby. TeleRay for maternal fetal medicine use.

and fractures miles away.

Nautilus Medical COO Steve Austin likes to talk about the platform's advantages, including the storage, sharing, and access to images after they are captured. "This gives immediate access with real-time tools to make a diagnosis from anywhere on any device." He continued, "Its prime time for a platform like this that combines telehealth with radiology, TeleRay is the only platform that offers real-time viewing of the modalities which can be critical in high-risk situations where a specialist can virtually look over the shoulder of the sonographer or technologist as if they're in the room to adjust, view, and consult."

The financial benefits to complete telehealth platforms are immense. Beyond the clinical and triage benefits, implementing a virtual care option can help offset the revenue decline due to reduced visits. Many professionals will be looking for technology to solve growing problems with access and care in 2021, and now there are solutions to manage the situation. The main issue is making sure the connection is high-quality speed and access to additional data and images. Good quality helps ensure better outcomes, which is the goal of all healthcare visits.

About Nautilus Medical: Nautilus Medical is a technology leader with the only telehealth radiology platform for the management and distribution of medical images and patient information. We offer the most secure platform for interactive consultation while viewing images, reports, while still seeing each other, including family members or specialists on a multi-person call. Nautilus is widely recognized as the most reliable and advanced software on the market, with multiple filed patents at the best value. With more than 3000 users, along with 70% of the top 50 medical centers including Cleveland Clinic, Cedars-Sinai, Harvard, Cornell, Columbia, Northwestern, Shriners, Barnes-Jewish, Beth Israel, UPMC, UPENN, NY Presbyterian, and many more. Nautilus has been growing overseas and can be found in more than 20 countries. Join the fastest growing telehealth & image management family in the US.

Timothy Kelley
Nautilus Medical Technologies
+1 8665206477
tim@nautilusmedical.com
Visit us on social media:
[Facebook](#)
[Twitter](#)
[LinkedIn](#)

This press release can be viewed online at: <https://www.einpresswire.com/article/532848094>

EIN Presswire's priority is source transparency. We do not allow opaque clients, and our editors try to be careful about weeding out false and misleading content. As a user, if you see something we have missed, please do bring it to our attention. Your help is welcome. EIN Presswire, Everyone's Internet News Presswire™, tries to define some of the boundaries that are reasonable in today's world. Please see our Editorial Guidelines for more information.

