

Combination Kit includes SWS Socket Wrench Torque Sensor and PHM-100 Portable Handheld

Fully Portable Hand-Held Transducer Indicator

TEMECULA, CALIFORNIA, UNITED STATES, January 30, 2021 /EINPresswire.com/ -- New from Transducer Techniques an economically priced System combination comprising of our popular SWS ([Socket Wrench Torque Sensor](#)) and our PHM-100 [Portable Hand Held Load Cell Indicator](#). This system provides accurate measurements of bolt or nut wrenching torques in either direction, so break-away torques can be measured.

The PHM-100 has a Peak Hold feature that captures at less than one millisecond and operates on a 9-volt battery for 60 hours. The SWS is a reaction type torque sensor offered in 6 ranges from 10 FT. LBS. to 1000 FT. LBS. full scale.

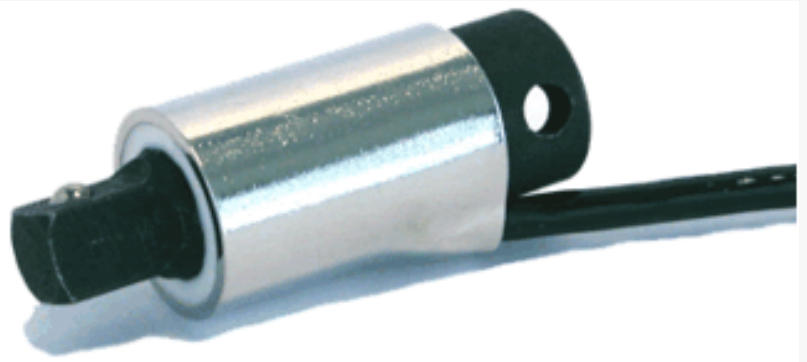
Accuracies are consistent with highly accurate [strain gauge load cells](#).

<https://www.transducertechniques.com>

New Cal-Teds Plug & Play Smart Sensor Option Now Available smart sensors **PLUG&PLAY** IEEE 1451.4 compliant



SWS / PHM-100 System



SWS Series

Customer Support
Transducer Techniques, LLC
+1 800-344-3965

[email us here](#)

Visit us on social media:

[Facebook](#)

[Twitter](#)



SSI Portable Handheld
Load Cell Indicator

This press release can be viewed online at: <https://www.einpresswire.com/article/535146673>

EIN Presswire's priority is source transparency. We do not allow opaque clients, and our editors try to be careful about weeding out false and misleading content. As a user, if you see something we have missed, please do bring it to our attention. Your help is welcome. EIN Presswire, Everyone's Internet News Presswire™, tries to define some of the boundaries that are reasonable in today's world. Please see our Editorial Guidelines for more information.

© 1995-2021 IPD Group, Inc. All Right Reserved.