

Spotted Lanternfly Forecast and How to Get Rid of Nymphs

Giroud Tree and Lawn explains how to kill Spotted Lanternfly Nymphs that are starting to hatch in parts of Philadelphia and surrounding counties.

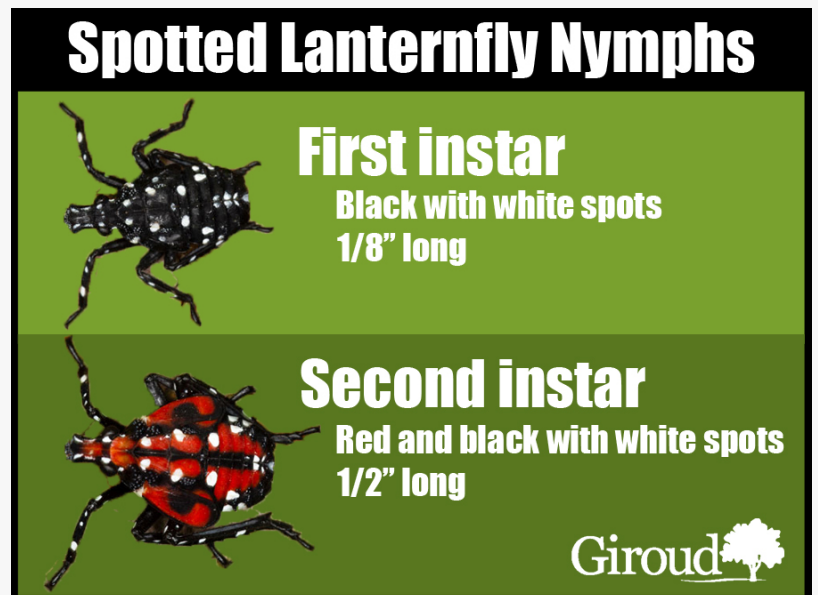
HUNTINGDON VALLEY, PA, UNITED STATES, May 12, 2021

/EINPresswire.com/ -- Spotted Lanternfly Nymphs are starting to hatch in parts of Philadelphia, Bucks, Montgomery, and Chester Counties. Now that these invasive insects are emerging from their eggs as nymphs, it's time to take action.

Spotted Lanternfly goes through several identities during its life cycle. Adult females lay eggs in the fall, which they cover in a protective clay-like secretion. The young nymphs that emerge from the eggs in spring are black with white spots. In early summer, they gain red markings on their bodies. Later in midsummer, they become adults and shed their skin to form wings on their backs.

How to Get Rid of Spotted Lanternfly Nymphs

The experts at [Giroud Tree and Lawn](#) have been working closely with [Penn State University's Department of Entomology and Cooperative Extension](#) to determine the best treatments and techniques for combating Spotted Lanternfly in each of the life cycle stages. Chemical spray treatments are only recommended if there are high populations of nymphs on a specific plant or tree.



Spotted Lanternfly Nymphs have two phases. The young nymphs that emerge from the eggs in spring are black with white spots. In early summer, they gain red markings on their bodies.



Research shows that the best time to control Spotted Lanternfly is at the adult stage because nymphs love to move around and don't stay on a single plant for long. To reach all the plants that might attract nymphs, the entire yard would have to be treated with a long, residual contact spray insecticide. Even with these treatments, nymphs can still invade from other locations. Also, although insecticide will kill Nymphs, it can also kill beneficial insects and pollinators, such as bees and butterflies. The insect experts at Giroud prefer to use these types of sprays for targeted control, not broad-scale treatments.



Sticky bands are an effective way to trap Spotted Lanternfly Nymphs. Homeowners should cover them in chicken wire to prevent birds and small mammals from becoming trapped.

What's the Solution for Controlling Spotted Lanternfly Nymphs?

Ultimately, the best way to combat Spotted Lanternfly during the Nymph Stage is with manual methods. Sticky bands, Circle Traps, and good old-fashioned squishing are key to getting ahead of these awful insects before they reach adulthood.

According to Penn State:

"Currently, the most effective trap for SLF is a sticky band wrapped around the trunks of trees. SLF nymphs and adults are trapped in the sticky barrier as they crawl up from the ground onto the trunks and move upward to feed on the tree."

Sticky bands can be found at most hardware stores and online. They are easy to install, but they should be changed weekly for the best results. However, it is important to be aware that these sticky bands can accidentally trap other insects and also small animals and birds. To avoid this problem, Penn State recommends cutting the sticky bands lengthwise so the surface area is not as broad. Spotted Lanternfly Nymphs are small and climb up the tree. They will get trapped at the bottom of the sticky band, so there is no need to have such a tall band. Penn State also urges homeowners to wrap the outside of the tree with chicken wire over the area of the sticky band. This will prevent squirrels, birds, and other small animals from becoming stuck to the band.

Alternative Solution to Trap SLF

If homeowners are concerned about trapping small animals and other wildlife in sticky bands, Penn State offers an alternative solution, the Circle Trap. Penn State provides directions for how to build a Spotted Lanternfly Circle Trap on their website.

“Recent research has shown that an entirely different kind of type of trap is also very effective and can dramatically reduce the chances of capturing other creatures. This new style trap is made of plastic-coated insect screening and does not use any sticky material at all. It is basically a tunnel that SLFs walk into. When they move upward in the trap, they end up in a dead-end collection container where they die.” -extension.psu.edu

Nymphs Are a Warning Sign to Take Action

Equally important, homeowners should recognize that the Nymphs are an early warning sign to get prepared for adults, which will emerge by July or August. During this stage, the insect is most destructive. It's also the time when control is most effective because adults don't move around as much and tend to attack specific trees. As a result, chemical treatments can be used to target the high-risk trees and protect them from Spotted Lanternfly.

Researchers are anticipating a major infestation of Spotted Lanternfly this season. Once the adults begin to swarm, If homeowners are seeing Nymphs now or have high-risk trees such as Maples or Willows, they should call an ISA Certified Arborist to evaluate the property. For more information, please visit [Giroud's Spotted Lanternfly Info Page](#).

About Giroud Tree and Lawn

Giroud Tree and Lawn specializes in tree service, lawn care, and mosquito and tick control programs that make customers love doing business with the company since 1974. Serving Bucks, Montgomery, and Philadelphia Counties, the company offers professional tree and lawn evaluation, tree pruning, tree removal, insect and disease control, fertilizing, stump removal, traditional and 100% organic lawn programs, and mosquito and tick control. Giroud Arborists are certified by the International Society of Arboriculture (ISA) and have the knowledge and experience required to properly diagnose, treat and maintain trees and lawn health. The company is Accredited by the Tree Care Industry Association and Better Business Bureau. The “Giroud Treework for Charity” program donates free tree care services to parks, historical sites, and other non-profit organizations located in the Company's service area. For more information, visit the company website at <http://www.giroudtree.com> or call 215-682-7704.

Jeanne Hafner

Giroud Tree & Lawn

+1 215-682-7704

[email us here](#)

Visit us on social media:

[Facebook](#)

[Twitter](#)

This press release can be viewed online at: <https://www.einpresswire.com/article/540938154>

EIN Presswire's priority is source transparency. We do not allow opaque clients, and our editors

try to be careful about weeding out false and misleading content. As a user, if you see something we have missed, please do bring it to our attention. Your help is welcome. EIN Presswire, Everyone's Internet News Presswire™, tries to define some of the boundaries that are reasonable in today's world. Please see our Editorial Guidelines for more information.

© 1995-2021 IPD Group, Inc. All Right Reserved.