

ReleaseOwl, the native DevOps platform for SAP, announces advanced change management for N N+1 Landscape

ReleaseOwl has announced its new Summer'21 release with advanced DevOps features for SAP applications to streamline the change management across N N+1 Landscape

HYDERABAD, TELANGANA, INDIA, June 23, 2021 /EINPresswire.com/ -- ReleaseOwl, the native DevOps platform for SAP today has announced its Summer'21 release with a focus on seamless change and release management for parallel landscapes.

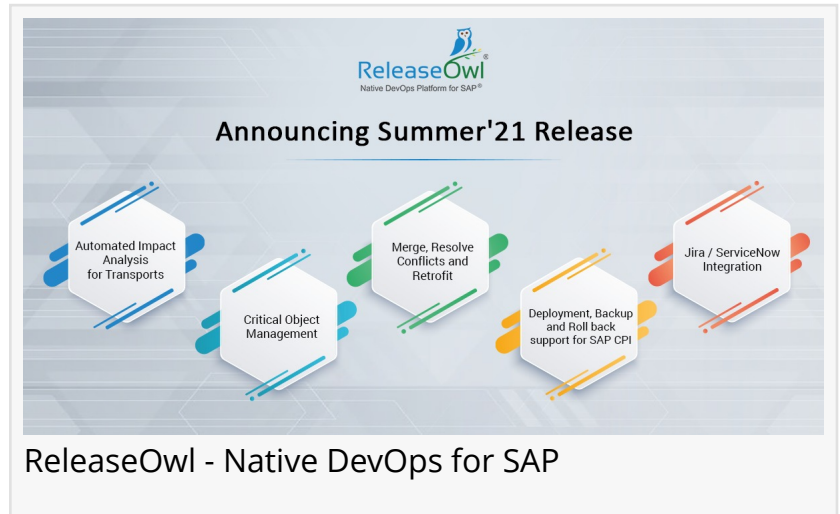
This release will add significant value for teams developing applications on SAP on-premise (ECC, S/4 HANA) to be able to effortlessly migrate their changes across multiple landscapes.

Being a SAAS offering and natively built on SAP - ReleaseOwl significantly solves the challenges related to Solman and other tools in the marketplace with the installation, setup, operations, and infrastructure maintenance.

“

Efficient change management across parallel landscapes is critical to the agile transformation of SAP practice. Advanced transport management features of Summer'21 Release add great value to SAP teams”

*Niranjan Gattupalli, Founder
CEO of ReleaseOwl*



Here are some of the highlights of the Summer' 21 Release:

Automated Transport Impact Analysis

SAP teams now have a rich early warning system for their transports with comprehensive validation checks like transport dependencies, downgrade protection, dynamic test class detection for the objects, ABAP test execution and code coverage reports, static code analysis for ABAP with ATC integration, package versions check, alerts and

approval process for critical objects, conflict management and many more.

Merge editor and retrofit mechanism for parallel landscapes

This release announces the first of its kind cloud-based merge and retrofit editor for SAP both customization and workbench requests. SAP teams need not coordinate heavily across multiple time zone to resolve conflicts in case of migrating changes between their implementation and maintenance landscapes. ReleaseOwl users with transport management permissions can resolve merge conflicts in the browser and effortlessly retrofit changes across parallel landscapes.

Transport of Copies

Transport of Copies is a great feature for quickly moving a change into a unit testing environment without actually releasing the transport. This will simplify the number of transports to be created to complete a particular user story or feature and thereby reducing the sequencing hassles associated with moving those transports in the particular order across the SAP landscape.

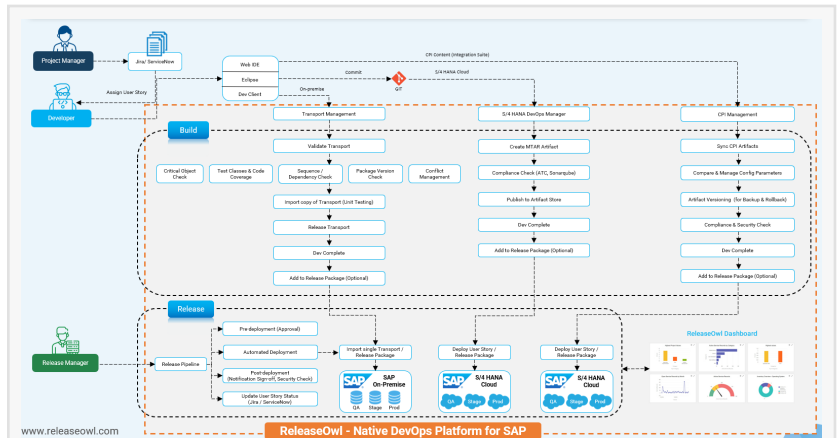
Unified Deployment Architecture

ReleaseOwl announced a unified deployment architecture with this Summer' 21 release. The Release Pipelines designed for the automated deployments into each environment in the SAP landscape along with necessary orchestration involving approvals, task assignments and notifications are flexible to handle multiple types of SAP artifacts in uniformly. Be it the bundle of transports to be moved to UAT or changes coming from ABAP GIT or the latest Multi-Target Archive (MTAR) bundle of the cloud application or the Packages / IFlows / Value Streams of your SAP CPI (Cloud Integration Suite) - all handled effectively by the Release Pipelines making ReleaseOwl, the first ever platform with unified [DevOps for SAP](#)

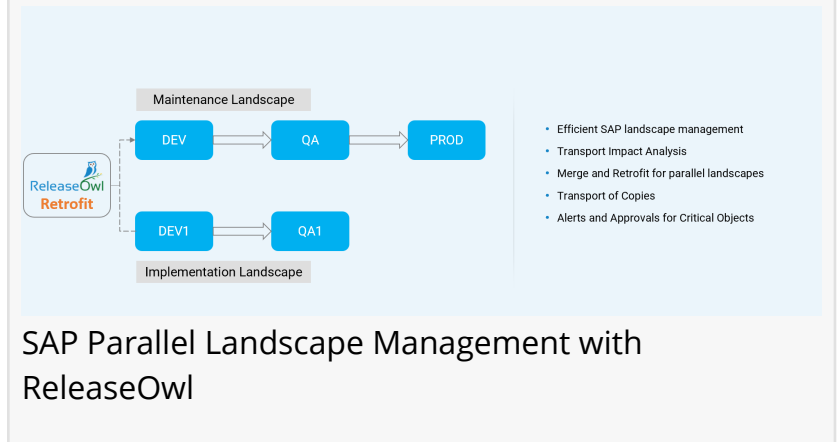
Jira / ServiceNow Integration

With Summer' 21 release, webhooks are released for Jira and ServiceNow, so that any update made to a user story or incident in Jira or ServiceNow will update automatically in the ReleaseOwl transport management module.

The sync with ALM is bi-directional with all the transport validation results, approval details and deployment (import) information of the transports related to the user story will be all be updated back to Jira / Service now so that your ALM will be your source of truth.



ReleaseOwl-SAP-DevOps-Platform



SAP Parallel Landscape Management with ReleaseOwl

Benefits of ReleaseOwl for SAP customers

1. ReleaseOwl is the DevOps Platform for SAP that is future-ready.

ReleaseOwl is the only platform that has support for SAP on-premise, S/4 HANA Cloud, and SAP CPI (Integration Suite) which means that while it fully helps customers with rich change management for their current ECC systems, it will be also a valuable asset for customers moving to cloud or directly developing applications on S/4 HANA cloud.

2. The total cost of ownership of ReleaseOwl is less compared to Solman and other tools.

ReleaseOwl comes in as a SAAS offering with user subscription-based pricing. It comes with a commitment to application upgrades and infrastructure maintenance at no extra cost. Customer case studies have revealed that the cost of ownership with Solman is approximately 200K (for two Solman systems - installation, setup, infrastructure cost and having a Solman expert in addition to change manager for a team of 20) per annum over three years.

The cost of ReleaseOwl is much lesser compared and with no additional investment in infrastructure.

3. A comprehensive early warning system for SAP application development.

With its transport impact analysis and retrofit editor, SAP teams can ensure high-quality change management and experience lesser downtimes or deployment issues during production releases especially when migrating changes between multiple SAP landscapes.

This shift left strategy of providing more power to development teams in the early phases of SDLC will bring quality at the source and faster delivery of features.

If you are an IT leader or leading agile transformation of the SAP practice and looking to streamline and accelerate change management without heavy IT investment, ReleaseOwl will be the tool of your choice.

More Information about the Releaseowl can be found on the [Website Blog](#) Section

The product offering – [ReleaseOwl, DevOps for SAP](#) is available for purchase on SAP Store, the digital marketplace for SAP partner offerings.

At SAP Store, businesses can discover approximately 1,500 innovative partner solutions integrating with and extending SAP solutions. There, customers can find the SAP-validated partner apps they need to grow their business. Find, try, buy, manage and deploy SAP partner solutions digitally at www.store.sap.com.

ReleaseOwl is a partner in the SAP PartnerEdge program. As such, it is empowered to build, market, and sell software applications on top of SAP Cloud Platform, the market-leading

platform-as-a-service offering from SAP. The SAP PartnerEdge program provides the enablement tools, benefits, and support to facilitate high-quality, disruptive applications focused on specific business needs – quickly and cost-effectively. The program includes access to all relevant SAP technologies in one simple framework under a global contract.

About ReleaseOwl,

ReleaseOwl is a SaaS-based enterprise software delivery company with a mission to help companies accelerate their SAP adoption, release faster with lesser risk and produce higher reliability using its rich DevOps suite designed and built natively for SAP.

For more information, press only:

Sales: sales@releaseowl.com

Phone (USA) : +1-469-998-4445

Phone (India): : +91-7391866666

Website: www.releaseowl.com

Niranjan Gattupalli

ReleaseOwl Private Limited

niranjan@releaseowl.com

Visit us on social media:

[Facebook](#)

[Twitter](#)

[LinkedIn](#)

This press release can be viewed online at: <https://www.einpresswire.com/article/544382805>

EIN Presswire's priority is source transparency. We do not allow opaque clients, and our editors try to be careful about weeding out false and misleading content. As a user, if you see something we have missed, please do bring it to our attention. Your help is welcome. EIN Presswire, Everyone's Internet News Presswire™, tries to define some of the boundaries that are reasonable in today's world. Please see our Editorial Guidelines for more information.

© 1995-2021 IPD Group, Inc. All Right Reserved.