

Tejy Inc. Resolving Construction Project Challenges with BIM Services in USA

Construction Project Challenges Resolved with BIM Engineering Services in USA

DC, WASHINGTON, UNITED STATES, July 12, 2021 /EINPresswire.com/ -- Tejy Inc. – one of the top BIM consultants in USA is resolving construction project challenges with Building Information Modeling (BIM) technology. The DBE /MBE Certified Women-Owned Business in D.C. meets the fast-paced schedule of the MEP engineers, structural engineers, contractors, architects and other construction professionals. As an Architectural, Engineering, Construction Management & BIM Services Company in USA, Tejy Inc. serves various areas in DC, MD, Virginia, Baltimore, New Jersey, New York, Richmond, etc. Through an extensive network of clients, Tejy has successfully executed 2500+ projects in USA.



“

Through Revit BIM modeling, we streamlined the project information management process, including document control, resolution of design problems and clash coordination amongst MEPFP services.”

Sukh Singh

Sukh Singh, V.P., Tejy Inc. stated – “Our BIM Engineers are collaborating with clients and other stakeholders involved in the process to resolve construction project challenges. Few of our landmark BIM projects where we have successfully resolved challenges with BIM include Medical Facilities Support Services (MFSS II) by the US Army Corporation of Engineers, DC Courthouse, Northeast Water Purification Plant Expansion in Houston, Architectural BIM Model for Religious Building in USA, Signal House Project, Washington DC, USA, [Laser Scanning for BIM Project in Baltimore, USA](#) and many more.”

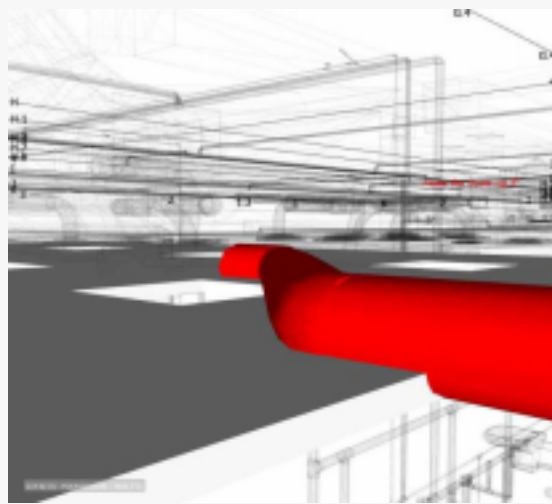
Regarding Medical Facilities Support Services (MFSS II) by the US Army Corporation of Engineers, a senior BIM Engineer of Tejy Inc. said – “In this BIM project, we faced problems as information was provided in 2D format. Our BIM Engineers created an exact 3D BIM model (LOD 350) for

MEPFP trades with available information from the client. [Revit BIM modeling](#) enabled flawless collaboration with stakeholders, minimizing errors, and improving building performance. Through Revit BIM modeling, we streamlined project information management process, including document control, resolution of design problems and clash coordination amongst MEPFP services.”

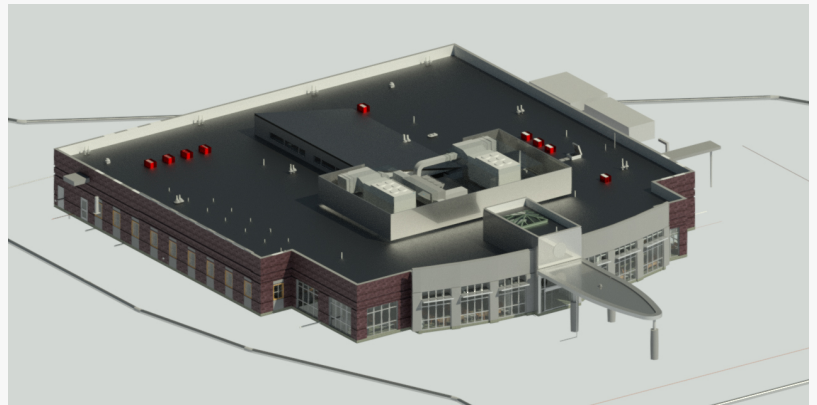
Regarding the DC Courthouse project, a Senior Project Manager, Tejjy Inc. mentioned – “Our Building Information Modeling team members faced coordination challenges in this MEP project. Coordination amongst the services involved in this project was difficult as the structure did not allow any service to pass through the beam or concrete wall unless conceived at the design development stage. Our BIM modelers ensured that the pipes and ducts could pass through cutouts in the walls and to the available space for [MEP services](#) through the designed routes with the least impact on existing services. We did this by shifting and changing service routes, considering the necessary clearance and modifying the sizes of pipes and ducts within acceptable limits.”

Sukh added that Northeast Water Purification Plant Expansion, Houston is another successful project of Tejjy Inc. He pointed out – “We faced difficulties related to Fabrication

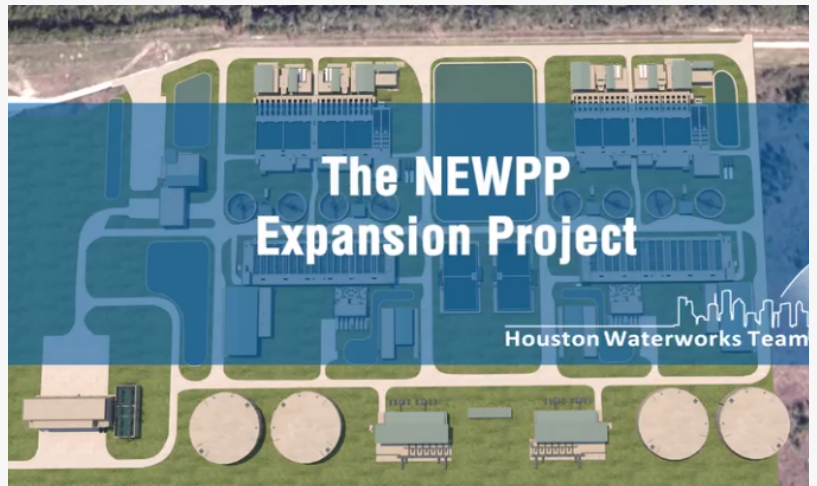
Drawings, Coordination of Pipes & Process Equipment. Our BIM engineers developed a standard for executing the fabrication work. We detected pipe clashes in the pump room using 3D BIM Model and processed equipment with the pipe. Using BIM Constructability Review, we found that



DC Court House Clash Coordination - Duct Insulation by Tejjy Inc.



Revit BIM Modeling for Medical Facilities Support Services (MFSS II)



3d Model Creation by Tejjy Inc. for North East Water Purification Plant Expansion, Houston, USA

the line & pinch valve were not updated in the model and didn't have adequate space.”

A Senior BIM Consultant of an Architectural Religious Building Project in USA discussed – “We faced minor issues related to the topography. It was challenging for us to obtain the topographic elevation labels of the surrounding areas. Our BIM engineers sent various sections of the architectural project to the client. We provided a contoured survey to

visualize the land accurately, defining the ground and boundaries. Using 3D BIM Modeling, we resolved problems with staircase, where it was clashing with the slab.”

To discuss your architectural, structural and MEPFP projects, consult Tejy Inc. BIM modeling firm in USA at 202-465-4830 or info@tejy.com.

Tejy Inc.

Tejy Inc.

+1 2405954210

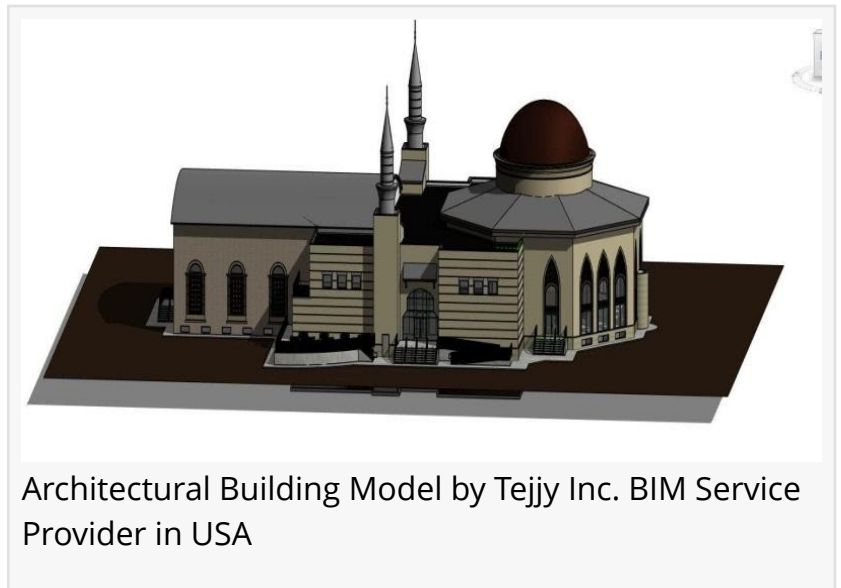
[email us here](#)

Visit us on social media:

[Facebook](#)

[Twitter](#)

[LinkedIn](#)



Architectural Building Model by Tejy Inc. BIM Service Provider in USA

This press release can be viewed online at: <https://www.einpresswire.com/article/546034724>

EIN Presswire's priority is source transparency. We do not allow opaque clients, and our editors try to be careful about weeding out false and misleading content. As a user, if you see something we have missed, please do bring it to our attention. Your help is welcome. EIN Presswire, Everyone's Internet News Presswire™, tries to define some of the boundaries that are reasonable in today's world. Please see our Editorial Guidelines for more information.

© 1995-2021 IPD Group, Inc. All Right Reserved.