

# Gary Revel Investigates the Assassination of Martin Luther King Jr.: Who Really Did It?

*Probe inspires Revel's original song, "They Slew the Dreamer," and new book, To Live or Maybe Not*

LOS ANGELES, CALIFORNIA, UNITED STATES, July 27, 2021

/EINPresswire.com/ -- The deaths of JFK, his brother Bobby and the formidable, iconic, Martin Luther King Jr. are open-and-shut cases, right? Lee Harvey Oswald, Sirhan Sirhan and James Earl Ray did it ... right?

"Not so!" writes acclaimed author Gary Revel in his new book, [To Live or Maybe Not](#), and theme song, "[They Slew the Dreamer](#)," adding that his work is "historically accurate, and an often edge of your seat, first-person, up-close account that sets the record straight."



Special investigator and author Gary Revel

Revel offers a behind the scenes look at the dramatic yet terrifying walls of the infamous Brushy Mountain Prison of East Tennessee, where he walked and talked with the much written about ("alleged") assassin of Martin Luther King Jr., James Earl Ray.

“

James told his story. The real one. The one he was afraid to tell lawyers, the FBI or anyone he thought may be connected with the government.”

*Gary Revel*

It all began in January 1977, in the law office of Jack Kershaw in Nashville, Tennessee, where Revel was asked to investigate the Martin Luther King Jr. assassination. A month later, Revel was sitting in a conference room inside the gothic looking walls of Brushy Mountain Prison, talking to James Earl Ray.

“James told his story. The real one. The one he was afraid to tell lawyers, the FBI or anyone he thought may be connected with the government,” Revel said, adding that he was operating as an

undercover special investigator. Although associated with the House Select Committee on Assassinations and Attorney Jack Kershaw, he was not working directly for anyone but himself, he explained.

Revel continued. "Jimmy knew he was a dead man if he told the truth to anyone who would get it back to the killers, or even to those associated with them. When he became a made Mafia member, in New Orleans, by the hand of Carlos Marcello, the most important thing he learned was 'Omerta,' the oath of secrecy."

What Revel said he learned — from that meeting and many others, confrontations, near death experiences of himself and family members, and murder of his brother and others — was this: James Earl Ray did not shoot and kill Martin Luther King Jr.

On April 4, 1967, MLK spoke against the Vietnam War, at the Riverside Church in New York. On April 4, 1968, King was shot dead on the balcony of the Lorraine Motel in Memphis, Tennessee. Those are the basic facts. The intrigue, danger, perplexing associations and events related to the entire matter form the essence of Revel's investigation.

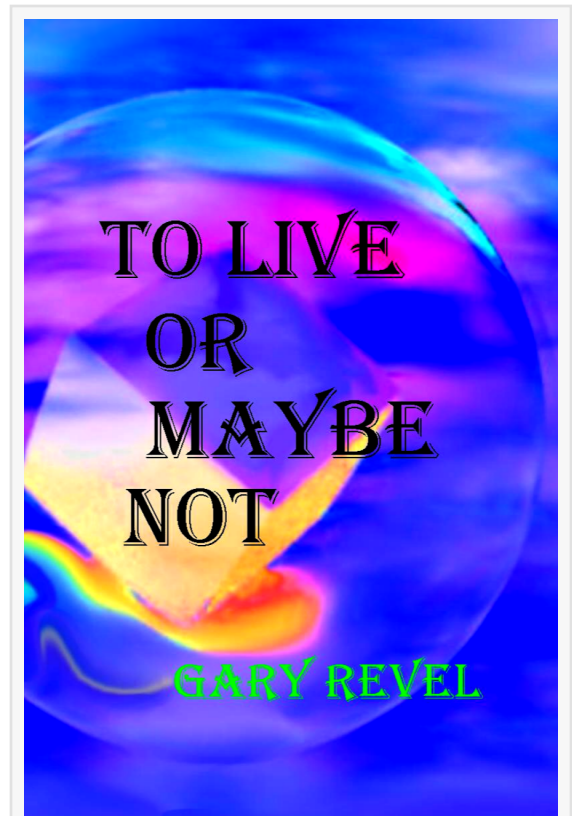
"History winces at this," Revel added. "The truth has been abused for so long. Many have died because they sought the same truth."

The House Select Committee on Assassinations, which Revel worked in association with, concluded that there were "general indications of conspiracy" in the assassination of MLK. Revel agreed but went further, saying, "James Earl Ray was not the shooter, nor was he a knowing participant in the killing."

To Live or Maybe Not is available on Amazon.com. The song, "They Slew the Dreamer," is available on iTunes and other sites. A movie, They Slew The Dreamer: MLK—The Gary Revel Story, is in development.

For more information, please visit <http://garyrevel.com/>. To hear or to download the song, "They Slew the Dreamer," please visit <https://garyrevel.com/theyslewthedreamer.html>.

Trish Stevens  
Ascot Media Group, Inc.  
+1 8323342733



In this memoir, Gary Revel shares how he came to investigate the assassination of MLK and others.

[email us here](#)

Visit us on social media:

[Facebook](#)

[Twitter](#)

---

This press release can be viewed online at: <https://www.einpresswire.com/article/547263159>

EIN Presswire's priority is source transparency. We do not allow opaque clients, and our editors try to be careful about weeding out false and misleading content. As a user, if you see something we have missed, please do bring it to our attention. Your help is welcome. EIN Presswire, Everyone's Internet News Presswire™, tries to define some of the boundaries that are reasonable in today's world. Please see our Editorial Guidelines for more information.

© 1995-2021 IPD Group, Inc. All Right Reserved.