

National Grid Improves Detection of Contamination in Gas Supplies

National Grid has published the report on a 32-month project assessing the LineVu system from Process Vision.

UNITED KINGDOM, August 5, 2021

[/EINPresswire.com/](https://www.einpresswire.com/) -- Contamination in gas networks is a global problem, causing corrosion and damage to plant and equipment with high clean-up costs. The project has validated improvements in the detection of contamination entering gas networks and demonstrated that LineVu is ready to move from research to business-as-usual equipment with plans to install systems at entry points to the UK transmission system.

LineVu brings a new approach to monitoring. It is a permanently installed camera-based system, using image processing to provide an alarm when contamination is detected, and enables access to a live video stream of pipeline activity. Implementing this technology will allow operators to make proactive, evidence-based decisions.

More effective maintenance will be possible, and the threats posed by contamination will be greatly decreased.

“

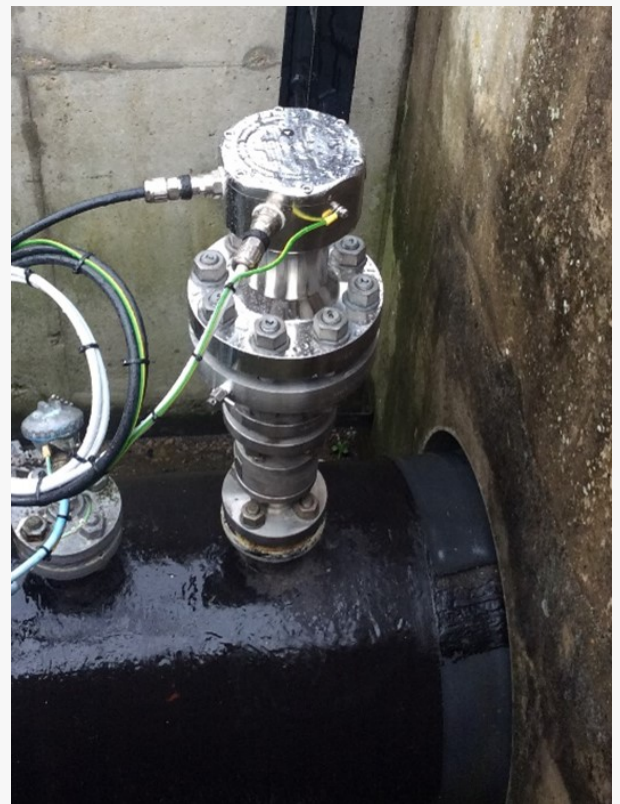
Safety is our paramount consideration.”

Paul Stockwell

It is known that liquid events can significantly increase the uncertainty of fiscal measurements, such as flow and calorific value. Limiting these events, and the knowledge gained from monitoring, can reduce these errors.

Capable of detecting all types of solid and liquid

contamination, LineVu provides pipeline operators certainty on gas pipeline contamination levels. During the National Grid project, the LineVu technology provided good validation levels using a variety of flow regimes.



LineVu installed at entry point

Gas Safety (Management) Regulations (GS(M)R) require that gas transported in the National Transmission System should not contain liquids or solids. The project raises awareness of contamination in gas flows received into the network and the industry's reliance on separator efficiency.

The LineVu technology draws attention to separators and compressors that require maintenance.

A live video stream directly to control rooms allows operators to react immediately to alarms in the same way they would if the gas was outside of specification for water vapour or H₂S.

LineVu will:

- lead to better compliance with GS(M)R;
- improve flow assurance;
- decrease operational risk;
- lead to better maintenance of asset integrity;
- act as an early warning to prevent damage to plant and instrumentation.

The National Grid report and further information on LineVu can be found at:

www.processvision.com/report

Rebecca Taylor

Process Vision Ltd

+44 1256 883304

becky.taylor@processvision.com

Visit us on social media:

[Twitter](#)

[LinkedIn](#)

This press release can be viewed online at: <https://www.einpresswire.com/article/548126504>

EIN Presswire's priority is source transparency. We do not allow opaque clients, and our editors try to be careful about weeding out false and misleading content. As a user, if you see something we have missed, please do bring it to our attention. Your help is welcome. EIN Presswire, Everyone's Internet News Presswire™, tries to define some of the boundaries that are reasonable in today's world. Please see our Editorial Guidelines for more information.

© 1995-2021 IPD Group, Inc. All Right Reserved.