

# OKW's New Smooth-Top SLIM-CASE Enclosures For OEM Handheld Electronics

*OKW's new SLIM-CASE enclosures are now available with a smooth-top for push-buttons, keypads, LEDs etc.*

BRIDGEVILLE, PENNSYLVANIA, USA, August 16, 2021 /EINPresswire.com/ -- OKW's innovative and elegant new [SLIM-CASE](#) for mobile devices is now available in a smooth-top version for installing displays, push buttons and LEDs.

Ergonomic SLIM-CASE (IP 54/65) is the new-generation handheld enclosure for mobile measuring and control applications, wireless communications, IoT/IIoT, healthcare, laboratories, offices, safety engineering and environmental technology.



SLIM-CASE with smooth top for push-buttons and keypads

SLIM-CASE underlines its aesthetic credentials with a virtually frameless, low-profile design and soft contours that enhance the ergonomics. There is plenty of space inside for PCBs, plug connectors, interfaces and sensors.



Our new SLIM-CASE is designed for the latest OEM handheld electronics."

*Sean Bailey*

In addition to the smooth-top version, there is also a 0.039" recessed top for product labels or a 0.062" recessed top for a touchscreen or membrane keypad. Each of the three variants can be specified with or without a soft-touch TPE intermediate ring for extra comfort and impact protection.

This offers a choice of six versions in total.

SLIM-CASE can accommodate inductive charging with the correct coil and NFC technology with Qi chargers. Power can be supplied by a flat battery mounted on the PCB.

The enclosures are available in one plan size (M) – 5.826" x 2.913" – and two heights: 0.748" (without TPE ring) and 0.866" (with TPE ring). Inside there are PCB mounting pillars in both the top and base.

SLIM-CASE is molded from tough, UV-stable ASA+PC-FR (UL 94 V-0) for indoor and outdoor use. For added security, the enclosures are assembled using tamperproof Torx T8 stainless steel screws. The cases' standard color is off-white (RAL 9002). Prices start at \$18.

Accessories include an IP 65 seal for cases without the TPE ring, a transparent front screen (for use with touchscreens), an adhesive foil (for securing the screen), self-tapping PCB screws and a Torx T8 screwdriver.

OKW can supply [SLIM-CASE fully customized](#). Services include custom colors for the main case and TPE ring, machining, lacquering, printing, laser marking, product labels, RFI/EMI shielding and installation/assembly of accessories.

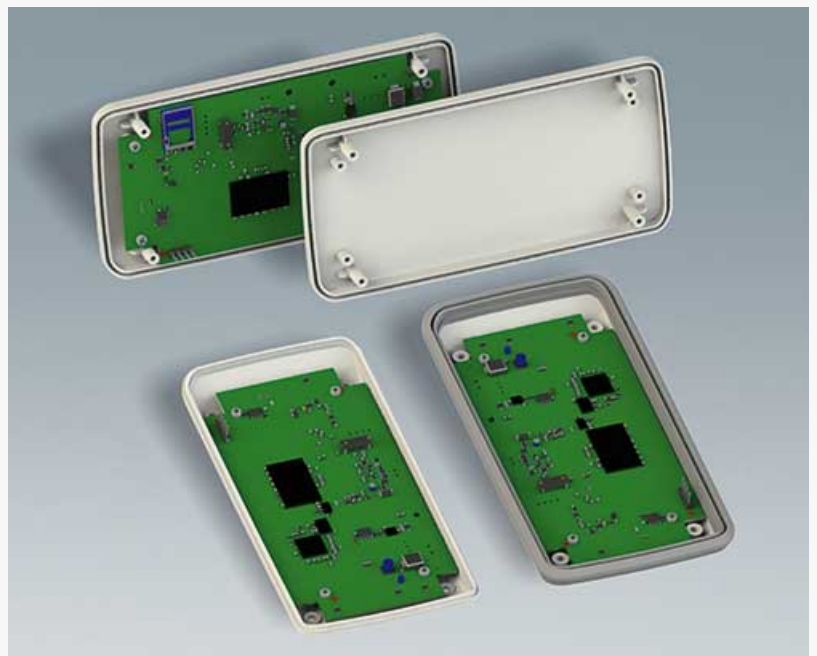
[View the full SLIM-CASE range here >>](#)

Sean Bailey  
OKW Enclosures Inc  
+1 412-220-9244  
[email us here](#)

Visit us on social media:  
[LinkedIn](#)



SLIM-CASE is also designed for mounting touch screens



SLIM-CASE has plenty of space inside for PCBs, displays, batteries etc.

we have missed, please do bring it to our attention. Your help is welcome. EIN Presswire, Everyone's Internet News Presswire™, tries to define some of the boundaries that are reasonable in today's world. Please see our Editorial Guidelines for more information.

© 1995-2021 IPD Group, Inc. All Right Reserved.