



New Panoramic View of all Digital Assets Facilitates Communication between EPCs, Clients and Suppliers

Engineering platform generates datasheets automatically for all languages, units and standards

TROY, MI 48084, USA, August 17, 2021 /EINPresswire.com/ -- From now on, communication with clients and suppliers will be greatly facilitated for plant designers and EPCs. The software provider Aucotec has developed datasheets for the latest version 2021 of its cooperation platform Engineering Base (EB), which automatically merge all information about an asset, including accessories and sub-systems. This creates a 360-degree panorama of every desired asset in no time.

Single source of truth makes it possible

"Asset 360" enables engineering professionals to have their customizable datasheet templates filled at any time for a device or entire sub-systems at the touch of a button. This only works because EB is based on a cross-disciplinary data model in which the plant is developed cooperatively. All developed objects are available and editable in this single source of truth, and each one exists once only. Asset 360 is "only" another representation of the objects – in addition to graphics, tables, lists, etc. The automatic extraction of all relevant data would be impossible if working with a chain of diverse discipline-specific tools; users would have to search for the information themselves and enter it in the usual Excel tables, which would involve a lot of tool know-how, time, effort and error potential.

Decisive means of communication

The sometimes highly complex datasheets are the decisive means of communication between plant designers, their clients and subcontractors. They document, for example, calculation results from different load conditions of a plant or parts thereof, serve as the basis for decision-

The image displays two side-by-side components from an engineering software interface. On the left is a detailed datasheet for a 'Separator' asset. The header includes 'Asset 360 Demo project' and 'AUCOTEC'. Document ID is P-2153, Job no. DS4001, Doc. no. 0, Rev. 0. Page 2 of 3, Item no. V 101. The 'Operating data' section lists parameters for 'Feed' and 'Liquid outlet' under 'Design' conditions, including temperature, pressure, flow, density, viscosity, and surface tension. The 'Mechanical data' section lists equipment location, design temperatures (min. -15 °C, max. 300 °C), design pressure (max. 1.5 MPa), inner diameter (3000 mm), and construction code (ASME Section VIII). On the right is a technical drawing of the separator vessel, showing a vertical cylindrical tank with a hemispherical head and a conical bottom. It features a liquid level indicator (A1), a vapor outlet (B), and a liquid outlet (C). Dimensions include a total height of 8300 mm, a diameter of 3200 mm, and various internal clearances and levels.

360-degree panorama of every desired asset: The new data sheets automatically merge all information about an asset, including accessories and sub-systems

making on the final design of an asset or as the basis for a tender and subsequent order and for obtaining releases.

Variety is easy

Although there are standards such as API for process engineering datasheets and ISA in the instrumentation sector, there is still an enormous variety of layouts. EPCs, in particular, must be able to handle all conceivable units, languages and design specifications. One customer expects the equipment table in the sheet's centre, another needs a graphic there; one wants it in Russian, while the next customer needs US units of measurement. Sheets with various simulation scenarios or operating conditions of entire plant areas can contain over 100 sheets full of tables and graphics. The automatic processes of Asset 360 make it easy to handle this variety, as well as the customizing of templates to different requirements and standards. By clicking, the templates are based on EB's model and always know exactly what belongs where, regardless of how the layout is configured.

Asset 360 Demo project				AUCOTEC	
Document ID		P-2153		D54001	
Job no.		Doc. no.		Rev.	
Separator		Page 2 of 3		Item no. V 101	
Operating data					
Design case		EOR			
Fluid description		Boiler feed water/steam			
Feed		Design			
Temperature		260			°C
Pressure		122,37			kg/cm ² g
Liquid flow		426105			kg/hr
Liquid density		793,26			kg/m ³
Liquid viscosity		0,1			cP
Liquid surface tension		24			dyn/cm
Liquid outlet		Design			
Temperature		325			°C
Pressure		122,37			kg/cm ² g
Liquid flow		4261			kg/hr
Liquid density		653,48			kg/m ³
Liquid viscosity		0,08			cP
Liquid surface tension		9			dyn/cm
Vapor outlet		Design			
Temperature		325			°C
Pressure		122,37			kg/cm ² g
Gas flow		421844			kg/hr
Gas density		70,88			kg/m ³
Gas viscosity		0,02			cP
Gas mole weight		18,02			kg/kmol
Mechanical data					
Equipment location		By detailed design			
Design temperature (min.)		-15	°C	Construction code	ASME Section VIII
Design temperature (max.)		320	°C	Stress relieving	According to code
Design pressure (min.)		FV	kg/cm ² g	Construction material	CS
Design pressure (max.)		35	kg/cm ² g	Corrosion allowance	1,5 mm
Inner diameter		3200	mm	Head type	Spherical

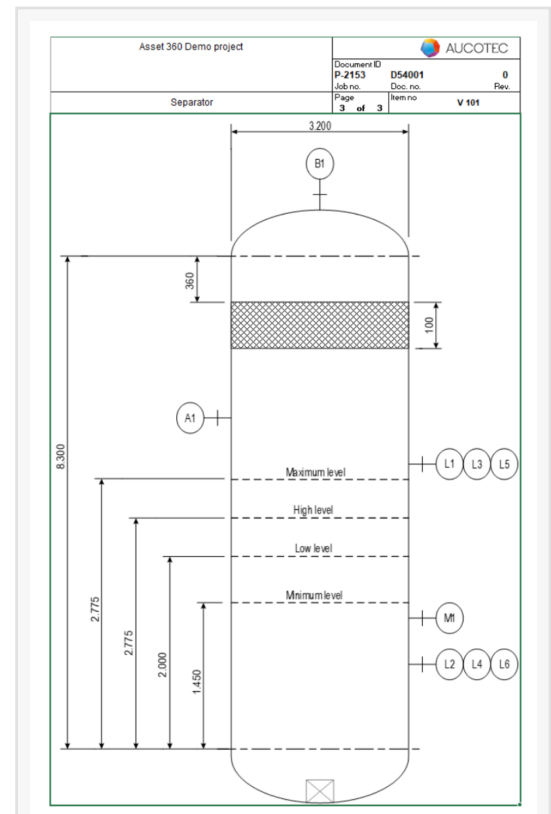
The variety of datasheet layouts is enormous. The automatic processes of Asset 360 make it easy to handle

Asset 360 will be further expanded. Changes to objects listed there should be reflected directly in EB's data model in the next level. This will make Asset 360 a user interface and the ultimate "intermediary" between EPCs, suppliers and operators. The idea for the module was developed in cooperation with a major [Danish plant developer](#). Its implementation was only possible with EB.

Background information about Aucotec

Aucotec AG has over 35 years of experience in developing engineering software for the entire lifecycle of machines, plants and mobile systems. The solutions range from flow diagrams via I&C and electrical engineering for large-scale plants to modular harness design in the automotive industry. Aucotec software is in use all over the world. In addition to its headquarters in Hanover, Aucotec operates subsidiaries in the USA, in China, South Korea, France, Italy, Austria, Poland, Sweden and Norway. A global network of partners ensures local support throughout the world.

Dr. Pouria G. Bigvand
AUCOTEC Inc.
+1 669-300-8042
[email us here](#)



Datasheets can contain over 100 sheets full of tables and graphics. The data behind is merged automatically by Asset 360 from EB as the single source of truth

This press release can be viewed online at: <https://www.einpresswire.com/article/548988338>

EIN Presswire's priority is source transparency. We do not allow opaque clients, and our editors try to be careful about weeding out false and misleading content. As a user, if you see something we have missed, please do bring it to our attention. Your help is welcome. EIN Presswire, Everyone's Internet News Presswire™, tries to define some of the boundaries that are reasonable in today's world. Please see our Editorial Guidelines for more information.

© 1995-2021 IPD Group, Inc. All Right Reserved.