

Blue Marble Geographics releases Global Mapper Pro

Replacing the Lidar Module, Global Mapper Pro expands the suite of advanced GIS tools beyond lidar analysis.

HALLOWELL, MAINE, UNITED STATES,
September 15, 2021 /

EINPresswire.com/ -- [Blue Marble Geographics](#)[®] is pleased to announce the immediate availability of [Global Mapper Pro](#)[®]. This new addition to the family of Global Mapper programs contains a suite of new professional tools accessible to GIS users at all levels.

Global Mapper Pro incorporates all of the powerful point cloud processing tools previously available in the now retired Global Mapper Lidar Module, but expands the functionality to include more terrain analysis and automated tools.



All the great features of Global Mapper are still available in the base version at an affordable price, while the advanced tools we are known for now will have a home in Pro.”

*Patrick Cunningham,
President & CEO of Blue
Marble Geographics*

Global Mapper Pro boasts tools for workflow optimization, including new automated tools for extracting breaklines from terrain and vector features from raster data based on matching or similar values. Scripting expansion includes a new Script Editor dialog for building scripts, and Python integration allowing python developers to access and use Global Mapper functions through Python scripts and environments.

In addition to the automatic point cloud classification tools, a new spectral partitioning tool segments a point cloud into distinct clusters based on a weighted analysis of point

return characteristics. A segment identifier is then applied to each connected cluster and selection by the applied segment identifiers allows for easy selection of individual features to



global mapper pro

Global Mapper Pro includes new support for python scripting, a new spectral partitioning tool, and the ability to generate vectorization from terrain and imagery.

streamline manual classification.

“The release of Global Mapper Pro is something that has quietly been in the works for years,” stated Blue Marble President Patrick Cunningham. “As lidar has become more ubiquitous along with the need for a package focused on advanced users, the time to go Pro is here. All the great features of Global Mapper are still available in the base version at an affordable price, while the advanced tools we are known for now will have a home in Pro.”

Broadening the focus of the Global Mapper advanced tools from lidar processing to more general analysis and automation opens the door for greater improvements and development freedom in the program as it continues to evolve.

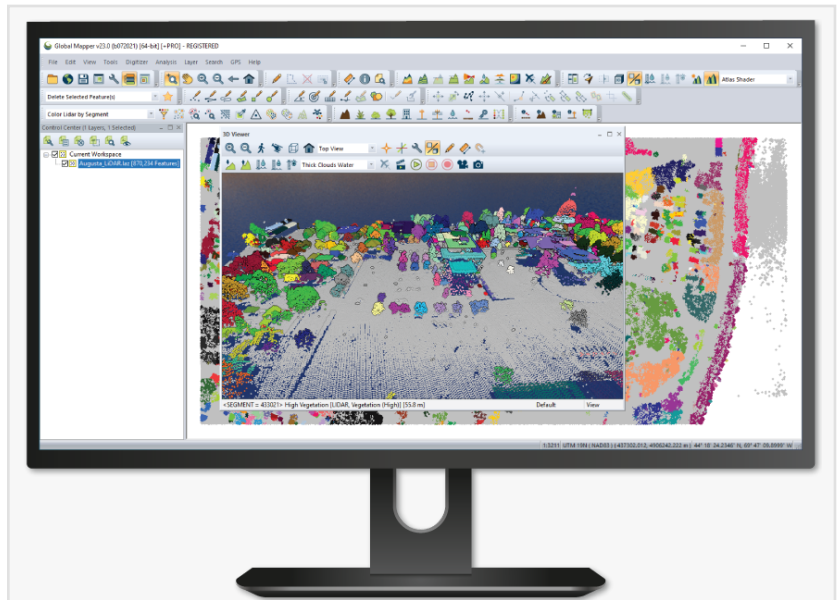
Blue Marble will be presenting a [live webinar](#) on Wednesday, October 6, to showcase Global Mapper Pro. During this hour-long presentation, scheduled to begin at 2 pm (EDT), attendees will see the program in action and will have the opportunity to ask questions about the new functionality. To register, visit:

<https://register.gotowebinar.com/register/6688541853254469389>

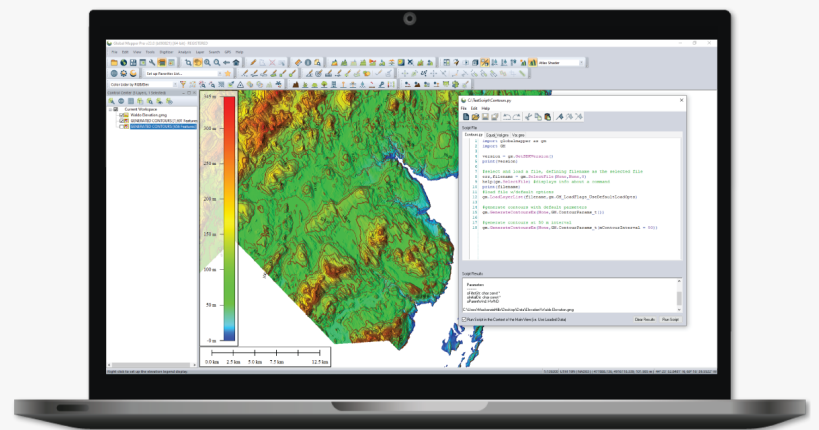
For more information about Global Mapper Pro and to download the application, visit <https://www.blumarblegeo.com/global-mapper/>.

###

As a leader in GIS and software development, Blue Marble Geographics® provides professional-grade tools to GIS users at every level. Founded in 1993, Blue Marble’s expertise spans the geospatial technology sector with particular focus on coordinate conversion and management, lidar and photogrammetric point cloud processing, and user-driven product development.



The above image displays a point cloud colored by the applied segment identifies using the spectral partitioning tool.



The image above shows a sample of a Python script file (*.py) in the Global Mapper Pro Script Editor dialog.

Blue Marble's products include Geographic Calculator®, the industry standard for precise spatial data conversion and advanced coordinate system management; Global Mapper®, an all-in-one GIS application with a comprehensive array of data processing and analysis tools; and Global Mapper Pro®, a suite of advanced tools for optimizing workflow efficiency, and processing lidar and photogrammetric point clouds from drone-captured images. All of these desktop tools are also available as software developer toolkits and libraries.

For nearly three decades, Blue Marble's products have been used and trusted by organizations around the globe — including government agencies, universities, and Fortune 500 companies. For more information visit: www.bluemarblegeo.com

Cintia Miranda

Blue Marble Geographics

+1 207-622-4622

Cintiam@Bluemarblegeo.com

Visit us on social media:

[Facebook](#)

[Twitter](#)

[LinkedIn](#)

This press release can be viewed online at: <https://www.einpresswire.com/article/551260568>

EIN Presswire's priority is source transparency. We do not allow opaque clients, and our editors try to be careful about weeding out false and misleading content. As a user, if you see something we have missed, please do bring it to our attention. Your help is welcome. EIN Presswire, Everyone's Internet News Presswire™, tries to define some of the boundaries that are reasonable in today's world. Please see our Editorial Guidelines for more information.

© 1995-2021 IPD Group, Inc. All Right Reserved.