

Satellite Data providers ConstellR and ScanWorld sign partnership for high-value agriculture data

FREIBURG, GERMANY , September 16, 2021 /EINPresswire.com/ -- Satellite data providers ConstellR and ScanWorld are set to combine their respective thermal infrared and hyperspectral imagery expertise to deliver high-value Earth Observation data to enable a wide range of sustainable agricultural applications.

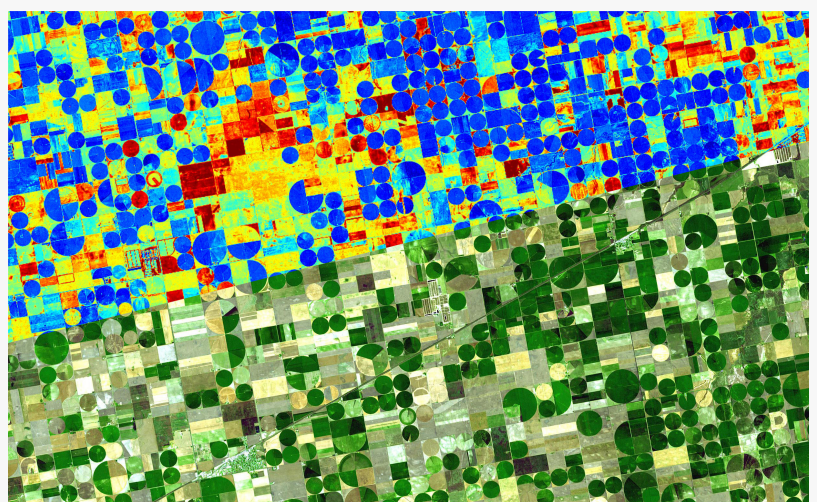
Based in Germany, ConstellR is pioneering the use of thermal infrared imagery for high-precision agriculture, crop health monitoring and sustainable resource management.

Using surface temperature as the key indicator, this data uses evapotranspiration as a fundamental measure of crop water need; critical for irrigation and yield monitoring. Critically, this data allows farmers to mitigate potential crop losses long before irreversible damage occurs.



This partnership increases our complementarity with large institutional missions such as the Copernicus program in Europe or the Surface Biology and Geology System at NASA in the US."

Max Gulde, CEO of ConstellR



ConstellR's thermal infrared imagery (top) offers an infinitely deeper measure of planetary health

Belgium-based ScanWorld is leveraging hyperspectral imaging to collect data from across the electromagnetic spectrum. This technique allows the detection of very small changes in plant physiology, allowing measurement of proteins and identification of diseases to support worldwide agriculture and forestry management.

The synergy between these two essential earth observation data sources therefore helps deliver new,

actionable insights and encourages a more efficient use of resources and increased sustainability in the sector.

The Memorandum of Understanding between ConstellR and ScanWorld will include work on the harmonisation and interoperability of data products, development of joint data products and services, as well as the potential for entering into joint commercial projects.

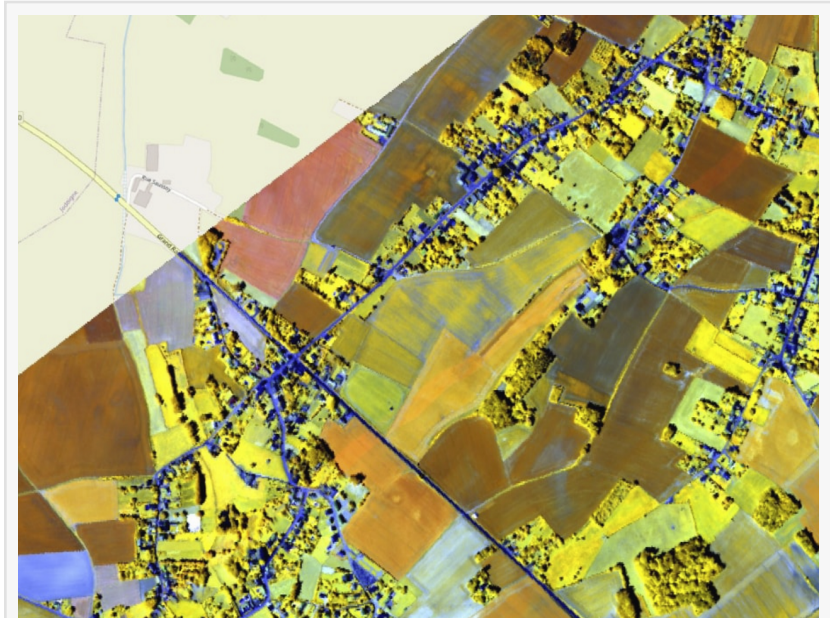
The partnership also ensures future interoperability with existing programs.

“This partnership increases our complementarity with large institutional missions such as the Copernicus program in Europe or the Surface Biology and Geology System at NASA in the United States”, says Max Gulde, CEO of ConstellR, “thus enabling us to deliver an even better service to

our customers in agriculture and beyond. In fact, I believe that what we are building here will be a game changer for all ESG related monitoring activities and enable a global quantification of key metrics with unprecedented accuracy, precision, and timeliness.”

“We both benefit from a world-class techno-scientific background” adds Gueric de Crombrugghe, ScanWorld General Manager. “This drives us towards high-quality products, which is a key requirement when it comes to delivering operational services. This is crucial in agriculture – the harvest depends on it – but in other sectors too. Combined with affordability, this is a real game-changer.”

Lara Zanoni
AstroAgency
[email us here](#)



ScanWorld’s hyperspectral imaging allows limitless identification of objects via their electromagnetic fingerprint

This press release can be viewed online at: <https://www.einpresswire.com/article/551570267>

EIN Presswire's priority is source transparency. We do not allow opaque clients, and our editors try to be careful about weeding out false and misleading content. As a user, if you see something we have missed, please do bring it to our attention. Your help is welcome. EIN Presswire, Everyone's Internet News Presswire™, tries to define some of the boundaries that are reasonable in today's world. Please see our Editorial Guidelines for more information.

© 1995-2021 IPD Group, Inc. All Right Reserved.