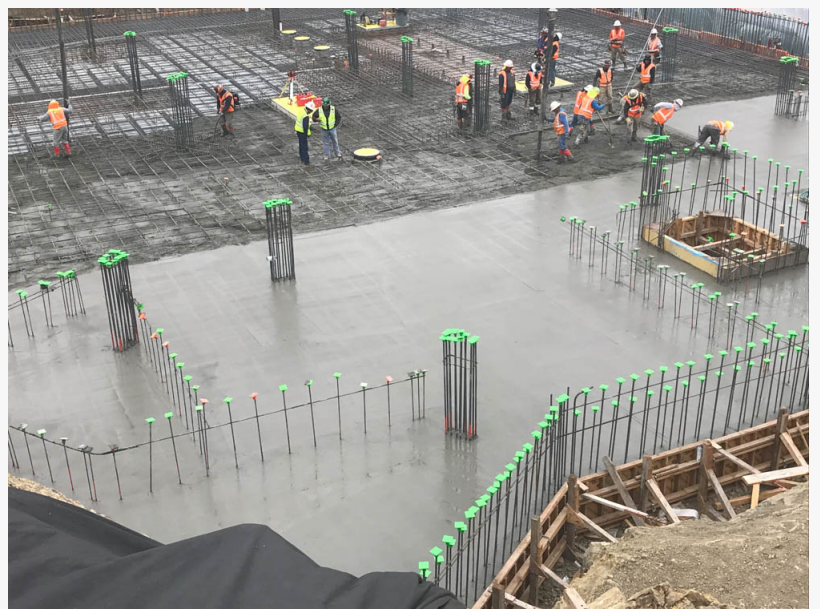


# Wafflemat Celebrates 15 Years in Hawaii

*Wafflemat Foundation Systems supports construction projects on highly expandable soils in Hawaii for over 15 years.*

IRVING, TEXAS, USA, September 24, 2021 /EINPresswire.com/ -- With October just around the corner, the Wafflemat Foundation System has passed its 15th year in Hawaii. Introduced on Oahu in October of 2006, the first installation took place in Ewa Beach where Wafflemat's monolithic ribbed slab design was chosen for its ability to compensate for common differential soil movement on the island. Since then, over 2,500 units of single-family, multi-family, and light commercial structures have used Wafflemat on not only Oahu, but also on the Maui and Kauai islands.



Builders in Hawaii Construct a Light Commercial Building with the Wafflemat Foundation System

Robin Lim, P.E., President, of Geo Labs, noted: "From a geotechnical engineering perspective, Wafflemat works well in the expansive soils found in Hawaii, and especially the clays that are so prevalent in the Kapolei area of Oahu. We have been pleased with the performance it has delivered to the projects we have worked with it and look forward to its future as the footprint grows."

“

We've been involved with Wafflemat since 2006, and participated in installing close to 1,500 units across the Islands. Our workers know the system well, and like the ease of installation it offers.”

*Doug Ewart, Branch Manager  
at Harris Steel*

Doug Ewart, Branch Manager at Harris Steel, said: "Harris has been involved with the Wafflemat since it was first introduced in Hawaii in 2006, and has participated in installing close to 1,500 units across the Islands. Our workers know the system well, and definitely like the speed and ease of installation it offers.”

For more information on the [Wafflemat System](https://www.wafflemat.com), go to [www.wafflemat.com](https://www.wafflemat.com), or call Tom Richards at 925.683.2739 or reach out via email to [Tom@Wafflemat.com](mailto:Tom@Wafflemat.com)

###

## About Wafflemat

Wafflemat, a Smart Sense Structural Systems company, is a product that has been utilized in expansive, rocky, compressible, and collapsible soil conditions since 1993. The System reduces hard dollar material costs as well as the cycle time required to develop a foundation, and is used extensively in single family, multi-family, and light commercial structures. With over 25,000,000 square feet installed and not one reported structural failure, Wafflemat continues as one of the most trusted brands in the United States.

Richard Groesch  
The LSOC  
+18175614705 ext.

[email us here](#)

Visit us on social media:

[LinkedIn](#)

---

This press release can be viewed online at: <https://www.einpresswire.com/article/552257152>

EIN Presswire's priority is source transparency. We do not allow opaque clients, and our editors try to be careful about weeding out false and misleading content. As a user, if you see something we have missed, please do bring it to our attention. Your help is welcome. EIN Presswire, Everyone's Internet News Presswire™, tries to define some of the boundaries that are reasonable in today's world. Please see our Editorial Guidelines for more information.

© 1995-2021 IPD Group, Inc. All Right Reserved.