

Structural BIM Services Transforming AEC Sector

Structural BIM service providers recognize the importance of operational work process management, reducing 15% construction cost.

WASHINGTON DC, DISTRICT OF COLUMBIA , USA, October 20, 2021 /EINPresswire.com/ -- Tejjiy Inc. facilitates AEC project stakeholders in creating virtual 3D BIM models, addressing design flaws at the pre-construction stage. The development of 3D BIM modeling services has transformed the Architectural, Engineering & Construction Industry with proper planning and coordination for successful project execution.

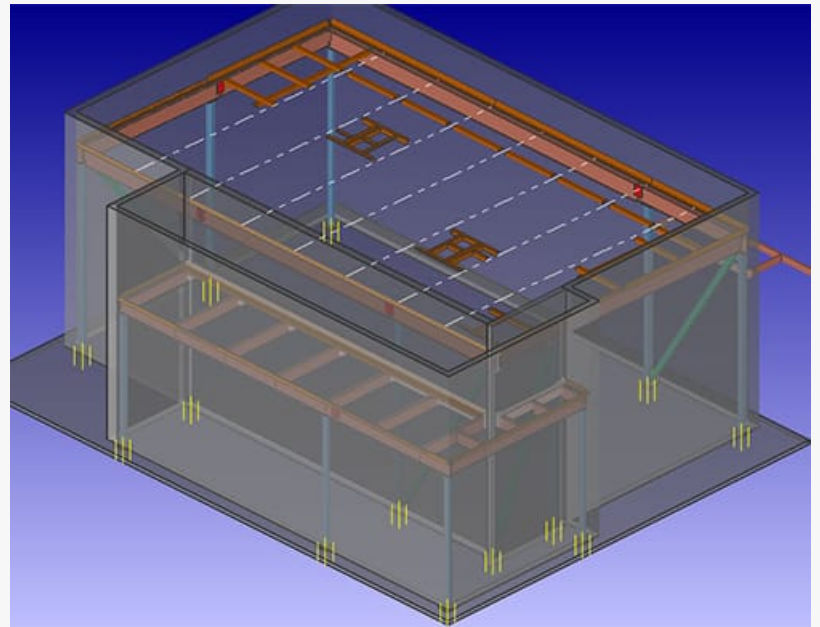
Vice President of Tejjiy Inc. with profound understanding of international building codes & processes, stated

“Structural BIM service providers recognize the importance of operational work process management. Engineers are reaping the benefits of Building Information Modeling technology in their construction workflow with 15% cost savings from successful project implementation.”

Benefits of Structural BIM Services:

BIM engineers of Tejjiy Inc. provided a detailed account of how Building Information Modeling helps in revolutionizing Structural Engineering through 3D Visualization. They explained - "BIM structural services streamline communication among project stakeholders in the architectural, engineering, and construction industries, allowing quick decision making during the pre-construction design-build stages."

Process of Working with Structural BIM Modeling:



Structural BIM

Structural BIM Modeling Transforming AEC Sector

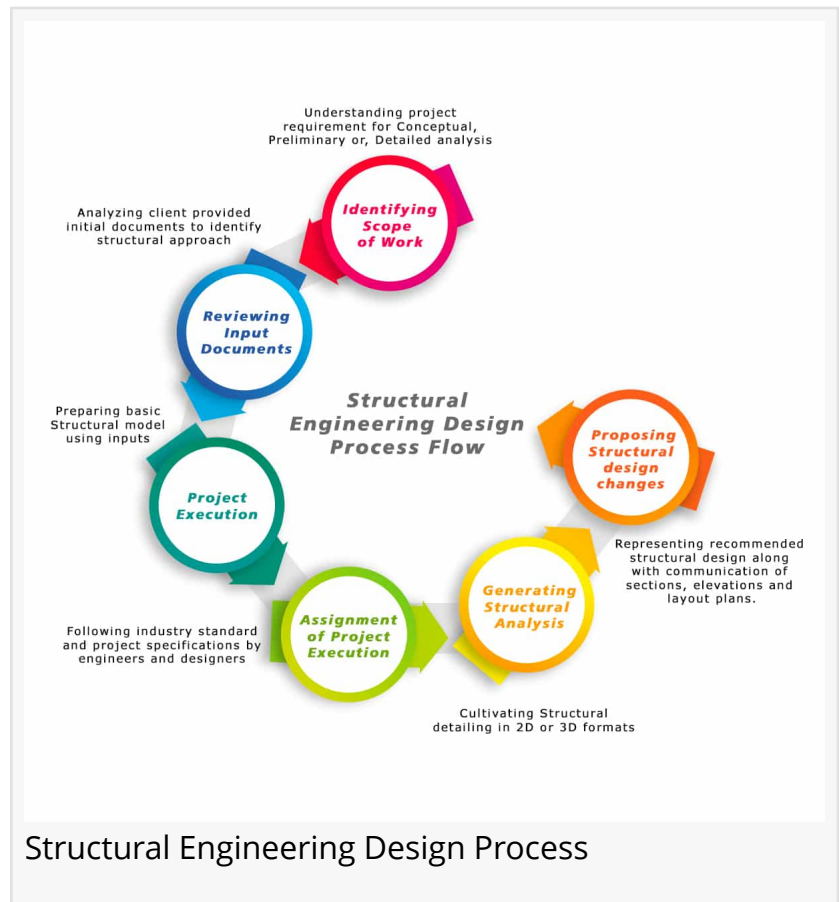
Modelers check for constructability, performance, and maintenance of structures made of wood, steel, and concrete.

They provide value-added support with design evolution from the conceptual or schematic stage to construction documentation.

Through Building Information Model, a comprehensive analysis of the building elements is made for project delivery in a risk-free environment.

Structural drawings produced by engineers enable residential and commercial works including renovations or new additions.

Bill of Materials and estimation solutions for pre-construction enhance productivity and execute constructability analysis for structural engineering firms.



Sectors Facilitated:

[Structural Engineering Services](#) facilitate various sectors, including:

“

Structural BIM service providers recognize the importance of operational work process management. Engineers are reaping the benefits with 15% cost savings from successful BIM implementation.”

Sukh Singh

- High Rise Structures
- Steel Plants
- Commercial Buildings
- Healthcare Industries
- Residential Complexes

Major Structural BIM Services:

Key BIM Services for Structural Engineering include:

- Analysis, Design Development & Coordination
- BD Modeling for Construction
- 4D Construction Simulation
- Structural Drawings/Construction Documentation

BD Quantity Take-Off/Bill of Material

Steel Structure Detailing

Digital Marketing Team of Tejy Inc. commented – "Accurate 3D Models of Wood, Steel, Concrete, Pre-Stressed & Post-Tensioned Structures from an approved set of Structural Drawings help to visualize the benefits of integrating Building Information Modeling data with business functions

including:

- Procurement
- Contract management
- Document management
- Budget evaluation
- Cost control
- Project management"

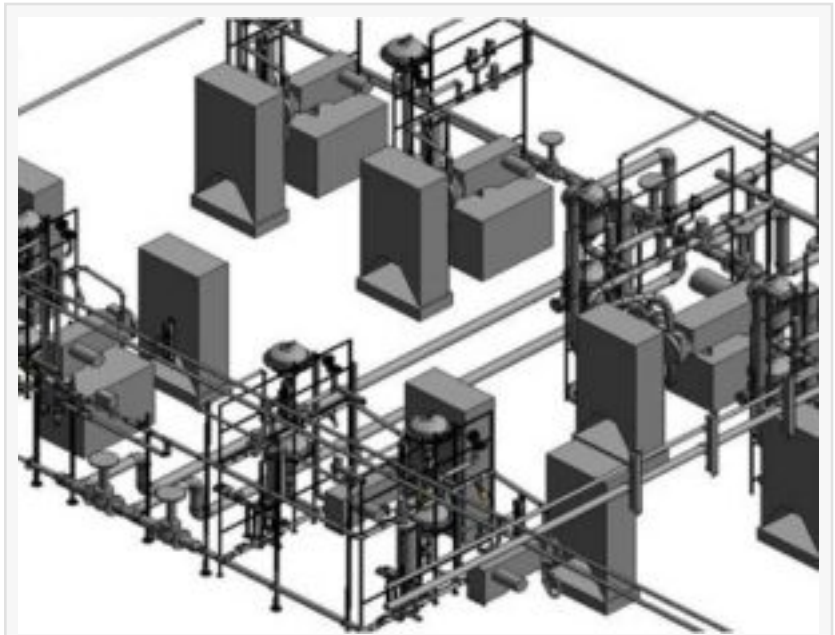
Check out more details on "[How Tejji Inc. is Revolutionizing Engineering with Structural BIM Services?](#)"

A Significant Structural BIM Case Study of Tejji Inc.:

Tejji Inc. created structural modeling for Signal House Project in Washington DC. The office building, expected to get completed by 2022 is estimated to accommodate 4,700 multifamily, serving as a new lease on work-life. The 225,000 square feet workplace, would pay homage to the ancient industrial surroundings with special metal, glass exteriors, and terracotta.

Project Vertical Served: Retail & Residential (Mixed-Use Construction)

- Start Date of BIM Implementation - 10/2019
- End Date of BIM Implementation - 04/2020



Structural BIM Coordination



Structural Fabrication Drawings

Software Used: RAM Concept from Finite Element Modeling

Scope of Work:

- BIM Modeling
- Coordination of Concrete Model
- Creation of Shop Drawings

Work Process Undertaken for the Project Execution:

- Provided BIM execution plan for model creation
- Followed protocol provided by project team members
- Used licensed subscription - AEC packages from Autodesk software

□ In-house team collaboration, with clients for project execution

Project Challenge:

□ Engineers faced a problem with reinforcement in column junction, through the concrete slab and slip fold.

Solution to the Challenge:

□ Engineers of Tejy Inc. produced a 3D BIM model, identified clashes and worked with project managers, eliminating the problem.

Problem Solving Approach:

- Collaborated with project managers
- Delivered clash-free concrete modeling
- Identified and sorted out multiple slab edge and beam errors

How did Tejy empower the owner?

□ Through Revit modeling, engineers minimized errors for this project, saving rework time, during the later stages of construction.

How did the technology help to simplify the project workflow?

□ Revit BIM technology reduced errors and produced a clash-free model at the onset of the construction, enabling smooth project execution.

Get in touch with top Structural Modelers:

To know more about Building Information Modeling Services for Structural Engineering Firm, contact Tejy Inc. at 202-465-4830 or info@tejy.com and capitalize on project decisions to improve facility design, construction & project lifecycle performance.

sukhchain singh

Tejy Inc.

+1 240-595-4210

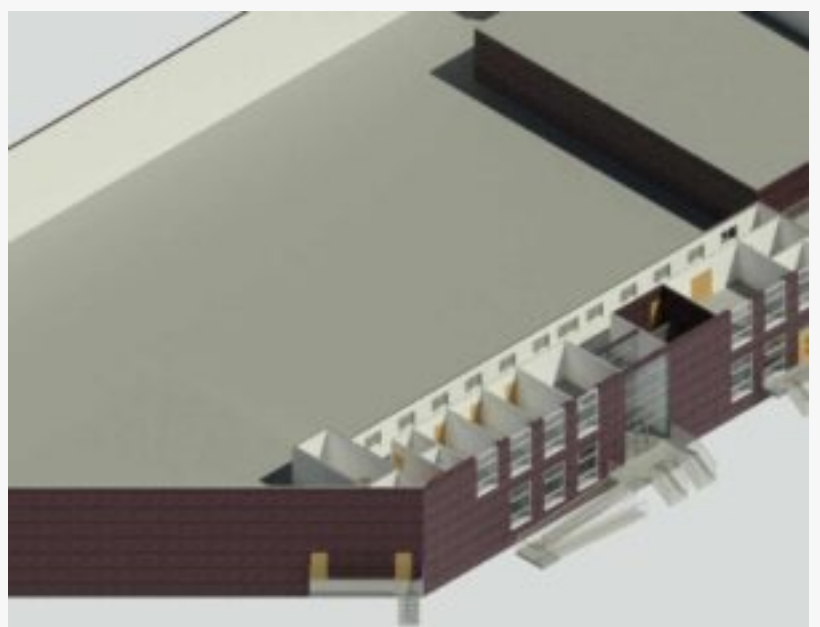
info@tejy.com

Visit us on social media:

[Facebook](#)

[Twitter](#)

[LinkedIn](#)



5D BIM Quantity Take-off for Structural Services

This press release can be viewed online at: <https://www.einpresswire.com/article/554291433>

EIN Presswire's priority is source transparency. We do not allow opaque clients, and our editors try to be careful about weeding out false and misleading content. As a user, if you see something we have missed, please do bring it to our attention. Your help is welcome. EIN Presswire, Everyone's Internet News Presswire™, tries to define some of the boundaries that are reasonable in today's world. Please see our Editorial Guidelines for more information.

© 1995-2021 IPD Group, Inc. All Right Reserved.