

MEP BIM Services – A Great Recourse for Resolving Constructability Issues

Accurate MEP BIM modeling helps design validation for constructability at pre-construction, resolving clashes for smooth construction workflow.

WASHINGTON DC, DISTRICT OF COLUMBIA , USA, February 22, 2022 /EINPresswire.com/ -- [MEP BIM Services](#) act as a great recourse to the Architectural, Engineering and Construction professionals for fast resolving constructability issues at the pre-construction stage. Top BIM service providers in USA manage varied aspects of mechanical, electrical and plumbing services with the help of Building Information Modeling. Tejjy Inc. BIM Company is not an exception

in this regard. The proficient engineers work with intelligent 3D models with several inputs like contract documentation, design document, specification sheet, equipment submittal, etc. Accurate MEP BIM modeling helps design validation for constructability, resolving clashes for smooth construction workflow.

“

Expert MEP engineers pay heed to Request for Information from Architectural, Engineering and Construction clients, resolving clashes through re-routing ducts, changing elevations & re-sizing ducts.”

Sukh Singh

minimum scope of rework.”



MEP BIM Services:

A Great Recourse for Resolving Constructability Issues

MEP BIM Services - A Great Recourse for Resolving Constructability Issues

Regarding MEP modeling services, Sukh Singh, the V.P. of Tejjy Inc. explained – "Expert MEP engineers pay heed to all Request for Information from Architectural, Engineering and Construction clients, resolving conflicts through re-routing ducts, changing elevations, and re-sizing ducts. We follow SMACNA standards and other local building codes according to project requirements. Our quality control process is as per project documentation standards and client preference. We ensure complete compliance and inspect that the MEP model is free from clashes, with

Proficient BIM MEP consultant of Tejy Inc. stated – “Comprehensive MEP shop drawings aid in installing Mechanical, Electrical and Plumbing components. All MEP drawings generated from 3D BIM Model are detailed enough to make clients comprehend the MEP work process. The drawings extracted for field automation through GPS equipment enable precise layout creation. Our BIM engineers, MEP designers and modelers work with the latest BIM software applications such as Revit, BIM 360, Navisworks and Autodesk Fabrication.”

MEP BIM Modeling Services of Tejy Inc. included:

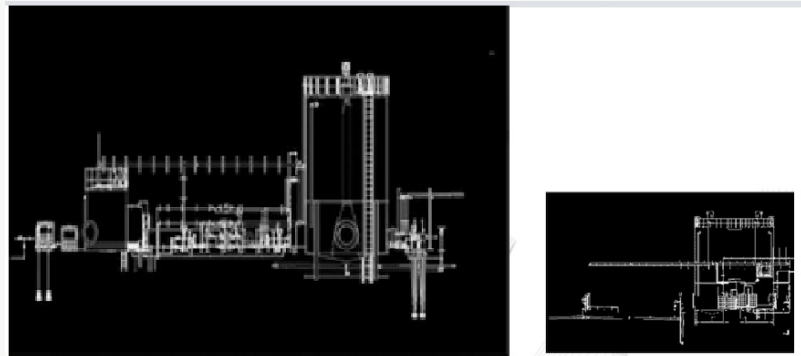
- BD model creation with constructability review
- MEP design validation
- Clash detection & Coordination
- MEP shop drawings (mechanical shop drawings, HVAC drawings & electrical drawings)
- Quantity takeoff/Bill of materials

Process of Creation

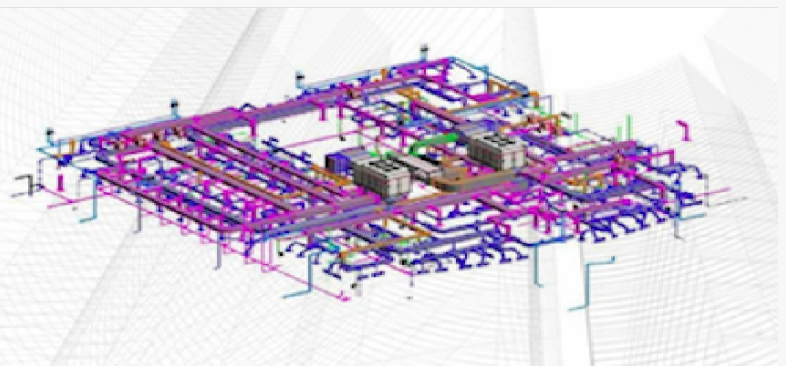
- Mechanical models are created with trapeze, hangers and seismic restrainers and coordinated with other utility sources.
- BIM modelers work with various components like ductwork, electrical fixtures, illumination, plumbing, piping, etc. and coordinate MEP services to accomplish seamless collaboration.
- The BIM model eliminates all clashes amongst mechanical, electrical and plumbing trades and verifies space allocation.
- Revit MEP services facilitate pre-fabrication of assemblies in a quality-controlled arrangement, reducing field installation time, wastage and costs.



MEP BIM Coordination Model



BIM Came Handy for Northeast Water Purification Plant

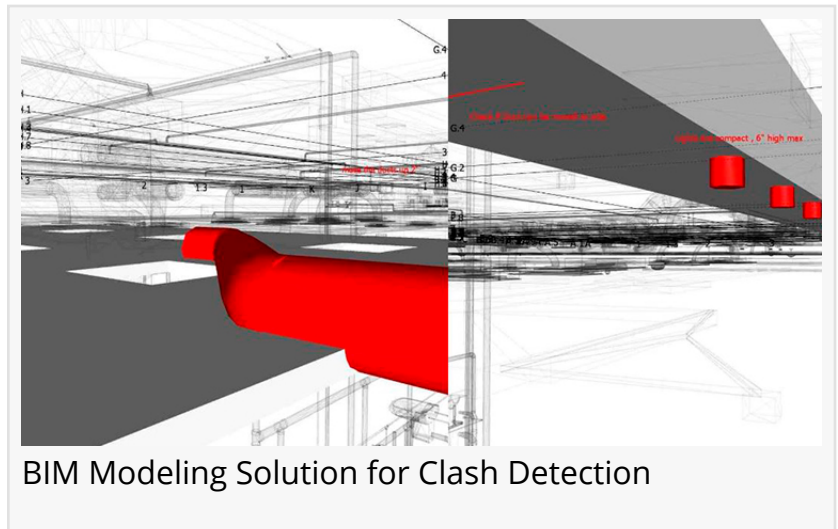


Medical Facility MEP BIM Services for the US Army Corporation of Engineers

- After validating the design at the pre-construction stage for heat load calculation, equipment selection, chilled water routing, pipe sizing, etc, all clashes get resolved and construction workflow is planned properly, saving cost and time.

- MEP coordination drawings from 3D BIM Models include sections, elevations and comprehensive drawings to facilitate on-site installation of MEP components.

- Quantity takeoff extracted from the 3D BIM Model facilitates scheduling of budget, cost, and materials required for construction.



BIM Modeling Solution for Clash Detection

MEP Shop Drawings that Enable Accurate Virtual Representation include:

- Installation Drawings
- Block-Out Drawings
- Sleeve, Insert and Hanger Drawings
- Spool Drawings
- Equipment Detailing & Pad Layout

MEP BIM Projects of Tejjy Inc.:

- Northeast Water Purification Plant Expansion (Building 213):

Value additions for the project include:

- Coordination of piping & process equipment
- Producing exact quantity of pipes & equipment for order placement
- Improved fabrication process
- Optimized operational efficiencies
- Dimension correction as per piping & instrument diagram
- Complete [information management through BIM Model](#)

- Medical Facility MEP BIM Services for the US Army Corporation of Engineers:

Value Addition for the Project Include:

- Flawless Collaboration amongst AEC stakeholders, reducing errors, improving building performance
- Quality output with less effort

□ Improved production

□ Base of access for maintenance provisions & facility management

To know more about MEP services, MEP BIM drafting services or shop drawing services, discuss your projects with the proficient BIM modelers of Tejy Inc. at 202-465-4830 or info@tejy.com. Schedule an appointment with BIM consultants of Tejy Inc. and resolve constructability issues, matching building standards and BIM codes of various locations.

sukhchain singh

Tejy Inc.

+1 240-595-4210

[email us here](#)

Visit us on social media:

[Facebook](#)

[Twitter](#)

[LinkedIn](#)

[Other](#)

This press release can be viewed online at: <https://www.einpresswire.com/article/563758394>

EIN Presswire's priority is source transparency. We do not allow opaque clients, and our editors try to be careful about weeding out false and misleading content. As a user, if you see something we have missed, please do bring it to our attention. Your help is welcome. EIN Presswire, Everyone's Internet News Presswire™, tries to define some of the boundaries that are reasonable in today's world. Please see our Editorial Guidelines for more information.

© 1995-2022 IPD Group, Inc. All Right Reserved.