

METCASE adds new Rack Shelves to its range of 19" rack accessories

New universal cantilever shelves from METCASE enable electronics equipment without built-in 19" fittings to be added to racks or cabinets quickly and easily.

BRIDGEVILLE, PENNSYLVANIA, USA, July 25, 2022 /EINPresswire.com/ -- The new [2U shelves](#) are DIN 41494 and IEC 60297-3 compliant. They are ideal for a wide range of applications including networking and communications equipment, industrial computers, sound and studio systems, laboratory instruments and industrial control.

Slots in the bottom of the C4 mild steel shelves aid in-rack ventilation. The shelves are finished in tough powder polyester paint in either anthracite (RAL 7016) or light gray (RAL 7035) as standard. There are two standard sizes – 3.47" x 19.00" x 11.02" and 3.47" x 19.00" x 15.74" – with custom sizes available on request.



METCASE 19" shelves are designed for rack mounting equipment which does not have rack mounts.



We are pleased to offer even more choice to 19" rack installation engineers."

Sean Bailey

The new shelves form part of METCASE's range of accessories. They are an alternative to METCASE's open-topped COMBIMET T aluminum 19" rack cases. Unlike the shelves, COMBIMET T has a front panel and a rear lip. It is available as standard in 2U and 3U heights (3.47" x 19.00" x 14.37" and 5.22" x 19.00" x 14.37"). The standard colors are light gray (RAL 7035) and black (RAL 9005).

METCASE's accessory range now includes the 19" cantilever shelves, 19" mounting kits, a PCB mounting kit, PCB/panel fixing screws, PCB guides, mounting plates, front panels, chassis plates (METTEC 19"), wall-mounting kits (UNIDESK), an assembly tool (UNICASE) and a wide range of case feet (including tilt-leg versions).

All METCASE enclosures can be supplied [fully customized](#). Services include bespoke sizes, custom front panels, CNC machining, fixings and inserts, painting/finishing and photo-quality digital printing of graphics, legends and logos.

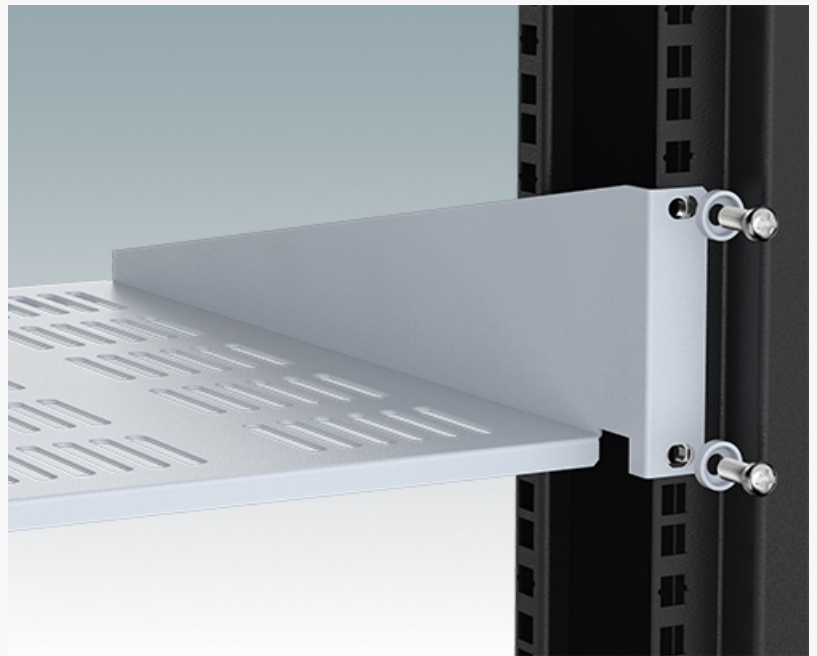
[VIEW 19" RACK SHELVES RANGE HERE](#)

>>

Sean Bailey
OKW Enclosures Inc
+1 412-220-9244
[email us here](#)



These 2U rack shelves are available in a range of colors and depths.



The rack shelves are very easy to install in the rack.

This press release can be viewed online at: <https://www.einpresswire.com/article/581798465>

EIN Presswire's priority is source transparency. We do not allow opaque clients, and our editors try to be careful about weeding out false and misleading content. As a user, if you see something we have missed, please do bring it to our attention. Your help is welcome. EIN Presswire, Everyone's Internet News Presswire™, tries to define some of the boundaries that are reasonable in today's world. Please see our Editorial Guidelines for more information.

© 1995-2022 Newsmatics Inc. All Right Reserved.