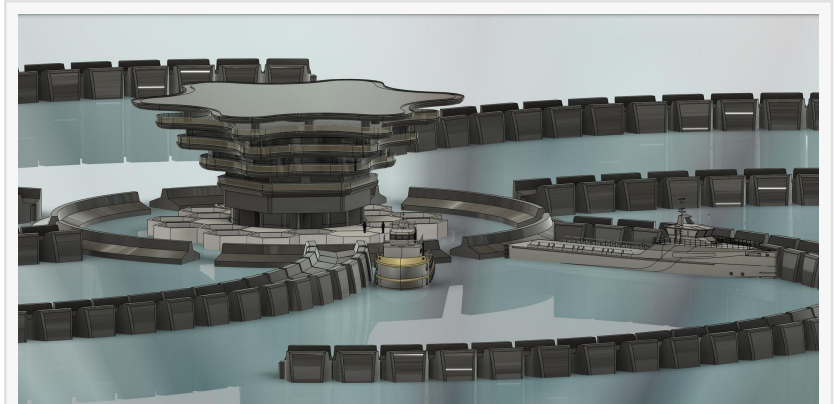


Kepler Carbon ReCapture Offers Solutions to Global Carbon Emission Challenge

A network of deep-water, ocean-based platforms for biological and physical carbon capture will lead to multi-billion-dollar markets

AUSTIN, TEXAS, USA, July 25, 2022 /EINPresswire.com/ -- Kepler Carbon ReCapture (KCR) is offering solutions to the biggest challenge facing humanity in the coming decades: Reducing the world's excess [carbon dioxide](#).



Deep water ocean platforms will capture carbon

At the heart of the Austin, TX-based company's approach is a multitude of technologies that include [carbon removal](#), monitoring, recording, and verification. KCR's team is made of a multidisciplinary group of expert scientists and researchers who are hard at work engaging this challenge.



We are aligning industry with earth's natural processes, creating a model where economic activity and sustainable atmospheric ocean carbon management will lead to multi-billion dollar markets"

Debi-Lee Wilkinson, CEO

Earth's Environmental Problem

Billions of tons of greenhouse gasses are collecting in the atmosphere and biosphere, where expanding industrialization, population growth, and rising standards of living are bringing about a risk to global civilization.

"As greenhouse gasses accumulate, oceans are warming and acidifying, while extreme weather systems are becoming more frequent, and food creation and distribution are a growing challenge," says Debi-Lee

Wilkinson, CEO for Kepler Carbon ReCapture.

Kepler Carbon ReCapture's Solutions

KCR sees a network of deep-water, ocean-based platforms for biological and physical carbon capture while protecting marine life in their vicinity. Using their self-generated, emission-free

energy, KCR uses innovative technology which extracts excess CO2 from both the air and oceans. Once extracted, CO2 is then transformed into durable carbon products as an alternative to existing carbon-based products. This, along with creating desalinated fresh water for thirsty coastal nations with marine-derived [green energy](#), addresses major economic and geopolitical issues.

“Bottom line, we are aligning industry with earth’s natural processes, creating a model where economic activity and sustainable atmospheric ocean carbon management will lead to multi-billion dollar markets,” says Wilkinson.

Mike Harris
Kepler Carbon ReCapture
+1 909-214-0477
[email us here](#)

This press release can be viewed online at: <https://www.einpresswire.com/article/582190011>

EIN Presswire's priority is source transparency. We do not allow opaque clients, and our editors try to be careful about weeding out false and misleading content. As a user, if you see something we have missed, please do bring it to our attention. Your help is welcome. EIN Presswire, Everyone's Internet News Presswire™, tries to define some of the boundaries that are reasonable in today's world. Please see our Editorial Guidelines for more information.

© 1995-2022 Newsmatics Inc. All Right Reserved.