

# Why Choosing the Best Type of WMS Matters

## *3 Different Types of Warehouse Management Systems*

LONG BEACH, CALIFORNIA, UNITED STATES, September 19, 2022 /EINPresswire.com/ -- A warehouse management system (WMS) is a software application that manages the flow of goods and information in a warehouse. The WMS will track the movements of goods, provide alerts to errors and exceptions, and generate reports on operations.

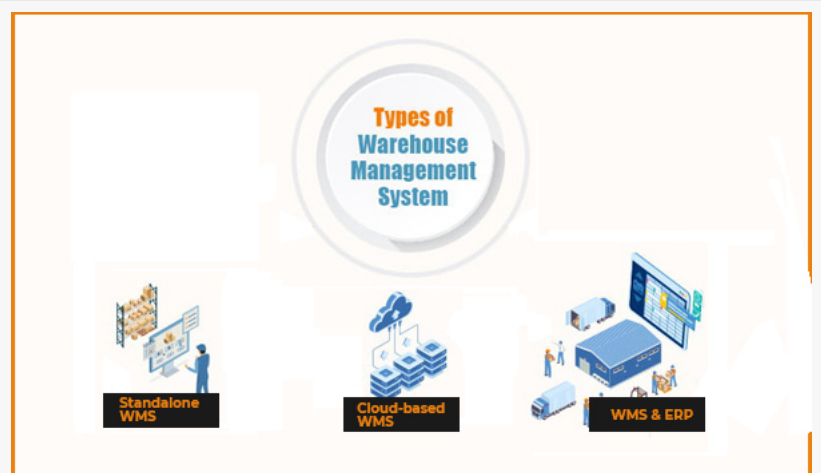
There are many reasons why a business may need a WMS. For example, it can help manage inventory levels by providing real-time visibility into your stock levels. It can also help reduce the staff required to manage a warehouse by automating the process of picking items from storage locations.

WMS has evolved over the years to become more sophisticated. It now includes features such as forecasting, inventory optimization, and demand-driven replenishment. These features can help companies save costs by avoiding overstocking or understocking their warehouses.

Choosing the right WMS is a difficult task. Many factors should be considered before making a decision. This article will discuss some factors and help a company make more informed decisions.

### 1. [Standalone WMS](#)

Standalone WMS is the most common type of warehouse management system. It is a software program that integrates all the operational aspects of a warehouse. For instance, it would



3 types of WMS



Cloud Based WMS

include order processing, inventory control, and shipping.

Standalone WMS systems are usually more expensive than open-source or cloud-based solutions, but they offer the most complete functionality for advanced warehouse operations.

Businesses can utilize standalone WMSs as a single piece of software, as an inventory control system, or in conjunction with other systems.

## 2. WMS with [ERP Module](#)

ERP-WMS is an integrated system that combines different modules: accounting, production management, warehouse management, and logistics. The system records all company activities in one place and provides information about the current state of affairs in any part of the business with just a few clicks.

It is one of the best solutions for warehouses or enterprises trying to develop and enhance their supply chain operations.

Despite not being a necessary component of an ERP module, warehouse management systems benefit greatly from its inclusion. Additionally, it's perfect for combining processes on a single platform, which may be quite advantageous for extensive supply chains.

## 3. Cloud-based

[Cloud WMS](#), also known as cloud warehouse management systems, is a type of software that helps retailers and wholesalers manage their warehouse space. A Cloud WMS can be accessed by any device with an internet connection.

A cloud WMS system is typically made up of three parts: the server, the database, and the client. The server manages all transactions and data in the system while the database stores all information. The client is usually a mobile app or a web application that provides access to the data stored on the server for users to view or edit.



Royal 4 Systems Logo

Cloud WMS is the key to the future of business. Technologies like cloud WMS allow companies to focus on their core competencies while outsourcing all other services and functions to a third party. The result is a more efficient company that can compete with the best in the industry.

When it comes to integrating the platform with current technology and supply chain processes, on-premises platforms need significantly more labor. Businesses would save money by hiring an external IT staff to handle their systems instead of an internal or external team.

Why does WMS matter?

There are several advantages to using different types of warehouse management software, including lowering total operating costs. With WMS software, businesses can manage logistics and inventory to do cycle counts, track shipments, and keep an eye on expiry dates. Through the use of barcoding, serial numbers, and RFID tags, these methods increase inventory visibility.

Through inventory tracking features, WMS improves the movement of goods both inside and outside. Additionally, there are tools for choosing, packing, slotting, delivering, and optimizing reception tasks.

The WMS should be chosen based on its features and functionality. It should also be compatible with other business systems in order to provide a seamless experience for the customer. It should also be scalable enough to grow with the company's needs.

Sales Department

Royal 4 Systems

+1 562-420-9594

info@royal4.com

Visit us on social media:

[Facebook](#)

[Twitter](#)

[LinkedIn](#)

---

This press release can be viewed online at: <https://www.einpresswire.com/article/591020416>

EIN Presswire's priority is source transparency. We do not allow opaque clients, and our editors try to be careful about weeding out false and misleading content. As a user, if you see something we have missed, please do bring it to our attention. Your help is welcome. EIN Presswire, Everyone's Internet News Presswire™, tries to define some of the boundaries that are reasonable in today's world. Please see our Editorial Guidelines for more information.

© 1995-2023 Newsmatics Inc. All Right Reserved.