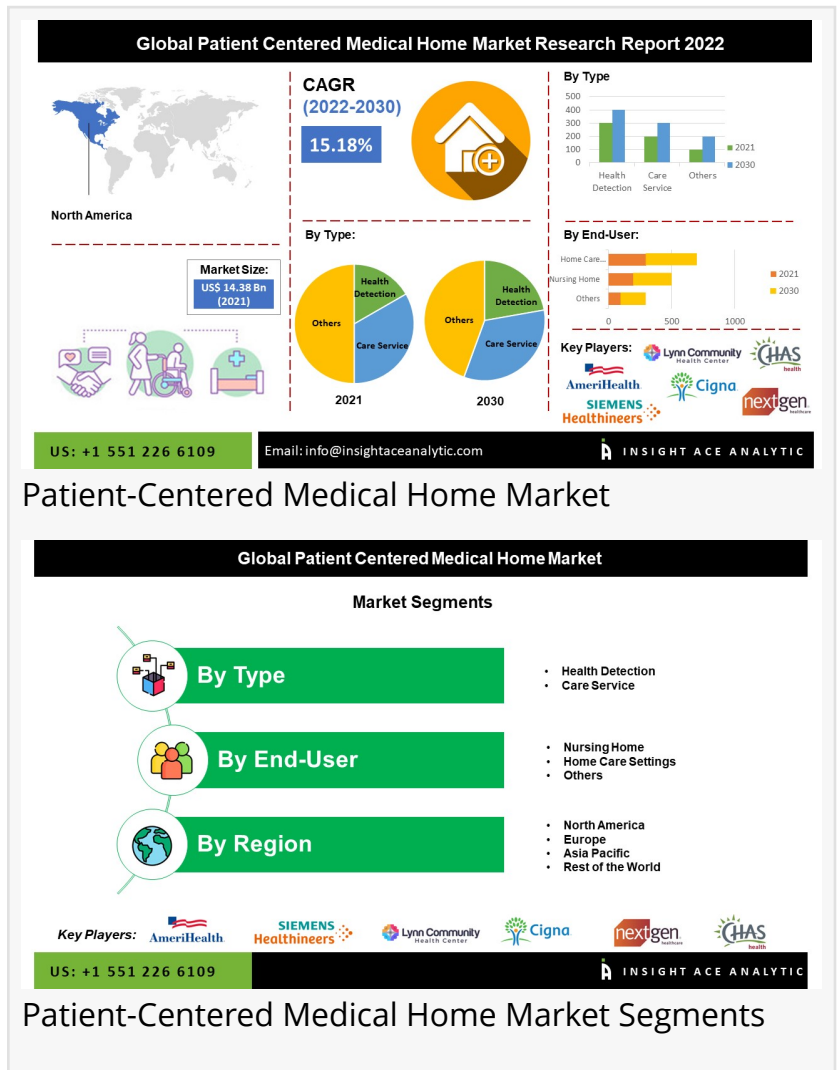


Patient-Centered Medical Home Market 2023 | Care Services Segment Witnessed Growth at a Rapid Rate

Patient-Centered Medical Home Market in 2021 is valued at 14.38 billion & is predicted to reach 50.46 billion by the year 2030 at an 15.18% CAGR from 2022-2030

JERSEY, NJ, US, January 26, 2023 /EINPresswire.com/ -- Insight Analytics Pvt. Ltd. announces the release of a market assessment report on the "Global [Patient-Centered Medical Home Market](#) (By Fiber Type (Biodegradable, Nonbiodegradable), Fabric Type (Woven, Non-woven), Application (Non-implantable, Surgical Sutures),)- Market Outlook and Industry Analysis 2030"

The global patient-centered medical home market is estimated to reach over USD 50.46 billion by 2030, exhibiting a CAGR of 15.18% during the forecast period.



Download Free Report Sample Copy @ <https://www.insightaceanalytic.com/request-sample/1438>

The patient-centered medical home (PCMH) is a model of care in which the patients have a close relationship with a chosen healthcare professional who manages a collaborative relationship of healthcare specialists, assumes collective responsibility for the patient's fully implemented care, and advocates for and specifies the location of adequate treatment with other supports timely

and support networks as necessary. One of the key aspects driving the market's expansion is the possibility for patient-centered medical home services to increase efficiency while offering medical care and reducing medical costs. The need for patient-centered medical home services is increasing globally due to various variables. Recently, government organizations have intensified their efforts to help the healthcare industry.

The inadequate uptake of medical home services in important emerging nations is restricting the growth of the patient-centered medical home market. The idea significantly impacts primary care given to patients of all ages, and it is anticipated that this would lead to a rise in demand for medical home services. Because they are designed to improve the effectiveness of care following the patient's wishes, medical home services are growing. Another objective of the medical home services market research is to foster strong relationships between patients, the healthcare professional, and the patient's family. This objective is anticipated to boost medical home service sales throughout the projected year. The slow adoption of medical technology restricts the expansion of the patient-centered medical home market.

List of Prominent Players in the Patient-Centered Medical Home Market:

Aetna
AmeriHealth
Lynn Community Health Center
CHAS Health, Cigna
Siemens Healthcare GmbH
NextGen Healthcare
Athena Healthcare
NextStep Solutions
Genpact Limited

Market Dynamics:

Drivers-

Significant potential prospects are envisaged in the market for patient-centered medical homes. One of the main drivers of the market's rise is the increasing adoption of patient-centered medical home services in these countries. Additionally, the expanded market in the following years will be aided by the increased global awareness of these services. The idea significantly impacts the primary care given to patients of all ages, which is anticipated to increase demand for medical home services. Due to their increased focus on maximizing patient care efficiency, medical home services are becoming more and more popular. Furthermore, the medical home services market research aims to strengthen the relationship between patients, medical staff, and patient's families, which is projected to boost sales of medical home services throughout the forecast year.

Challenges:

The patient-centered medical home industry's growth is constrained by the slow uptake of medical home services in significant emerging nations. The critical difficulty is a requirement for more product commercialization and marketing in developing countries, which is expected to impede the market's growth for patient-centered medical homes. The high cost and limited supply of patient-centered medical homes are anticipated to hamper the market's overall increase in the years to come.

Regional Trends:

The North American patient-centered medical home market is anticipated to generate significant revenue soon and expand at a rapid CAGR. The region's thriving healthcare sector and the local population's increasing readiness to employ the home services model are what have led to this dominance. Besides, the Asia Pacific region is the largest market for patient-centered medical home services. It is projected that this area will experience the market's fastest increase due to its growing awareness of and adoption of patient-centered medical home services.

Enquiry Before Buying: <https://www.insightaceanalytic.com/enquiry-before-buying/1438>

Recent Developments:

- In June 2021, JSW Cement Limited entered the construction chemicals sector with a new range of green products that consume less water during usage. It replaces river sand in the concrete pouring process with screening residues, thereby protecting natural resources and helping to prevent landslides, floods and air pollution.

Segmentation of Patient-Centered Medical Home Market-

By Type:

- Health Detection
- Care Service

By End User:

- Nursing Home
- Home Care Settings
- Others"

By Region-

North America-

- The US
- Canada
- Mexico

Europe-

- Germany
- The UK
- France
- Italy
- Spain
- Rest of Europe

Asia-Pacific-

- China
- Japan
- India
- South Korea
- South East Asia
- Rest of Asia Pacific

Latin America-

- Brazil
- Argentina
- Rest of Latin America

Middle East & Africa-

- GCC Countries
- South Africa
- Rest of Middle East and Africa

Get Customization on Report @ <https://www.insightaceanalytic.com/customisation/1438>

About Us:

InsightAce Analytic is a market research and consulting firm that enables clients to make strategic decisions. Our qualitative and quantitative market intelligence solutions inform the need for market and competitive intelligence to expand businesses.

Priyanka Tilekar

Insightace Analytic Pvt. Ltd.

+1 551 226 6109

[email us here](#)

This press release can be viewed online at: <https://www.einpresswire.com/article/613441547>

EIN Presswire's priority is source transparency. We do not allow opaque clients, and our editors try to be careful about weeding out false and misleading content. As a user, if you see something we have missed, please do bring it to our attention. Your help is welcome. EIN Presswire, Everyone's Internet News Presswire™, tries to define some of the boundaries that are reasonable in today's world. Please see our Editorial Guidelines for more information.

© 1995-2023 Newsmatics Inc. All Right Reserved.