

ESFI Releases Updated Workplace Safety Statistics

Each year ESFI collects and publishes workplace electrical fatalities data covering incidents from the previous year.

ARLINGTON, VA, USA, January 31, 2023 /EINPresswire.com/ -- Each year, the Electrical Safety Foundation International (ESFI) collects information on fatal occupational electrical injuries using the U.S. Bureau of Labor Statistics (BLS) Census of Fatal Occupational Injuries (CFOI) and Survey of Occupational Injuries (SOII). ESFI then publishes the information in tabular and graphical form to esfi.org. The most recent data covers the 11 years from 2011 to 2021.

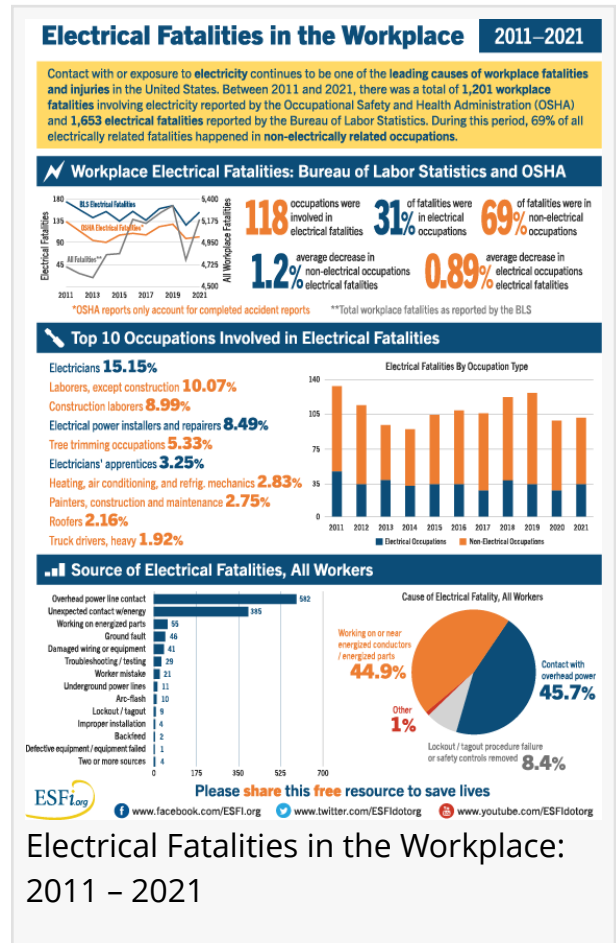
Contact with or exposure to electricity continues to be one of the leading causes of workplace fatalities and injuries in the United States. Between 2011 and 2021, there was a total of 1,201 workplace fatalities involving electricity reported by the Occupational Safety and Health Administration (OSHA) and 1,653 electrical fatalities reported by the Bureau of Labor Statistics. During this period, 69% of all electrically related fatalities happened in non-electrically related occupations. The data high points are as follows:

Workplace Electrical Fatalities, OSHA and BLS, 2011 – 2021

- 118 occupations were involved in electrical fatalities
- 31% of occupations were electrically related occupations
- 69% were non-electrical occupations

Top 10 Occupations Involved in Electrical Fatalities, 2011 – 2021

- Electricians*: 15.15%
- Laborers, except construction: 10.07%
- Construction laborers: 8.99%



Electrical Fatalities in the Workplace: 2011 – 2021

- Electrical power installers and repairers*: 8.49%
- Tree trimming occupations: 5.33%
- Electricians' apprentices*: 3.25%
- Heating, air conditioning, and refrig. mechanics: 2.83%
- Painters, construction and maintenance: 2.75%
- Roofers: 2.16%
- Truck drivers, heavy: 1.92%

(*Electrical occupations)

Source of Electrical Fatalities, All Workers

- Overhead power line contact: 582 fatalities
- Unexpected contact with energy: 385 fatalities
- Working on energized parts: 55 fatalities
- Ground fault: 46 fatalities
- Damaged wiring or equipment: 41 fatalities
- Troubleshooting / testing: 29 fatalities
- Worker mistake: 21 fatalities
- Underground power lines: 11 fatalities
- Arc-flash: 10 fatalities
- Lockout / tagout failure: 9 fatalities
- Improper installation: 4 fatalities
- Backfeed: 2 fatalities
- Defective equipment / equipment failed: 1 fatality
- Two or more sources: 4 fatalities

Cause of Electrical Fatality, All Workers

- Contact with overhead power lines: 45.7%
- Working on or near energized conductors / energized parts: 44.9%
- Lockout / tagout procedure failure or safety controls removed: 8.4%
- Other: 1%

ABOUT ESFI

ESFI is a 501(c)(3) non-profit organization dedicated to promoting electrical safety at home and the workplace. For more information and to use ESFI's free resources throughout your community, visit esfi.org.

###

Brianne Deerwester

Electrical Safety Foundation International

+1 703-841-3295

[email us here](#)

Visit us on social media:

[Facebook](#)

[Twitter](#)
[LinkedIn](#)
[YouTube](#)

This press release can be viewed online at: <https://www.einpresswire.com/article/614415707>

EIN Presswire's priority is source transparency. We do not allow opaque clients, and our editors try to be careful about weeding out false and misleading content. As a user, if you see something we have missed, please do bring it to our attention. Your help is welcome. EIN Presswire, Everyone's Internet News Presswire™, tries to define some of the boundaries that are reasonable in today's world. Please see our Editorial Guidelines for more information.

© 1995-2023 Newsmatics Inc. All Right Reserved.