

EGroupware 23.1 released

New version with working time tracker, file quotas and OAuth authentication for Microsoft 365 and Gmail

KAISERSLAUTERN, GERMANY, March 15, 2023 /EINPresswire.com/ -- [EGroupware](#) GmbH releases version 23.1 of the groupware solution of the same name.

In addition to a new work time tracker, the new version supports file quotas for users and groups as well as OAuth authentication for Microsoft 365 and Gmail. Furthermore, [EGroupware 23.1](#) contains several small improvements and new functions for some modules.

Work Time Recording and Project Timer

On September 13, 2022, the German Federal Labour Court (Bundesarbeitsgericht, BAG) ruled that employers in Germany are required to provide a system for recording working hours in the future. EGroupware customers do not have to set up or buy a new solution for this—the

“

These future-proof technologies ensure that our software will still be up-to-date in five years.”

Ralf Becker, founder and managing partner of EGroupware GmbH

recording of working hours is already integrated in version 23.1. Immediately after logging in, users see a dialog in which they can start their working time. All it takes is one click, and the time tracker runs discreetly in the background.

The button for the stopwatch is located at the top right of the menu, just next to the search function. A click on it opens a dialog for pausing, resuming and stopping the working time. There is another timer for project-related

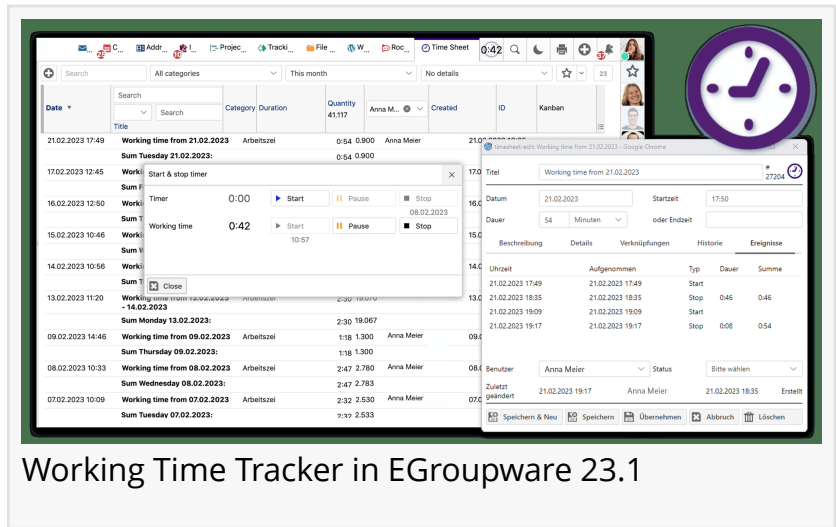
work here. Both timers cooperate with the EGroupware timesheet. The project timer also integrates with other EGroupware modules; users can launch it from the ticketing system or the

The image displays the EGroupware 23.1 interface. At the top, a blue banner features the EGroupware logo and the text "SMART ONLINE OFFICE NEW VERSION 23.1". Below this, the main interface is titled "EGroupware Version 23.1 released". The interface shows a Kanban board with four columns: "Neu", "In progress", "Erledigt", and "Mail Follow up". Each column contains several task cards with details like company names, contact information, and status. The left sidebar includes navigation options like "Favoriten", "Projekt Teambuilding", "Customer Appointments", "Customer Support", "Kundenbindung", "Aktuelle Ansicht als Favorit", "Kanban Menü", "E-Mail", "Kalender", "Adressbuch", "InfoLog", "Ressourcen", "Stundenzettel", "smallPART", and "Datenmanager". The top navigation bar includes "E-Mail", "Adressbuch", "Kanban", "Datenmanager", and "InfoLog".

project manager, for example.

The groupware solution will prompt the user if the time recording runs for an unusually long time. Both timers also support the subsequent editing of entries. EGroupware marks such records as modified.

New features for the Mail Client and File Manager



The EGroupware mail client looks tidier and clearer in its three-column view. In addition, there is a new mail address widget. It transfers data from messages to the address book and opens the CRM view by clicking on the avatar. Also new in the mail app: users can open, read and edit attached office documents directly in Collabora Online in the web browser.

The developers also introduce a new feature which is especially useful for administrators of large environments with many user accounts. EGroupware 23.1 adds a quota in the file manager and thus limits the storage space for individual accounts or groups. The file manager now also provides information about newly uploaded files.

OAuth for Microsoft 365 and Gmail

OAuth authentication enables users to authorize an application to access their own data at another service. This eliminates the need for password authentication. EGroupware 23.1 supports OAuth authentication for Microsoft and Google Mail accounts; the password is no longer stored in EGroupware. A wizard provides support during the setup.

Web Components and Lit

EGroupware 23.1 has a completely revised code base. The developers have mainly modernized the functions and features implemented in JavaScript. They now rely on Web Components and the Lit library. Web Components are code blocks which group the inner structure of HTML elements including CSS and JavaScript. This creates reusable, standardized UI components which can be used independently of the framework. As a result, code can be reused in any number of places. Lit is a fast and lean framework for creating web components. Among other things, it ensures that only components which have actually been changed are passed on to the browser.

"These future-proof technologies ensure that our software will still be up-to-date in five years," says Ralf Becker, founder and managing partner of EGroupware GmbH.

All these changes in the background make the interface more user-friendly. The fields and labels in the dialogs of the EGroupware modules are better aligned. The CSS Flexible Box Layout (CSS Flexbox for short), which has arrived together with Lit, is responsible for the clearer structures. This makes it much easier to create variable and responsive layouts, because CSS Flexbox arranges the elements on two axes (horizontal and vertical) within a box.

New Features and Functions

The developers have also improved the widgets and icons. EGroupware now uses the SVG format for more graphical elements. Adjusting the font size is an important step towards accessibility and paves the way for the planned screen reader support.

The mobile view now supports drag & drop, which simplifies working with the Kanban board on a tablet, for example. In the import dialogs, users can now define a different owner. All modules can activate a Kanban column—so it is obvious to which Kanban board a ticket, project, contact, or task belongs.

About EGroupware

EGroupware GmbH from Kaiserslautern develops the groupware solution of the same name. The Open Source software seamlessly integrates other Open Source components such as an online office into its own web interface. EGroupware runs either on-premises or in a German cloud. Birgit and Ralf Becker's team has been providing professional support for EGroupware for over 10 years. Integrative, flexible and safe: Online collaboration software made in Germany.

Birgit Becker

EGroupware GmbH

+49 4963 1316570

[email us here](#)

Visit us on social media:

[Facebook](#)

[Twitter](#)

[LinkedIn](#)

[YouTube](#)

This press release can be viewed online at: <https://www.einpresswire.com/article/622325081>

EIN Presswire's priority is source transparency. We do not allow opaque clients, and our editors try to be careful about weeding out false and misleading content. As a user, if you see something we have missed, please do bring it to our attention. Your help is welcome. EIN Presswire, Everyone's Internet News Presswire™, tries to define some of the boundaries that are reasonable in today's world. Please see our Editorial Guidelines for more information.

