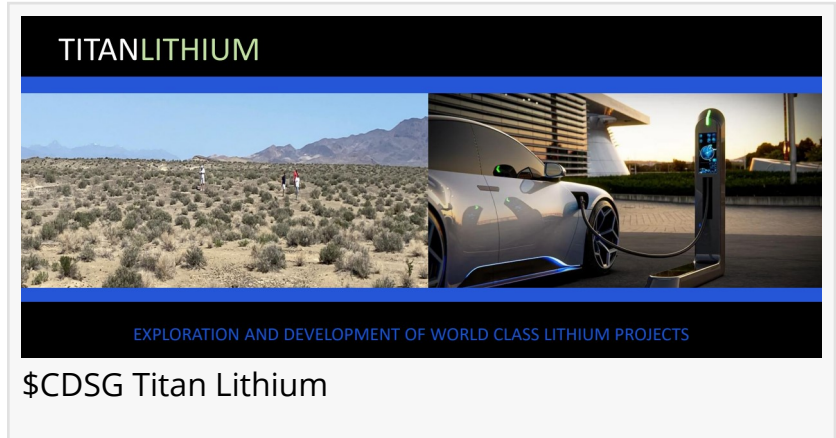


Economic Initiatives will Benefit Lithium Mining Projects in Tanzania : Titan Lithium, Inc. (Stock Symbol: CDSG)

Economic Initiatives will Benefit Lithium Mining Projects in Tanzania; \$CDSG also Developing Nevada Property for High-Value Resources: CDSG

LAS VEGAS, NEVADA, UNITED STATES, April 5, 2023 /EINPresswire.com/ -- Economic Initiatives will Benefit Lithium Mining Projects in Tanzania; \$CDSG also Developing Nevada Property for High-Value Resources: [Titan Lithium, Inc. \(Stock Symbol: CDSG\)](#)



□ Lithium Mining & Natural Resource Projects in Tanzania and Nevada.



CDSG is our lithium resource holdings company and BRLL is our technology company. Management of both companies is very excited to continue the announcements of advancements in Lithium resources,"

Harp Sangha, President of CDSG

- Company Set to Benefit from New Economic Initiatives Being Launched Between US and Tanzania.
- Latest Geochemical Samples from Tanzania Project Showed New Positive Lithium Results and Averaged 4,600 ppm Lithium.
- Current Project Extends Large South Lithium Zone 2.5 KMS West with High-Grade Results.
- WEL Project in Nevada is Comprised of 24 Unpatented Lode Claims.

Titan Lithium, Inc. ([OTC: CDSG](#)) is an emerging company based in Nevada. The CDSG principal activity is acquiring and developing opportunities in the natural resource sector and complementary technologies.

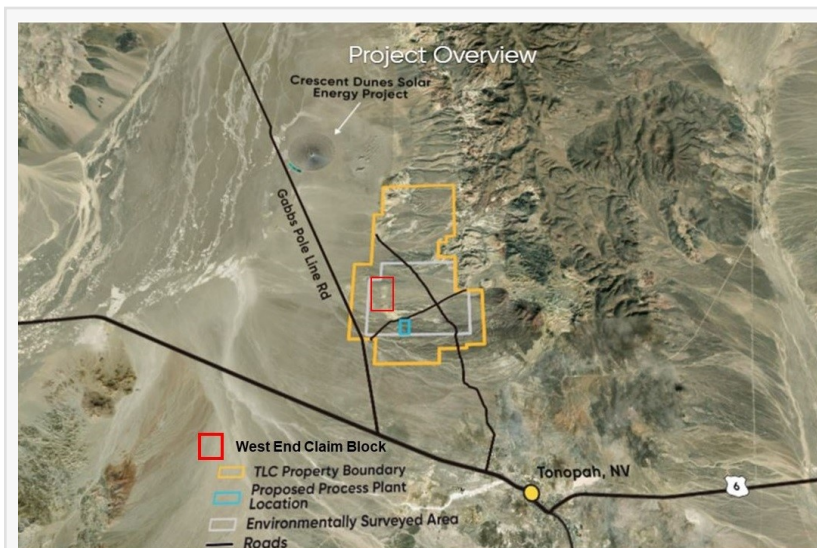
Craig Alford, MSc, PGeo, and CEO of CDSG, a Qualified Person under NI 43-101, noted "The results from the initial geochemical sampling are staggering. The size and strength of the Lithium anomaly at Titan 1 are particularly exceptional as it is within an area that has had no previous exploration and both sample lines ended at their northern limit within some of the highest grades of up to 2.79% Li₂O. These very strong results are being followed up by ongoing sampling and exploration on the Titan 1 Project area." More results will be announced in the coming weeks.

Rigorous Quality control of the samples was maintained and all samples were prepared and analyzed at the independent and ISO 9001-certified African Minerals and Geosciences Centre (AMGC) in Dar es Salaam, Tanzania.

As part of the work on our largest Project, Titan 1, two lines of surficial geochemical soil surveys were collected over a section of the nearly 115 square miles (300 sq km) central Prospecting License ("PL"). The lines were run approximately Northwest-Southeast and spaced 3 km apart.

Results from both lines returned very high Lithium values over extensive distances, two zero values were returned from each line, however, the positive geochemical results indicated lithium values ranging from 100 ppm to highs of 13,000 ppm with average values of 0.55% Li₂O (2,569ppm Li) over 7.4 miles (12 km) for the westernmost line and 1.14% Li₂O (5,300ppm Li) over 3.7 miles (6 km) for the eastern line. Values for sodium, potassium, and magnesium broadly mirror and confirm the distribution of the anomalous lithium values. Potassium oxide (K₂O) values ranged as high as 3.6% in the results.

The Titan 1 PL is centered over a vast, sparsely vegetated, flat-lying 'playa' covered by a thin layer of alluvium overlying volcano-sedimentary basin fill. The area is morphologically and positionally somewhat similar to the company's WEL project claim area, containing mudstones



\$CDSG Project Overview

Energy For Tomorrow

CDSG holds an agreement with American Lithium Minerals Inc. (OTC: AMLM), a Nevada based publicly held corporation, whereby CDSG will have the right to earn up to a Sixty Percent (60%) interest in the West End Lithium (WEL) Project in consideration of cash and stepped annual exploration expenditure commitments.

The WEL Project is comprised of 24 unpatented lode claims located fully within the outer boundary of the Tonopah Lithium Claims ("TLC") property held by American Lithium Corp. (OTC: LIACF).

The TLC Project possesses a NI 43-101 compliant resource of 5.37 million tonnes Lithium Carbonate Equivalent ("LCE") in the Measured and Indicated category which compares very favourably to the Thacker Pass Lithium project, also located in Nevada, that has been estimated to contain recoverable lithium worth \$39 billion USD. The Thacker Pass sedimentary hosted deposit holds 3.13 million tonnes of Proven and Probable Reserves of LCE and is owned by Lithium Americas (NYSE: LAC).

The WEL project appears to be underlain by the same Miocene claystone rock sequences that host the TLC resource and CDSG is currently updating its geologic database prior conducting drilling.



\$CDSG \$BRL \$LAC \$LIACF

New Cutting Edge Technology

CDSG plans to partner with Barrel Energy Inc (OTC: BRL) ("Barrel") on its exploration and production endeavors with Barrel in the area due to the highly innovative Lithium extraction methodologies Barrel is currently advancing for clay hosted deposits.



\$CDSG \$BRL

much like the TLC project and the Thacker Pass projects of Nevada.

The CDSG project is part of a Definitive Agreement with Kilimanjaro Lithium Inc., a private corporation domiciled in the United Republic of Tanzania, whereby CDSG has the exclusive right to earn up to a One Hundred Percent (100%) interest in two large Lithium projects, Titan 1 and 2. Presently, the company has already fulfilled the requirements for 80% of the total earn-in on both projects.

To simplify the business descriptions of Titan Lithium (CDSG) and Barrel Energy (BRLL), and how they associate with each other, CDSG is our lithium resource holdings company and BRLL is our technology company. Management of both companies is very excited to continue the announcements of advancements into Lithium resources, especially, in sharing the completion of the agreement relating to our claystone extraction technology.

□ New US Initiatives to Strengthen Economic Ties with Tanzania

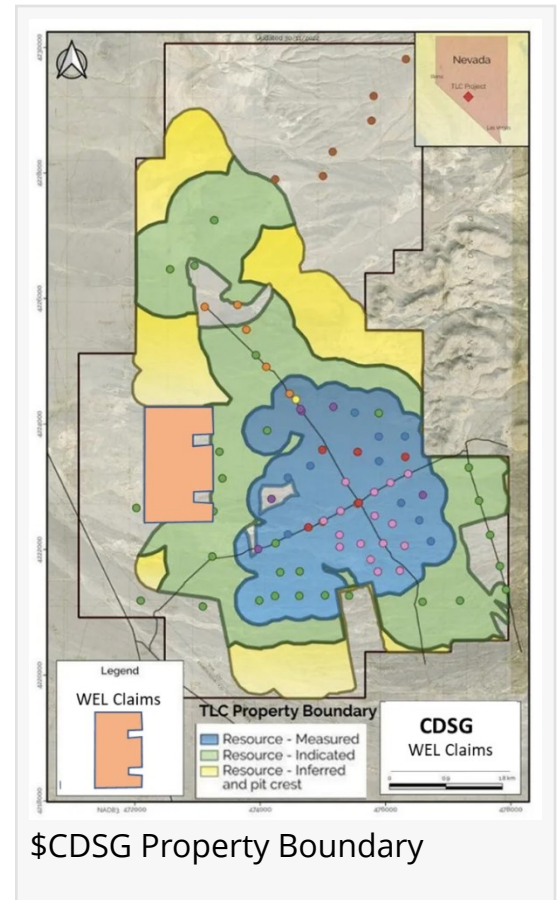
On March 31st CDSG reported the announcement of several new economic initiatives between the U.S. and the Republic of Tanzania.

Recently Kamala Harris, Vice President of the United States, visited and spoke in Dar es Salaam, the country's commercial capital. During the visit by the VP, several initiatives were announced between the two nations, several of which will have a positive effect on the CDSG Titan Lithium projects. "Working together, it is our shared goal to increase economic investment in Tanzania and strengthen our economic ties," Harris stated.

First on the agenda was a new memorandum of understanding between the Export-Import Bank of the United States (EXIM) and the government of Tanzania that will facilitate up to \$500 million USD in financing to help U.S. companies export goods and services to Tanzania in sectors including infrastructure and projects within the clean energy spectrum.

Directly addressing minerals that support the fast-growing Electric Vehicle sector, the VP praised the innovation and ingenuity of the country and how well the government is working with the private sector. Tanzania will soon be the first African nation to have a facility for the processing of minerals for supplying the global electric vehicle battery market.

□ CDSG Samples up to 1.96% LI₂O at Titan 2 Project, Tanzania



On March 29th CDSG announced new positive soil geochemical sampling results from further sampling of the company's expansive Titan 2 lithium property in Tanzania.

After the strong initial geochemical sample results that averaged 3,920 ppm Lithium, the CDSG technical team returned to the site and sampled a broader area employing regularly spaced samples over a grid that covers 6.2 square miles (16 sq. kms).

With approximately half of the soil sample results from the grid in, CDSG noted that the new positive Lithium results averaged 4,600 ppm Lithium. The lowest positive value returned 900 ppm Li and the highest value, located near the center of the grid, returned 1.95% Li₂O (9,100 ppm Li) which was nearly identical to the previous high value returned from the area. Some nil values were encountered on the edge of the grid.

Rigorous Quality control of the CDSG samples was maintained and all samples were prepared and analyzed at the independent and ISO 9001-certified African Minerals and Geosciences Centre (AMGC) in Dar es Salaam.

□ CDSG Extends Large South Lithium Zone 2.5 KMS Westward with High-Grade Results Including 4.82% Li₂O On Titan 1 Project

On March 13th CDSG announced strong Lithium geochemical sampling results from the continuation of the surface sampling program at the company's huge Titan 1 lithium property in Tanzania.

As part of the CDSG follow-up, a program designed to outline the boundaries of the expansive Titan 1 Lithium anomaly, extensions of the original survey lines were made to the north and south, and new roughly parallel soil geochemical survey lines were added, such that the surveyed area now covers a 10-mile x 3.3-mile (16.3 x 5.3 km) area.

Samples were all removed from the B soil horizon, from a depth of 8 to 11 inches with the line orientation running approximately North-South.

The majority of results from the westernmost line have returned. The addition of this line is beginning to show that there appear to be three distinct high-grade areas emerging from the survey, a north, mid, and south 'zone'.

This west line encountered null to high-grade values, with the high-grade values lining up with the locations of the three separate high-grade zones. Several new samples from the line returned values that averaged 2.64% Li₂O (12,266 ppm Li) over 1.25 miles (2kms). The highest grade encountered on the western line is returned at 4.82% Li₂O (22,400 ppm Li).

CDSG has previously described the north central zone which remains open to the north, however, with the extension of the Southern zone it has become the largest, measuring slightly

over 5 x 2.5 miles in extent, containing Lithium values that average 1.76% Li₂O (8,177 ppm Li). This zone currently remains open to the east and west.

For more information on CDSG visit: <https://titanlithiuminc.com>

DISCLAIMER: CAP/FrontPageStocks/CorporateAds.com (CA) is a third-party publisher and news dissemination service provider. CAP/FPS/CA is NOT affiliated in any manner with any company mentioned herein. CAP/FPS/CA is a news dissemination solutions provider and is NOT a registered broker/dealer/analyst/adviser, holds no investment licenses, and may NOT sell, offer to sell, or offer to buy any security. CAP/FPS/CA's market updates, news alerts and corporate profiles are NOT a solicitation or recommendation to buy, sell or hold securities. The material in this release is intended to be strictly informational and is NEVER to be construed or interpreted as research material. All readers are strongly urged to perform research and due diligence on their own and consult a licensed financial professional before considering any level of investing in stocks. All material included herein is republished content and details which were previously disseminated by the companies mentioned in this release or the opinion of the writer. CAP/FPS/CA is not liable for any investment decisions by its readers or subscribers. Investors are cautioned that they may lose all or a portion of their investment when investing in stocks. CAP/FPS/CA has been compensated \$500 by a third party for the dissemination of this article.

Disclaimer/Safe Harbor:

These news releases and postings may contain forward-looking statements within the meaning of the Securities Litigation Reform Act. The statements reflect the Company's current views with respect to future events that involve risks and uncertainties. Among others, these risks include the expectation that any of the companies mentioned herein will achieve significant sales, the failure to meet schedule or performance requirements of the companies' contracts, the companies' liquidity position, the companies' ability to obtain new contracts, the emergence of competitors with greater financial resources and the impact of competitive pricing. In light of these uncertainties, the forward-looking events referred to in this release might not occur.

SOURCE: CorporateAds.com

Harp Sangha
Titan Lithium, Inc.
+1 702-595-2247

[email us here](#)

Visit us on social media:

[Twitter](#)

[YouTube](#)

This press release can be viewed online at: <https://www.einpresswire.com/article/626059584>

EIN Presswire's priority is source transparency. We do not allow opaque clients, and our editors

try to be careful about weeding out false and misleading content. As a user, if you see something we have missed, please do bring it to our attention. Your help is welcome. EIN Presswire, Everyone's Internet News Presswire™, tries to define some of the boundaries that are reasonable in today's world. Please see our Editorial Guidelines for more information.

© 1995-2023 Newsmatics Inc. All Right Reserved.