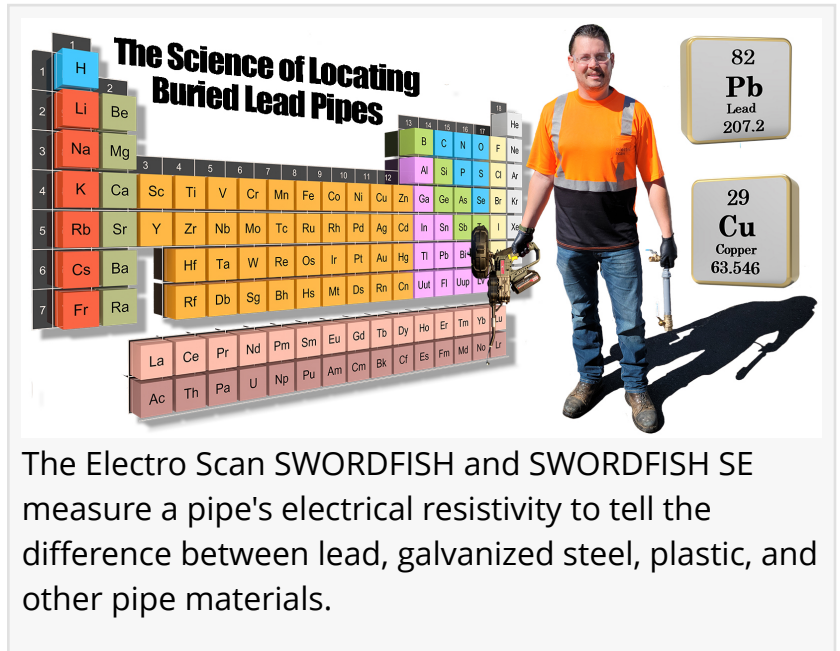


SWORDFISH Special Edition Released to Support 50,000 U.S. Water Utilities to Inventory Challenging Buried Lead Pipes

Purpose-Built to Navigate Complex Fittings, Valves, and Meter Settings Without Digging, SWORDFISH SE is Able to Survey Pressurized & Unpressurized Pipes.

SACRAMENTO, CALIFORNIA, UNITED STATES, April 11, 2023

/EINPresswire.com/ -- [Electro Scan Inc.](https://www.electroscaninc.com/) today announced the release of SWORDFISH SPECIAL EDITION (SE) for plumbers and water utilities to detect lead pipes in challenging and poorly constructed water service lines.



The Electro Scan SWORDFISH and SWORDFISH SE measure a pipe's electrical resistivity to tell the difference between lead, galvanized steel, plastic, and other pipe materials.

Last week, the U.S. Environmental Protection Agency (USEPA) estimated that 9.2 million lead pipes carry drinking water to American taps.

“

The ability for Electro Scan's SWORDFISH to achieve a 100% verification of lead pipe, without digging, is a game-changer.”



Chuck Hansen, Chairman & CEO, Electro Scan Inc.

However, the actual number of U.S. lead pipes may be double or triple USEPA estimates given the lack of data and poor mapping of customer-owned service lines, now covered by USEPA regulations.

Lead pipes were commonly used by plumbers and water utilities until they were banned in 1986 when Congress amended the Clean Water Act to prohibit the use of lead pipes and lead soldered joints in public water systems.

Lead was often melted and used by water utilities to seal joints in Asbestos Cement pipes transporting water to customer homes.

Reducing time-consuming,
inconvenient, and costly field work,
Electro Scan's SWORDFISH eliminates
the need to excavate and manually test
buried.

Feature Comparison			
Product	SWORDFISH		SWORDFISH SE Special Edition
Target Service Line Entry	For utilities with meter setting entries with limited 90-degree bends and straight entries.		For utilities that have valves with extreme internal geometry, change in pipe diameter, and multiple 90-degree bends.
Cable Length	80 ft		100 ft
Cable Diameter	1/4"		3/16"
Pipe Diameter	1/2" - 3"		1/2" - 3"
Probe	Spring/Beveled		Purpose Built
Real-Time Display	✓		✓
Bluetooth Enabled	✓		✓
Insertion Tube	✓		✓
Pressurized Entry	✓		✓
Non-Pressurized Entry	✓		✓
Power Forward	✗		✓
Power Retraction	✗		✓
Power Rotation	✓		✗
MSRP	\$70,000		\$74,500

U.S. Patents and Patent-Pending.

Both SWORDFISH models automatically detect leaks, while the SWORDFISH SE does so with greater maneuverability.

CURB SIDE ENTRY



While SWORDFISH handles most standard meter settings, SWORDFISH SE navigates difficult-to-access piping networks.

Rather than spot-checking underground pipes by excavation, SWORDFISH assesses the entire

water service line in minutes.

To help achieve 100% replacement of all U.S. lead-based water service lines, the USEPA has mandated that utilities must complete a detailed inventory of all services, public and private, by October 16, 2024.

The SWORDFISH SE was designed in response from water utilities to help overcome challenging underground pipe configurations.

Purpose-built, SWORDFISH SE navigates and surveys the most severe pipe configurations, often found in customer-side water service lines.

Using its patented machine-intelligent electrified probe, Electro Scan's SWORDFISH easily enters common meter settings, valves and water fixtures to automatically test pipe materials from inside pipes.

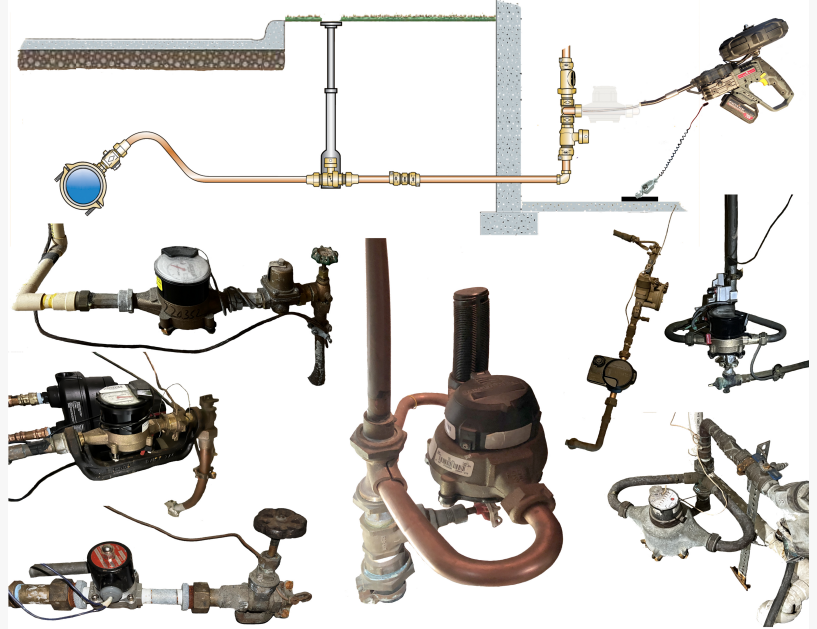
The SWORDFISH probe emits a continuous low voltage electric current equivalent to six AA batteries. This high frequency signal both eliminates interference from stray currents and allows standard devices to track its underground location.

Often referred to as electrical resistance testing, real-time measurements show specific resistivity levels that can be matched to common pipe materials, including lead (Pb).

Industry experts agree that most homes with lead-based water service lines have gone unmapped and undetected since their installation.

Lack of historical construction records, inaccurate maps, and incorrectly digitized geographic

BASEMENT ENTRY



Basement entries can take a lot of preparation and while SWORDFISH easily handles standard configurations, SWORDFISH SE handles more challenging entries.

SWORDFISH SE



SWORDFISH and SWORDFISH SE come fully configured and field-ready, including all supporting equipment, parts, lithium battery & charger, and cloud licensing.

information systems (GIS), allowing neurotoxins into household water taps.

Homes without lead service lines may still be 'at risk' as many service line pipe joints were often made watertight by plumbers and contractors using melted lead solder.

Electro Scan is nearing completion of their 26-CITY U.S. SWORDFISH 'GET THE LEAD OUT' ROADSHOW, in which they are providing nationwide seminars, including 'live' SWORDFISH field demonstrations for water utilities, consultants, and contractors.

Some utilities, such as Denver Water and Miami-Dade Water and Sewer, provided 'challenge courses' to test the Company's accuracy in locating buried lead service lines.

Electro Scan understands that a wide variety of construction techniques were used to install water service lines, combining different makes, models, manufacturers, and methods.

To address the water industry's more complex networks, the Company began working on a special purpose-built device, SWORDFISH SE, that could overcome challenging bends, poorly aligned joints, and other potential obstructions.

Navigating some of the most difficult piping infrastructure, SWORDFISH SE delivers unparalleled in-pipe maneuverability.

"The number of lead pipes that supply America's drinking water may be substantially higher than most people think," stated Hansen.

Last week the USEPA released their estimate for the number of lead pipes for 3,500 water utilities. Yet, the U.S. has nearly 50,000 water utilities that are subject to the Lead and Copper Rule Revision mandates.

According to the USEPA survey, the State of Florida led the nation with an estimated 1.16 million lead pipes, while the Natural Resources Defense Council had estimated 200,000 lead pipes in the state in 2021.

The USEPA survey ranked the State of Illinois as second, with 1.04 million lead pipes, followed by Ohio, Pennsylvania, Texas and New York.

Contact Electro Scan Inc. for a recommendation on which SWORDFISH is right for your Agency based on your pipe standards and unique configurations.

DISCLAIMER

Water service lines may require repair or maintenance before assessment. Valves that cannot be fully opened or closed, impassible pipes due to excessive debris, corrosion, or bio matter, pipes with greater than 90-degree angles, calcification, coiled piping, or pinched piping, may

require repair and/or cleaning and flushing to remove or correct obstructions before conducting a SWORDFISH survey.

ABOUT ELECTRO SCAN INC.

Electro Scan Inc. is a leading supplier of machine-intelligent pipeline assessment, leak detection, and quality assurance products and services for the water, wastewater, and gas pipeline markets. The company designs, develops, and markets proprietary equipment, delivering field services and SaaS-based cloud applications that automatically locate, measure, and report leaks typically not found by legacy inspection methods.

HASHTAGS

#acousticsensors #ai #amp8 #artificialintelligence #asce #askchuck #awwa #awwam77
#britishwater #californiadrought #chuckhansen #cipp #conditionassessment #conductivity
#deeplearning #drainage #drought #electromagnetic #electroscan #epa #esg #esginvesting
#fell #gettheleadout #gpm #infrastructure #innovyze #inspection #iot #lead #leaddrinkingwater
#leak #leadpipe #leaddetection #leaks #leakdetection #leakdetectionoftheyear2021 #lps #m77
#machinelearning #megadrought #ml #nassco #pacp #pcat #piperepair #pressuretransient
#resilient #resiliency #sewer #sewerai #sustainability #swan #trenchless #usepa #utilities
#wastewater #water #waterai #wsaa #worldbank #wsaa

Janine Mullinix

Electro Scan Inc.

+1 916-779-0660

[email us here](#)

Visit us on social media:

[Facebook](#)

[Twitter](#)

[LinkedIn](#)

[Instagram](#)

[YouTube](#)

This press release can be viewed online at: <https://www.einpresswire.com/article/626066961>

EIN Presswire's priority is source transparency. We do not allow opaque clients, and our editors try to be careful about weeding out false and misleading content. As a user, if you see something we have missed, please do bring it to our attention. Your help is welcome. EIN Presswire, Everyone's Internet News Presswire™, tries to define some of the boundaries that are reasonable in today's world. Please see our Editorial Guidelines for more information.

© 1995-2023 Newsmatics Inc. All Right Reserved.