

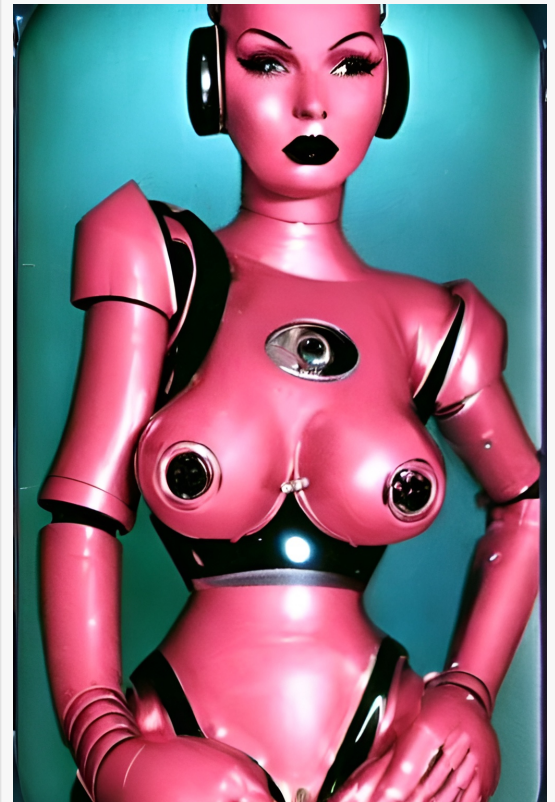
Love Machine: A Controversial Photographic Series on the Early Days of AI Creativity

MARSHFIELD, MA, UNITED STATES, May 2, 2023 /EINPresswire.com/ -- Love Machine, a photographic series created using the first generation of artificial intelligence, presents a captivating and insightful glimpse into the early days of AI's attempt to mimic human creativity. This series of retro female robots, created by visionary [artist](#) Claudia Starkey, explores the relationship between AI and human emotions, while also documenting a moment in history when AI was still in its infancy. With the advancement of AI technology, the algorithms have evolved to create more sophisticated and elaborate models. The photos in this series, however, showcase the humble beginnings of AI's creative journey. In a sense, they are a piece of history, documenting the early steps of AI in our world.

Starkey's interest in artificial neural pathways led her to explore the question of what love and companionship might look like to a robotic intelligence. The resulting series of photos are a valuable contribution to the field, capturing a moment in history when AI was still in its early stages. As the inexorable march of time unfolds, the evolution of AI technology will continue to push the boundaries of what was once considered unimaginable.

Love Machine reminds us of the humble beginnings of this revolutionary technology, full of potential and unease to the future of our world. While AI technology has indeed achieved significant strides in emulating human behavior and emotions, the extent to which it can truly comprehend and experience love remains a subject of ongoing debate and speculation within the scientific and philosophical communities. It also challenges us to consider the ethical implications of creating machines that can mimic human emotions and behaviors.

Love Machine is not only a playful exploration of the broad themes of human love and sexuality, but it also touches upon a timely and critical issue: the emerging discussion around the role of robots as companions and even romantic partners in the not-so-distant future. Such



love machine photographic series

developments pose significant ethical questions and concerns about the nature of human-robot interactions and the potential implications for society as a whole. Therefore, this photographic series serves as an engaging and thought-provoking contribution to this ongoing discourse.

“

it touches upon a timely and critical issue: the emerging discussion around the role of robots as companions and even romantic partners in the not-so-distant future”

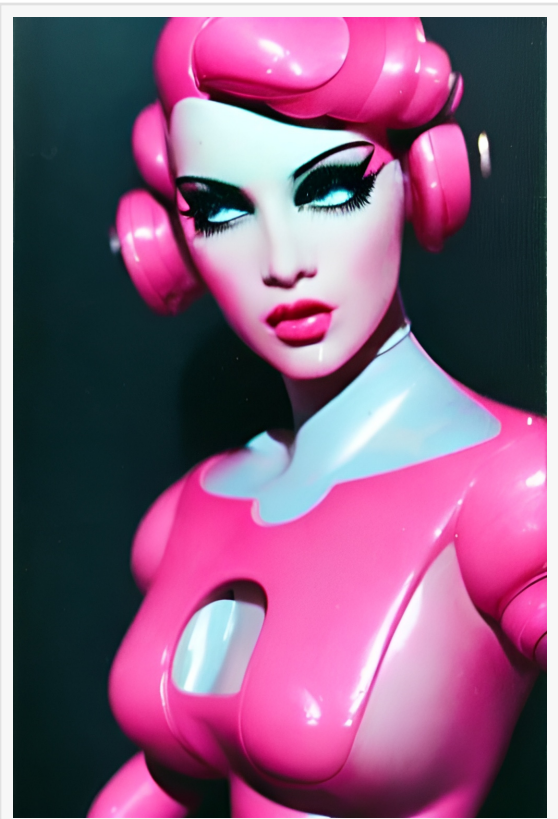
Claudia Starkey

Claudia Starkey
Claudia Starkey Art
+1 6179053843

[email us here](#)

Visit us on social media:

[Instagram](#)



love machine photographic series



love machine photographic series

This press release can be viewed online at: <https://www.einpresswire.com/article/631185499>

EIN Presswire's priority is source transparency. We do not allow opaque clients, and our editors try to be careful about weeding out false and misleading content. As a user, if you see something we have missed, please do bring it to our attention. Your help is welcome. EIN Presswire, Everyone's Internet News Presswire™, tries to define some of the boundaries that are reasonable in today's world. Please see our Editorial Guidelines for more information.

© 1995-2023 Newsmatics Inc. All Right Reserved.