

Chat GPT Compares Itself Against Base64.ai's Powerful Document Processing AI and the Results Are Hilarious

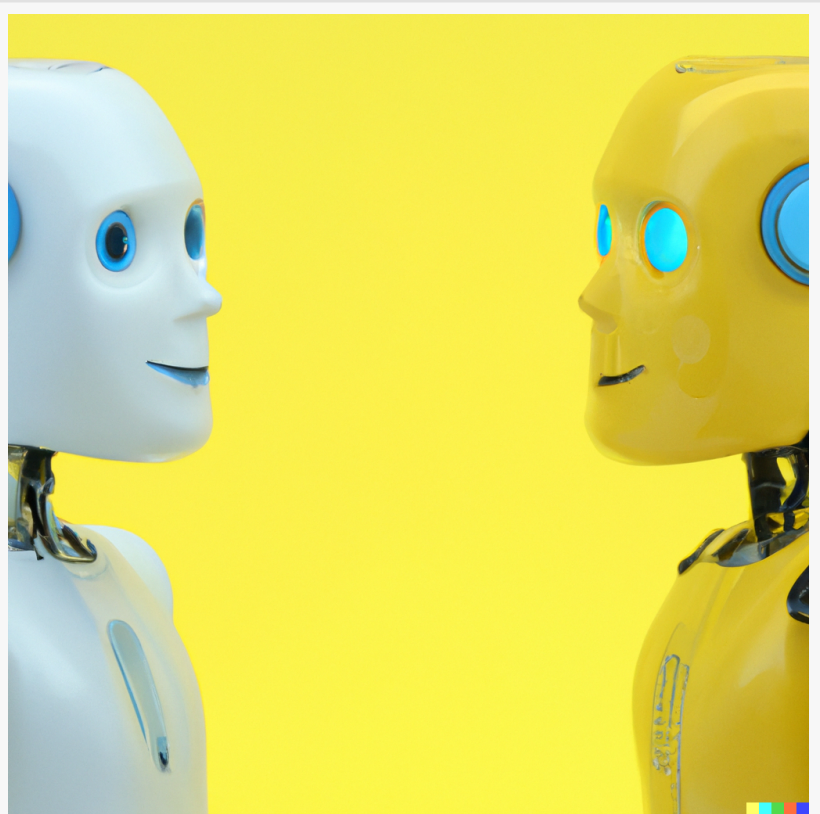
We asked if Chat GPT could replace all AI solutions, including Base64.ai's powerful Document Processing AI. Here is the answer from the Chat GPT itself.

NEW YORK, NY, USA, May 9, 2023 /EINPresswire.com/ -- Recognized as the most successful product launch in history, we asked if Chat GPT could replace all AI solutions, including [Base64.ai's](#) powerful Document Processing AI, which understands all types of documents. Here is the answer from the Chat GPT itself.

Question: What is the difference between Chat GPT and Base64.ai's document processing AI?

Chat GPT and Base64.ai's document processing AI are both artificial intelligence tools, but they serve different purposes and have different capabilities. Chat GPT is a large language model designed to generate human-like responses to text-based inputs. It can engage in natural language conversations and generate text that is coherent, informative, and contextually relevant. It has been trained on a vast amount of text data and can generate responses in various languages.

Base64.ai's document processing AI, on the other hand, is designed to extract information from documents and perform various tasks such as data extraction, classification, and analysis. It can understand the structure and content of various document types, including PDFs, invoices, and receipts, and extract relevant information from them. It uses techniques such as optical character recognition (OCR) and natural language processing (NLP) to identify and extract data from unstructured text.



AI facing each other

In summary, Chat GPT is designed for generating human-like responses in natural language conversations, while Base64.ai's document processing AI is designed for automating document processing tasks such as data extraction and classification.

Question: What Is Chat GPT and How Does It Work?

ChatGPT is an artificial intelligence language model developed by OpenAI, based on the GPT (Generative Pre-trained Transformer) architecture. It is designed to process and generate natural language text, which allows it to communicate with humans in a conversational manner. The model is trained on vast amounts of text data from the internet and other sources,

using unsupervised learning techniques to learn patterns and relationships in the language. This training allows ChatGPT to understand the context of a conversation and generate appropriate responses. When a user inputs a message or question, ChatGPT processes it by breaking it down

“

Chat GPT is designed for generating human-like responses, while Base64.ai's document processing AI is designed for automating document processing tasks such as data extraction and classification.”

Chat GPT

into its constituent parts, such as words and phrases, and then analyzes these parts to determine the most likely meaning and context. It then generates a response based on this analysis, using its knowledge of language patterns and relationships. ChatGPT is continually learning and improving through exposure to new data and user interactions. This means that over time, it becomes better at understanding and generating natural language, allowing for more engaging and realistic conversations.

Question: How does Base64.ai document processing work?

Base64.ai is a company that provides an AI-powered document processing solution to automate document management processes. Their document processing workflow includes the following steps:

*Document ingestion: The first step is to ingest the document into the system. This can be done



Why should we not use Chat GPT for document processing?

Chat GPT is primarily designed for generating text responses based on input text. While it can be used for document processing, there are several limitations to its use in this context:

1. **Limited Input Length:** GPT models, including Chat GPT, have a maximum input length that they can process effectively. This means that if you try to feed in a long document, the model may not be able to process all of it and may lose important information.
2. **Lack of Contextual Understanding:** While Chat GPT is good at generating text based on input text, it may not have a deep contextual understanding of the document as a whole. This can lead to inaccuracies and errors in processing the document.
3. **Lack of Domain-Specific Knowledge:** Chat GPT is a general language model and may not have specialized knowledge in a particular domain. This can be a problem when processing documents that require specialized knowledge, such as technical documents or legal contracts.
4. **Difficulty in Extracting Structured Data:** Chat GPT is designed to generate text and may not be suitable for extracting structured data from documents. This can be a problem when you need to extract information such as dates, addresses, or other structured data.
5. **Limited Control over Output:** Chat GPT generates text based on input text, but you may not have control over the output. This can be a problem when you need to extract specific information from a document or when you need the output to be formatted in a specific way.

Overall, while Chat GPT can be used for document processing, it may not be the best tool for the job. There are other tools, such as natural language processing (NLP) libraries, that are specifically designed for document processing and may be more suitable for your needs.

Chat GPT is not suitable for documents.

through various means, including uploading a document from a computer or mobile device, scanning a physical document, or sending a document via email.

*Document classification: Once the document is ingested, the system classifies the document into various categories based on its type, such as invoices, contracts, or receipts.

*Data extraction: The next step is to extract relevant data from the document. This involves identifying key fields such as the invoice number, date, vendor name, and amount, and extracting the information using OCR (Optical Character Recognition) and other techniques.

*Data validation: After the data is extracted, the system validates the data to ensure its accuracy. This involves cross-checking the extracted information with other data sources, such as a company's internal database or third-party data sources.

*Data integration: Once the data is validated, it can be integrated into other systems or applications, such as accounting or ERP (Enterprise Resource Planning) systems, to automate further processing.

The Base64.ai document processing solution uses AI and machine learning algorithms to improve accuracy and automate the document management process. The system can learn and improve over time as it processes more documents, leading to increased efficiency and reduced errors.

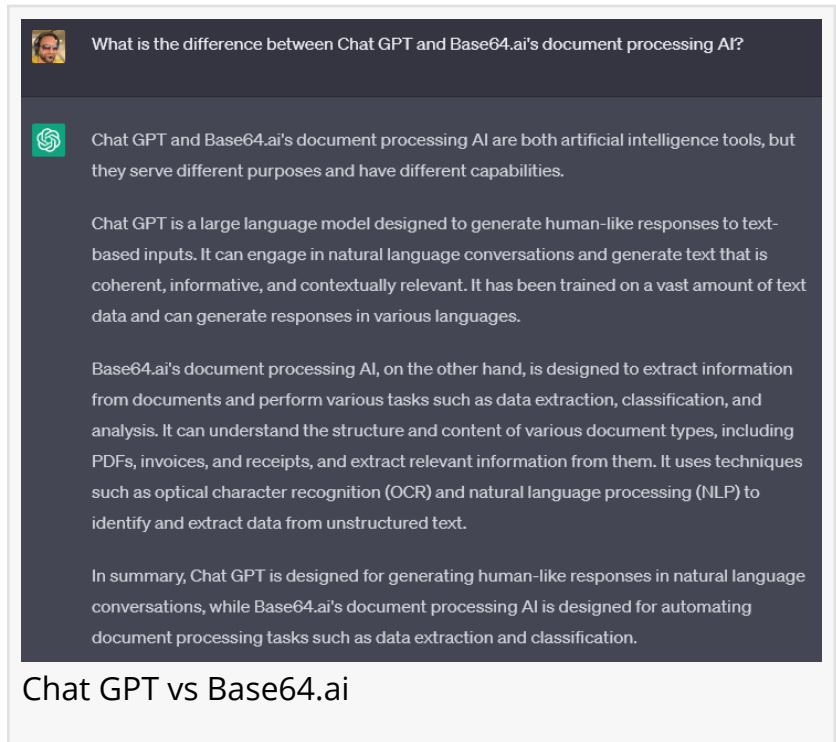
Question: Why should we not use Chat GPT for document processing?

Chat GPT is primarily designed for generating text responses based on input text. While it can be used for document processing, there are several limitations to its use in this context:

*Limited Input Length: GPT models, including Chat GPT, have a maximum input length that they can process effectively. This means that if you try to feed in a long document, the model may not be able to process all of it and may lose important information.

*Lack of Contextual Understanding: While Chat GPT is good at generating text based on input text, it may not have a deep contextual understanding of the document as a whole. This can lead to inaccuracies and errors in processing the document.

*Lack of Domain-Specific Knowledge: Chat GPT is a general language model and may not have specialized knowledge in a particular domain. This can be a problem when processing



The screenshot shows a chat window with a dark background. At the top, there is a question: "What is the difference between Chat GPT and Base64.ai's document processing AI?". Below the question, there is a response from Base64.ai, indicated by a logo. The response explains that both are AI tools but serve different purposes. It details that Chat GPT is a large language model for generating human-like text, while Base64.ai's AI is designed for document processing tasks like data extraction and classification. The chat window is titled "Chat GPT vs Base64.ai" at the bottom.

What is the difference between Chat GPT and Base64.ai's document processing AI?

Chat GPT and Base64.ai's document processing AI are both artificial intelligence tools, but they serve different purposes and have different capabilities.

Chat GPT is a large language model designed to generate human-like responses to text-based inputs. It can engage in natural language conversations and generate text that is coherent, informative, and contextually relevant. It has been trained on a vast amount of text data and can generate responses in various languages.

Base64.ai's document processing AI, on the other hand, is designed to extract information from documents and perform various tasks such as data extraction, classification, and analysis. It can understand the structure and content of various document types, including PDFs, invoices, and receipts, and extract relevant information from them. It uses techniques such as optical character recognition (OCR) and natural language processing (NLP) to identify and extract data from unstructured text.

In summary, Chat GPT is designed for generating human-like responses in natural language conversations, while Base64.ai's document processing AI is designed for automating document processing tasks such as data extraction and classification.

Chat GPT vs Base64.ai

documents that require specialized knowledge, such as technical documents or legal contracts.

*Difficulty in Extracting Structured Data: Chat GPT is designed to generate text and may not be suitable for extracting structured data from documents. This can be a problem when you need to extract information such as dates, addresses, or other structured data.

*Limited Control over Output: Chat GPT generates text based on input text, but you may not have control over the output. This can be a problem when you need to extract specific information from a document or when you need the output to be formatted in a specific way.

*Overall, while Chat GPT can be used for document processing, it may not be the best tool for the job. There are other tools, such as natural language processing (NLP) libraries, that are specifically designed for document processing and may be more suitable for your needs.

Ozan Eren Bilgen

Base64ai Inc

+1 833-866-4646

[email us here](#)

Visit us on social media:

[Facebook](#)

[X](#)

[LinkedIn](#)

[Instagram](#)

[YouTube](#)

[Other](#)

This press release can be viewed online at: <https://www.einpresswire.com/article/632589847>

EIN Presswire's priority is source transparency. We do not allow opaque clients, and our editors try to be careful about weeding out false and misleading content. As a user, if you see something we have missed, please do bring it to our attention. Your help is welcome. EIN Presswire, Everyone's Internet News Presswire™, tries to define some of the boundaries that are reasonable in today's world. Please see our Editorial Guidelines for more information.

© 1995-2026 Newsmatics Inc. All Right Reserved.