

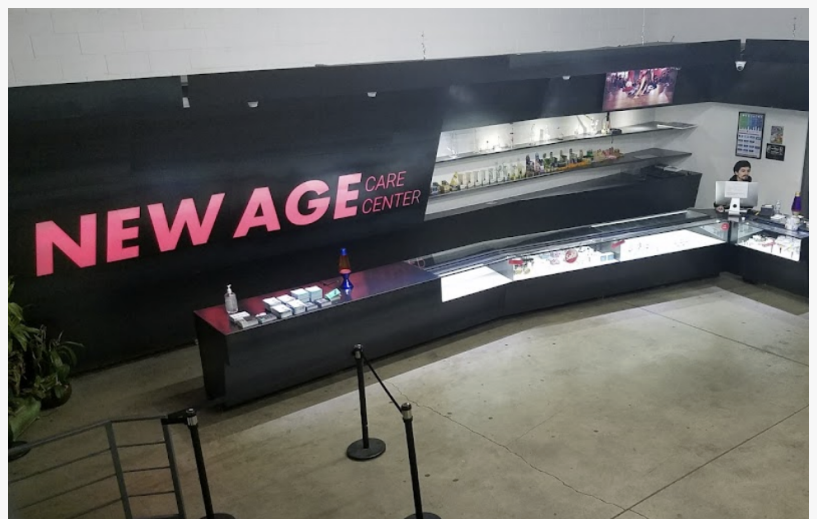
# New Age Care Center Weed Dispensary Los Angeles: Elevating the Cannabis Retail Experience in Los Angeles

*Reinventing the Cannabis Scene with Quality, Knowledge, and Community-Centered Approach*

LOS ANGELES, CALIFORNIA, UNITED STATES, July 27, 2023

/EINPresswire.com/ -- Nestled in the bustling streets of Los Angeles lies a contemporary symbol of the city's vibrant and progressive cannabis industry — the [New Age Care Center Weed Dispensary Los Angeles](#). This premier establishment is changing the face of cannabis retail, combining education, inspiration, and community engagement to deliver a truly unique experience to its customers.

The visionary minds behind [New Age Care Center](#) embraced the dynamic shift in societal perspectives towards cannabis and took a pioneering leap. In doing so, they established a hub that transcends the traditional dispensary framework. Today, this dispensary stands tall on the pillars of quality, inclusivity, and education that guided its inception.



Situated at the culturally rich and historic address of 350 W Martin Luther King Jr Blvd, New Age Care Center takes pride in being an integral part of Los Angeles's bustling present while paying homage to its storied past. The dispensary's location is a symbolic landmark in the cityscape, further enriched by its proximity to iconic Los Angeles staples such as the LA Memorial Coliseum

and Banc of California Stadium. This convenient positioning makes the dispensary an accessible hotspot for both locals seeking quality cannabis products and curious tourists looking to delve into LA's progressive cannabis scene.

Upon entering the dispensary, customers are instantly welcomed by an ambiance that beautifully mirrors the eclectic spirit of Los Angeles. The store's interior design strikes a perfect balance between the rustic charm of vintage Los Angeles architecture and the sleek, minimalistic elegance of contemporary design aesthetics. The tranquil, well-illuminated space, coupled with innovative product displays and spacious layout, sets the stage for an unhurried, immersive shopping experience that is as comforting as it is enlightening.

Mirroring the rich diversity that characterizes the city of Los Angeles, New Age Care Center boasts an extensive assortment of cannabis products. The dispensary prides itself on the vastness of its offerings, painstakingly curated to cater to the distinct preferences and varying needs of its broad clientele. Customers can explore a myriad of top-grade cannabis products, from premium cannabis flower and artfully crafted edibles to potent concentrates, therapeutic tinctures, and wellness products. Each item on the shelf is a testament to the dispensary's commitment to quality, diversity, and customer satisfaction. The offerings at New Age Care Center are more than just products; they are carefully selected expressions of the diverse experiences and benefits that quality cannabis can bring into one's life.



Within the carefully crafted offerings at the New Age Care Center, customers can browse a stellar lineup of some of the most acclaimed names in the cannabis industry. Brands such as Papa & Barkley, Kiva, Raw Garden, and Jeeter grace the shelves, each bringing their unique expertise and innovative approaches to product development. Handpicked for their shared commitment to quality, potency, and innovation, these brands represent the dispensary's unwavering dedication to offering only the premium to its clientele.

Papa & Barkley are pioneers in the industry, renowned for their superior, whole-plant infused products. They offer a wide array of products, from balms and tinctures to capsules and oils, that embody their philosophy of care and commitment to quality. Their products aim to harness the therapeutic benefits of the cannabis plant in its most organic and potent form, providing a natural alternative for customers seeking wellness solutions.

Kiva, another prestigious name in the cannabis world, is recognized for their handcrafted edibles. Their line of cannabis-infused confections brings a deliciously gourmet approach to both medicinal and recreational cannabis use. Through their dedication to quality, Kiva's edibles not only deliver consistent, reliable doses but also ensure an indulgent taste experience.

Raw Garden, with their cleanly extracted, high-quality concentrates, is a testament to the technical prowess of cannabis extraction. They emphasize purity and potency, using advanced extraction techniques to produce a product line that includes live resin, consume, and high-terpene extracts. Raw Garden's offerings are perfect for the discerning consumer who values the essence of the plant and desires a concentrated form of cannabis.

Finally, Jeeter is celebrated for their flavorful cannabis products. With a focus on convenience and quality, their ready-to-consume products are top-shelf cannabis flower and infused with high-potency extract, offering a robust consuming experience for consumers. Jeeter's premium provides the ease of use for beginners, yet satisfy the high standards of seasoned consumers.

In summary, New Age Care Center is proud to carry these remarkable brands in their dispensary. Each brand, with its distinctive offerings, aligns with the center's commitment to provide a diverse, quality-driven selection that caters to the unique needs and preferences of their customers. By curating these top-tier brands, New Age Care Center continues to elevate the cannabis retail experience in Los Angeles.

The dispensary's dedication to an elevated customer experience is reflected in the reviews and testimonials from satisfied patrons. Customers are quick to share their positive experiences. One customer shared, "I had a great time and Marcella was an excellent cashier, so pleasant and kind to all the guests before and after me."

Others praised the dispensary's affordability, accessibility, and overall atmosphere. One patron remarked, "Affordable, great buy on a day. Is a good choice and they have parking. Great



atmosphere.” Safety, too, is a highlighted aspect of their experience, “Great selection. Use the parking lot... Safe area even at night if you get in and out. Secure parking.”

The dispensary acknowledges the importance of constructive feedback and incorporates it into its continual growth strategy. A customer suggested, “Must give New Age a 5 across the board. The only thing they need to work on is that line situation and maybe give some deals more often but I'm not complaining. Highly recommend.”

As New Age Care Center Weed Dispensary continues to reinvent the cannabis retail experience in Los Angeles, it invites everyone to be a part of this unique journey. Visit [www.newage-la.com](http://www.newage-la.com) for a comprehensive look at their product offerings, store details, and to join their rapidly expanding community. Embark on the new age of cannabis retail, today!

New Age Care Center Weed Dispensary is a premier cannabis retail store based in Los Angeles, California. With an extensive array of quality cannabis products and a commitment to educating the community, the dispensary provides an inclusive, uniquely engaging experience for all its patrons.

KiKi Hatfield

New Age Care Center

+1 253-282-9772

kiki@naccetail.com

Visit us on social media:

[Facebook](#)

[Twitter](#)

[Instagram](#)

[TikTok](#)

[Other](#)

---

This press release can be viewed online at: <https://www.einpresswire.com/article/646669061>

EIN Presswire's priority is source transparency. We do not allow opaque clients, and our editors try to be careful about weeding out false and misleading content. As a user, if you see something we have missed, please do bring it to our attention. Your help is welcome. EIN Presswire, Everyone's Internet News Presswire™, tries to define some of the boundaries that are reasonable in today's world. Please see our Editorial Guidelines for more information.

© 1995-2023 Newsmatics Inc. All Right Reserved.