

# Silverberry Genomix Joins C2SHIP, Announces Launch of Silverberry Learning Health System Platform

*The platform is designed to improve individuals' health and personalized care through the integration of knowledge-generation processes into daily practice.*

SAN FRANCISCO, CA, UNITED STATES, August 1, 2023 /EINPresswire.com/ -- [Silverberry Genomix](#),

“

The integration of Silverberry and its Learning Health System into our collective significantly advances our mission, allows us to offer more comprehensive and personalized in-place care solutions.”

*Professor Bijan Najafi -  
Director, Center to Stream  
Healthcare in Place*

a pioneer in personalized health services, today announced its partnership with the Center for Stream Healthcare in Place ([C2SHIP](#)), an initiative funded by the National Science Foundation (NSF).

To mark this significant collaboration, Silverberry is also launching its innovative Learning Health System Platform, designed to advance personalized care and health outcomes across the healthcare industry.

Silverberry's Learning Health System Platform integrates knowledge-generation processes into everyday care routines, offering real-time, evidence-based care through the systematic combination of internal and external data. The system's primary goal is to promote a data-driven

decision-making environment that benefits patients, healthcare providers, and researchers by continually refining processes and offering personalized health education.

Central to this platform is the Silverberry Precision Health Platform, which utilizes genetic testing to provide personalized health assessments and recommendations, combined with personalized health education and support.

"Our goal at Silverberry Genomix is to combine data-driven personalization with improved health outcomes. By partnering with C2SHIP, we can leverage our combined strengths and bring more innovative and impactful solutions to the healthcare market," said Shayan Mashatian, CEO and Founder of Silverberry Genomix.

C2SHIP's mission aligns well with that of Silverberry's, focusing on accelerating innovation through joint efforts with academic and industrial partners. The center's strategy includes an emphasis on personalized technology for in-place care, engaging with members to promote innovation capacity, and fostering collaborations to create multi-center technology.

"The integration of Silverberry into our collective represents a significant step toward our mission. The potential of their Learning Health System Platform, combined with our focus on wearable sensors, data mining, and cybersecurity, allows us to offer more comprehensive and personalized in-place care solutions. This collaboration symbolizes the future of healthcare technology – multi-faceted, integrative, and patient-centric." said Professor Bijan Najafi, Director of C2SHIP.

Through this collaboration, Silverberry Genomix and C2SHIP aim to combine their unique capabilities and strengths, pushing the boundaries of health technology innovation further, targeting superior patient care and healthier societies.

#### About C2SHIP

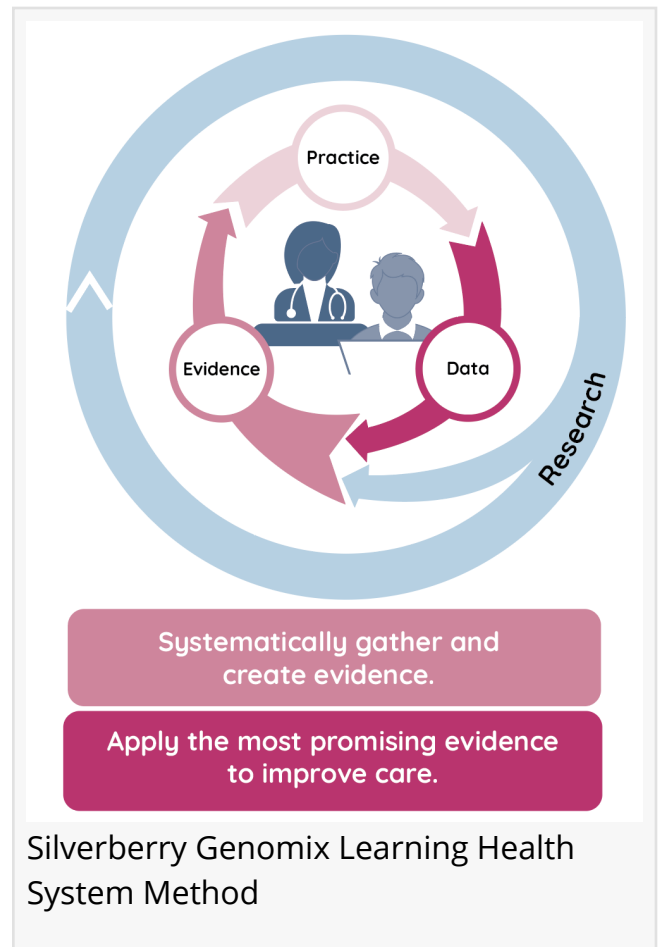
The Center for Stream Healthcare in Place (C2SHIP) is a NSF-funded initiative that brings together academic and industrial partners to develop healthcare technologies for in-place care. The center promotes innovative collaborations, emphasizing fundamental investigations and effective interactions to accelerate technology transfer. For more information, visit <http://www.c2ship.org/>

#### About Silverberry Genomix

Silverberry Genomix is a leading provider of precision health company aimed at improving individuals' health and personalized care through advanced AI technology and genetic testing. Its Learning Health System Platform benefits various healthcare organizations, including hospitals, clinics, research institutions, and senior living organizations. For more information, visit <https://www.silverberrygenomix.com/>

Silverberry Genomix is a Silverberry Group company. For more information about Silverberry Group products and services, see the following links:

- <https://SilverberryGenomix.com>: A Precision Health company that utilizes AI and genetic testing to provide personalized health assessment and recommendations to optimize health



plans. Anyone with a DNA file can upload their files and get free reports or order their Silverberry DNA Kit, which uses a saliva sample to produce the DNA file and actionable health insights.

- <https://Silverberry.AI>: Generative AI Innovation for Enterprise and Academia
- <https://Pingoo.app>: AI-Powered Patient Education and Engagement
- Institute for Precision Health (<https://www.precisionhealth.institute/>) Bringing AI to Healthcare
- <https://Innovearn.com>: Corporation Innovation Program and Services
- <https://FoundersPathway.com>: A founders' forum to fill the gap between invention and innovation

Press Contact: [pr@silverberrygroup.com](mailto:pr@silverberrygroup.com)

Shayan Mashatian  
Silverberry Group LLC  
[email us here](#)

---

This press release can be viewed online at: <https://www.einpresswire.com/article/647377781>

EIN Presswire's priority is source transparency. We do not allow opaque clients, and our editors try to be careful about weeding out false and misleading content. As a user, if you see something we have missed, please do bring it to our attention. Your help is welcome. EIN Presswire, Everyone's Internet News Presswire™, tries to define some of the boundaries that are reasonable in today's world. Please see our Editorial Guidelines for more information.

© 1995-2023 Newsmatics Inc. All Right Reserved.