

Morphy's July 19-20 Automobilia & Petroliana auction crossed the finish line at an impressive \$2.3M

Fresh-to-market Sinclair Aircraft porcelain service station sign with unbeatable airplane graphic was airborne at \$62,400

DENVER, PENNSYLVANIA, UNITED STATES, August 10, 2023

/EINPresswire.com/ -- Led by an enviable array of rare advertising signs, gas pumps, globes and early service station and motoring accessories, [Morphy Auctions'](#) July 19-20 Automobilia & Petroliana auction attracted bidders from coast to coast and cruised to a grand total of \$2.3 million, inclusive of buyer's premium. The 1,000-lot sale featured superior-quality consignments from a number of advanced collections, offering bidders a chance to buy elusive pieces at condition levels that would be nearly impossible to improve upon.

To no one's surprise, a clean, fresh-to-the-market [Sinclair Aircraft](#) double-sided porcelain service station sign with an

early airplane graphic landed in the auction's #1 slot. Measuring 48 inches in diameter and graded a strong 9.0 and 8.0 on each of its sides, the coveted sign was pursued by not only petroliana collectors but also aviation enthusiasts. Propelled by multiple bidders, it rose to a lofty altitude, settling comfortably within its estimate range at \$62,400.

Collectors will pay a premium to acquire gasoline signs that are known to be rare, but even more so if they include attractive images of vehicles or company mascots. A circa-1940s [Paragon Gasolene](#) double-sided porcelain sign with a tanker trunk graphic, its sides graded 8.0 and 7.9, respectively, sold for \$27,600 against an estimate of \$8,000-\$16,000. A very scarce Sunset



Outstanding Sinclair Aircraft double-sided porcelain service station sign with airplane graphic. Clean, fresh-to-market example. Condition of each side: 9.0 and 8.9+. Sold within estimate range for \$62,400

Gasoline & Rainbow Motor Oil double-sided porcelain service station sign depicting a brilliant sunset flanked by images of a speeding car and airplane sold near the top of its estimate range for \$24,000.

Neon car dealership signs, especially those in nice original condition, are always in demand as well. The July auction featured an outstanding dual-brand Cadillac and Oldsmobile die-cut porcelain neon sign with its correct bullnose attachment. A major statement piece measuring 82 by 108 inches and graded 8.75+ condition, it sold above high estimate for \$25,200.

A gleaming lineup of more than 160 gas pump globes crossed the auction block, with many tempting rarities in the mix. A complete 15-inch-diameter Jumbo Gas "Power To Pass" gas pump globe was made in the 1930s and retained its original high-profile metal body. One of few known examples, its main attraction was its outstanding central graphic of a lumbering elephant. Graded 8.5 out of 10 and estimated at \$7,000-\$14,000, the globe had many bidders chasing it until its run concluded at \$20,910.



Rare and complete 15in Jumbo Gas 'Power To Pass' gas pump globe with excellent elephant graphic. High-profile metal body. Circa 1930s. One of only a few known examples. Condition: 8.5. Sold for \$20,910 against an estimate of \$7,000-\$14,000

“

Collectors will pay a premium to acquire gasoline signs that are known to be rare, but even more so if they include attractive images of vehicles or company mascots.”

John Mihovetz, Morphy Auctions Automobilia & Petroliana Department Head

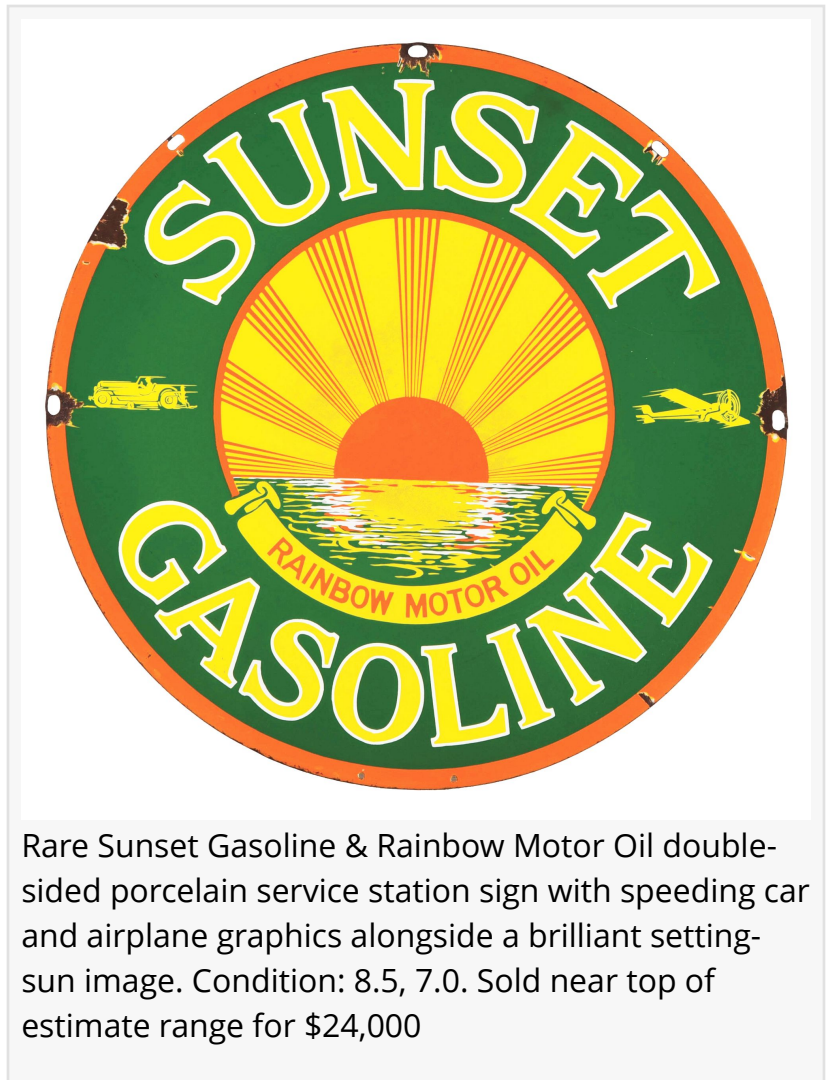
Another great example of early 20th-century art was the rare one-piece S-M (Southern Minnesota) Oil Co., Red Hat Gasoline gas pump globe with a jaunty top-hat graphic on each side. Made in the 1920s and one of only a handful of extant examples, it boasted a condition grade of 8.0 and sold for \$20,000 against an \$8,000-\$14,000 estimate.

A Jenney (Boston, Mass.) Aero Solvenized Gasoline globe lens in gorgeous orange and periwinkle blue colors enhancing an airplane graphic was another top performer, selling for \$21,600 against an estimate of \$7,000-\$14,000. Right alongside it, a rare and exceptional circa-1930s SIPO (Silent Power Gasoline, San Antonio, Texas) 13.5-inch

single-globe lens presented in very fine 9.0 condition. It sold within its estimate range for \$20,910.

What would an automobilia or petroliana collection be without an antique gas pump? A circa-1920s Wayne Roman column 10-gallon visible gas pump in 8.0 condition sold above high estimate for \$28,800; while a Wayne Model #50 showcase gas pump restored in royal blue and white Pure Gasoline livery earned \$26,400 against an estimate of \$10,000-\$15,000.

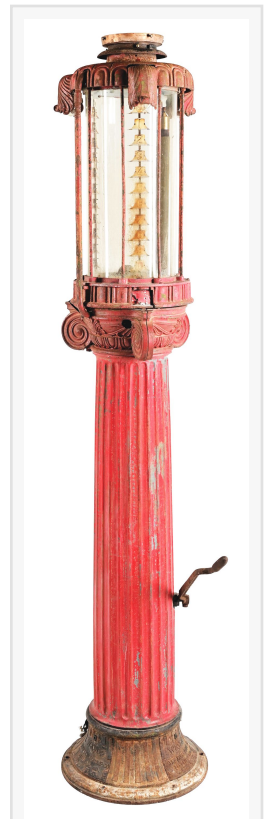
Soda pop advertising was an added attraction of the two-day sale. The offerings were led by an exceedingly rare 14-inch Pepsi-Cola reverse-painted, illuminating glass "bullet" sign with a bottle graphic. Produced in the 1940s and retaining its original wood base and metal "can," the condition 9.25 sign surpassed its high estimate to command an effervescent \$21,420.



To discuss consigning automobilia or petroliana to a future auction at Morphy's, please call toll-free 877-968-8880 or email info@morphyauctions.com. All enquiries are kept strictly confidential. Visit Morphy Auctions online at www.morphyauctions.com.

All prices quoted in this report are inclusive of buyer's premium.

Dan Morphy
Morphy Auctions
+1 877-968-8880
[email us here](#)



Circa-1920s
Wayne Roman
column 10-
gallon visible
gas pump with
excellent
patina. Size:
105in high.
Condition: 8.0.
Sold above
high estimate
for \$28,800



Exceedingly rare 14in Pepsi-Cola reverse-painted glass 'bullet' lighted sign with bottle graphic, circa 1940s. Original wood base and metal 'can.' Condition: 9.25. Sold above high estimate for \$21,420

This press release can be viewed online at: <https://www.einpresswire.com/article/649151607>

EIN Presswire's priority is source transparency. We do not allow opaque clients, and our editors try to be careful about weeding out false and misleading content. As a user, if you see something we have missed, please do bring it to our attention. Your help is welcome. EIN Presswire, Everyone's Internet News Presswire™, tries to define some of the boundaries that are reasonable in today's world. Please see our Editorial Guidelines for more information.

© 1995-2023 Newsmatics Inc. All Right Reserved.