

# Revolutionary 3D wind turbulence simulation with real world data from LIDAR system

*Flagship digitizer card by Spectrum helps to optimize new skyscrapers*

GROSSHANS DORF, GERMANY, August 23, 2023 /EINPresswire.com/ -- A common way of designing a new large building is to make a scale model and test it in a wind tunnel. This has been a recognised test for over 50 years but it is known to underestimate the peak loads, so correction factors are applied to provide a safety margin. Another drawback is that the wind just comes from one direction at a time whereas in the real world, gusts and the large eddies can fluctuate from many

different directions at once. A Danish company, [Vind-Vind](#), is developing a new turbulence model to capture the effects of wind on a building in natural conditions. This modelling uses real world data to enhance its accuracy, gathered with a LIDAR system using 10 ns pulses. Particles in the

air reflect the laser, the changes in the returned light due to the Doppler effect are analysed using the latest flagship product of [Spectrum Instrumentation](#), the ultrafast M5i.3321-x16 digitizer card.

“

Key is the ability of the Spectrum digitizer card to capture the data at its very high sampling rate of 3.2 GigaSamples per second with 12-bit resolution.”

*Per Jørgensen, CEO of Vind-Vind*

Watch the wind simulation video (11 sec, 132 MB):  
<https://spectrum-instrumentation.com/videos/3D.mov>

Per Jørgensen, CEO of Vind-Vind, explained: “At present, there are two ways to measure wind movement, either low resolution at a long distance of several kilometres or high

resolution over a short distance of a few hundred meters. We created a new LIDAR-based instrument to measure long distances at a high resolution. Key to this is the ability of the Spectrum digitizer card to capture the data at its very high sampling rate of 3.2 GigaSamples per second with 12 bit resolution. This is actually more than we need but it gives us the margin to

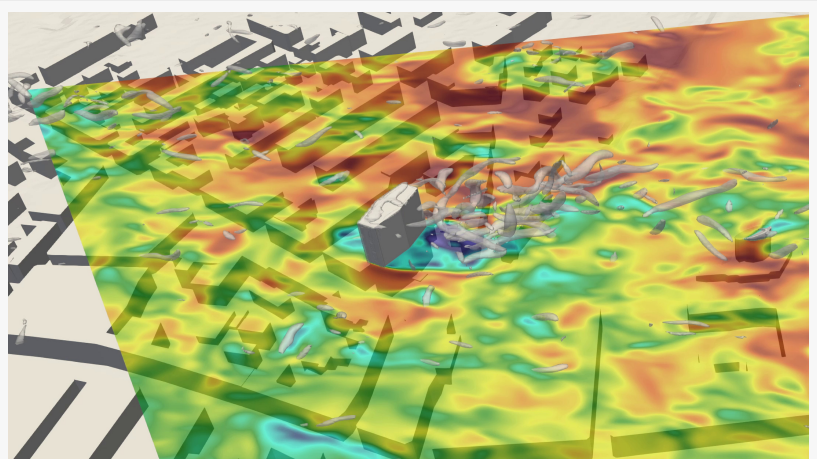


Fig. 1: Wind interacts with buildings in very complex ways. This screenshot from the video shows wind velocities at 33 m height relative to the innovative Lidar system located at the upper left corner

allow for 'noisy' conditions and weak signals. The extra bandwidth also means that we can immediately identify and filter out high frequency noise leaving only low frequency noise to be eliminated later when processing the data."

As can be imagined, keeping track of a vast number of dust particles moving in the wind generates a huge amount of data. Vind-Vind was initially going to use an FPGA platform but rejected this approach as being too complex to programme and not having enough compute power to handle the large amount of data being created every second. The data problem was solved by using Spectrum's SCAPP drivers (Spectrum's CUDA Access for Parallel Processing). In this solution, the M5i digitizer with its 16-lane PCIe interface

sends the collected data with up to 12.8 GigaByte per second directly to a CUDA-based graphics card instead of the PC CPU. The graphic card, in this case a Nvidia Quadro A4000 including a GPU with 6,144 cores, is processing the data much faster than the CPU of the PC with only 6 or 8 cores.

Vind-Vind's initial goal for its computer modelling is to assess how the turbulence compares to the measured turbulence over an urban environment. After that, turbulence modelling will be improved to include the effects of a higher section of the atmosphere with wind gusts from different directions. Accurate data gathered in the real world can then be used to verify and validate the predictions of the 3D computer simulation. "With proven accuracy, our 3D wind modelling can be used to provide greater levels of safety and wind comfort as it will predict the complex nature of the real world, and not the constrained version of the wind tunnel" added Jorgensen. "Eventually it will mean that the considerable over specification that architects have to build in because of the inaccuracy of wind tunnel models can be reduced. This means improving sustainability and saving costs by cutting down on the unnecessary use of materials."

The company envisages that its 3D wind modelling will prove invaluable for the many situations where typical wind tunnels cannot provide useful results such as the complex wind interactions of atmospheric turbulence with urban environments, clusters of wind turbines, bridges or airports.

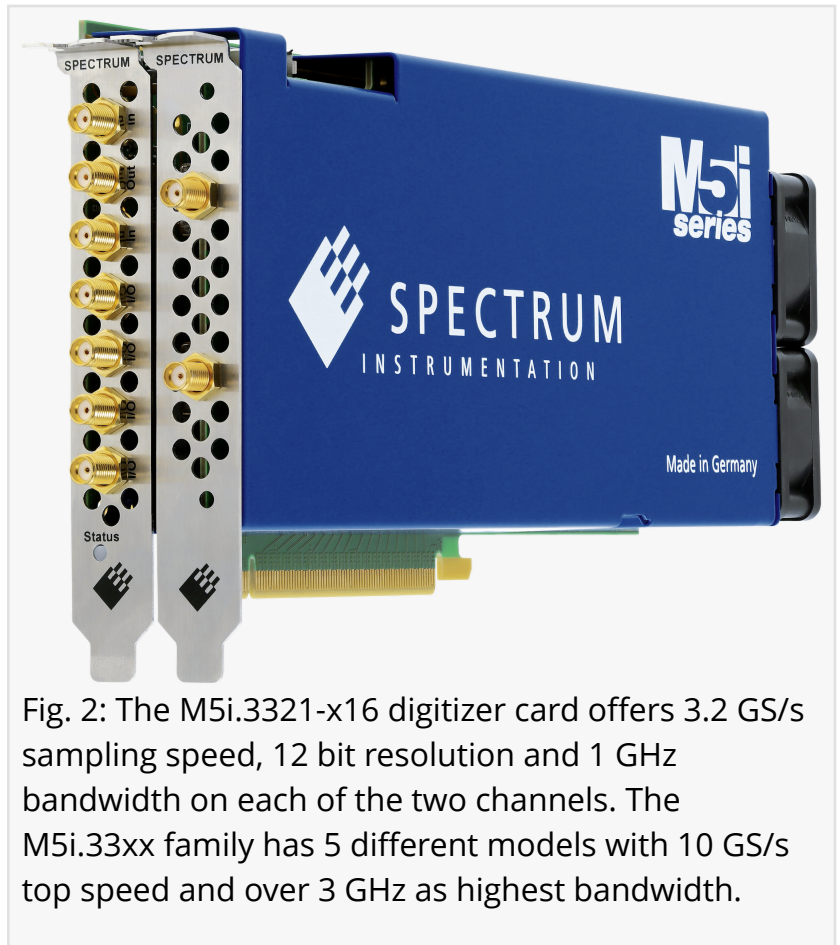


Fig. 2: The M5i.3321-x16 digitizer card offers 3.2 GS/s sampling speed, 12 bit resolution and 1 GHz bandwidth on each of the two channels. The M5i.33xx family has 5 different models with 10 GS/s top speed and over 3 GHz as highest bandwidth.

Vind-Vind consists of two sister companies: PJ Science ApS has its focus on producing and selling the innovative LIDAR systems, and Vind-Vind ApS is the consulting company doing wind analysis for the construction industry. More info: [www.vindvind.com](http://www.vindvind.com)

#### About Spectrum Instrumentation

Spectrum Instrumentation, founded in 1989, uses a unique modular concept to design and produce a wide range of more than 200 digitizers and generator products as PC-cards (PCIe and PXIe) and stand-alone Ethernet units (LXI). In over 30 years, Spectrum has gained customers all around the world, including many A-brand industry-leaders and practically all prestigious universities. The company is headquartered near Hamburg, Germany, known for its 5-year warranty and outstanding support that comes directly from the design engineers. More information about Spectrum can be found at [www.spectrum-instrumentation.com](http://www.spectrum-instrumentation.com)

Sven Harnisch

Spectrum Instrumentation

+49 4941 0269560

[email us here](#)

Visit us on social media:

[LinkedIn](#)

---

This press release can be viewed online at: <https://www.einpresswire.com/article/650462297>

EIN Presswire's priority is source transparency. We do not allow opaque clients, and our editors try to be careful about weeding out false and misleading content. As a user, if you see something we have missed, please do bring it to our attention. Your help is welcome. EIN Presswire, Everyone's Internet News Presswire™, tries to define some of the boundaries that are reasonable in today's world. Please see our Editorial Guidelines for more information.

© 1995-2023 Newsmatics Inc. All Right Reserved.