

# ACCES I/O Adds Series of 55 Compact, High-Performance M.2 Cards to Its Small-Form-Factor (SFF) Data Acquisition Line

*Versatile M.2 card lineup reflects the company's commitment to delivering state-of-the-art, highly configurable data acquisition and control solutions*

“

In our ongoing effort to evolve with embedded technology, our new series of M.2 cards cater to the growing need for compact and powerful data acquisition solutions.”

*Peter Persidok, VP of Engineering*

SAN DIEGO, CA, USA, September 24, 2023

/EINPresswire.com/ -- [ACCES I/O Products](#), a recognized industry leader in data acquisition and control technology, today announces the launch of a new series of M.2 cards. Building upon the company's legacy of delivering compact, high-performance products, the new M.2 cards are 100% software/pinout-compatible with their mPCIe (PCI Express Mini Card) versions.

Each of the 55 cards in the series is an M.2 (NVME-socket compatible) 2280 M+B keyed unit with a breakaway for 2260-sized slot compatibility. All are designed to meet the

rugged requirements of MIL-STD-810 when ordered with optional industrial temperature rating and conformal coating. With their small form factor and robust capabilities, these M.2 cards are perfect for an array of applications in sectors including automation, defense, testing, process control and more.

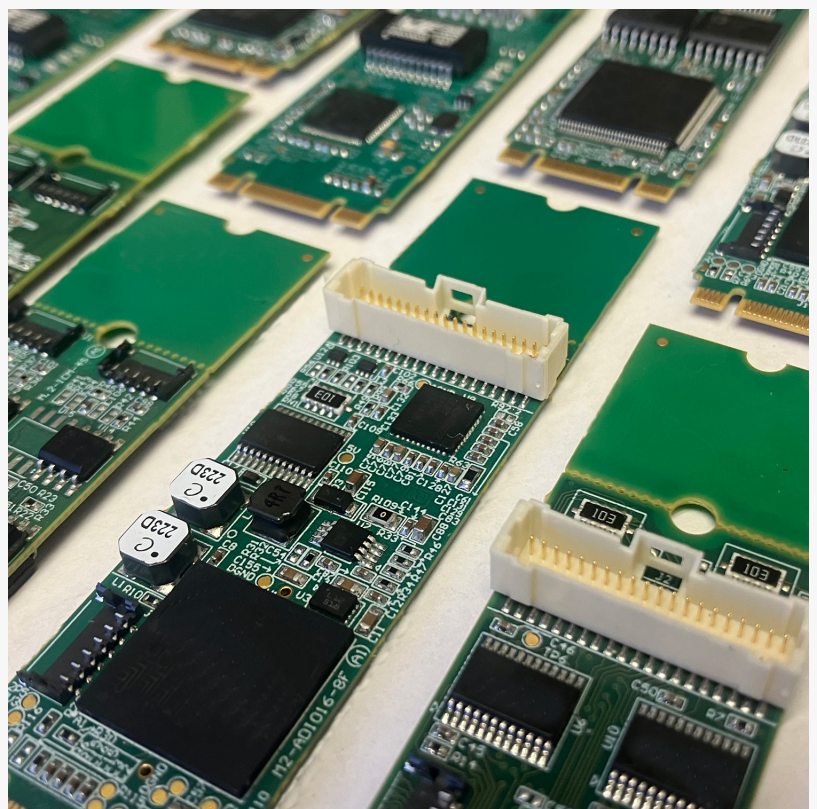
The newly released [M.2 lineup](#) includes:

- M.2-AIO16-16FDS and M.2-ADIO16-8FDS: 16-analog input/4-analog output card and a version with 8 analog inputs. Both offer 1MHz ADCs with 1MHz aggregate waveform playback on the 4 DACs, with 16-bit resolution.
- M.2-COM-4SM, M.2-ICM232-4, M.2-ICM422-4 and M.2-ICM485-4: 4-Channel RS232/422 or 485 cards with nonvolatile software control for the protocol, supporting 3MBd or 10MBd with a custom crystal oscillator.

The M.2-ICM models are isolated versions.

- M.2-LAN-GBE: A gigabit Ethernet adapter using Intel's industry-leading I210 Ethernet chipset.

- M.2-DIO-24S and M.2-DIO-24A: 24-bit digital I/O cards. The -24A supports a flexible array of counter, pulse generation, PWM I/O and IRQ features.
- M.2-IIRO-8: 8-channel isolated digital inputs at up to 120V with 8×1A electromechanical relay outputs.
- M.2-IDIO-8, M.2-IDIO-8H and M.2-IDIO-8L: A set of 8-Channel isolated digital input, solid-state output cards equipped with 34V/2A FETs. The -8H model supports higher current, while the -8L version leverages "low-side switching" FETs.
- M.2-II-16: 16-isolated inputs supporting up to 120 V AC/DC and features switchable filters.
- M.2-QUAD-8: 32-bit 8-Channel counters offering quadrature, true-pulse and raw counting capabilities.



ACCES I/O Introduces Complete Line of M.2 Cards

"In our ongoing effort to evolve with embedded technology, our new series of M.2 cards cater to the growing need for compact and powerful data acquisition solutions," said Peter Persidok, VP of Engineering at ACCES I/O Products.

For more information on these and other products from ACCES I/O Products, visit [www.accesio.com](http://www.accesio.com).

Price: Ranging from \$208 to \$859; Please inquire for OEM and volume pricing

Availability: Now

Delivery: Stock to twelve weeks ARO

Chris Persidok  
ACCES I/O Products  
+1 858-550-9559  
[email us here](#)

This press release can be viewed online at: <https://www.einpresswire.com/article/656095460>

EIN Presswire's priority is source transparency. We do not allow opaque clients, and our editors try to be careful about weeding out false and misleading content. As a user, if you see something we have missed, please do bring it to our attention. Your help is welcome. EIN Presswire, Everyone's Internet News Presswire™, tries to define some of the boundaries that are reasonable in today's world. Please see our Editorial Guidelines for more information.

© 1995-2023 Newsmatics Inc. All Right Reserved.