

Worldipi.com, Renowned Intellectual Property Powerhouse, Defies Convention with Ground-Breaking "Camera Ray"

JUPITER, FLORIDA, UNITED STATES, November 15, 2023 /EINPresswire.com/ -- Worldipi.com, the esteemed titan of intellectual properties, is making waves in healthcare innovation by spearheading the development of Camera Ray, an unprecedented technology with substantial worldwide implications.

Unlike traditional X-ray technology that relies on radiation to detect vertebral anomalies such as scoliosis, Camera Ray takes a bold, safer approach. This game-changing technology harnesses the power of everyday devices like smartphones to capture and transmit images. An advanced application then makes tens of millions of measurements from these images, mapping various body outlines that Artificial Intelligence (AI) turns into a virtual image.

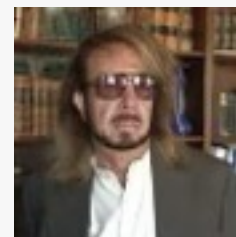
"With full implementation," proclaims Worldipi.com's President, Lisa Pamintuan, "we will reach millions of people globally, screening spinal deformations - a chief cause of later life back, hip, and knee issues. Moreover, the data obtained may kickstart the production of real-time, customized inserts via 3D printing technology - all at a minuscule fraction of traditional casting costs."

This trailblazing venture marries imaging technology with instantaneous 3D printing for appropriate leg length differentials, including post-orthopedic surgery. This innovation, already patented under Worldipi.com's extensive patent portfolios, is a giant step forward in telemedicine capabilities and accessibility.

Worldipi.com's ground-breaking endeavors, steered by celebrated inventor Donald Spector, aim to supercharge telemedicine, outmaneuvering the limitations of in-person diagnostics. Fully harnessing the potential of supercomputers, their innovations promise affordability and universal accessibility.



Lisa Pamintuan, President,
Worldipi.com



Donald Spector, Co-Founder

“

The Camera Ray is a breakthrough using AI to enhance WORLDIPI's patented technologies in this field. We are witnessing a new era of tech advancements in healthcare.”

Lisa Pamintuan

Commenting on the strides in technology, Pamintuan stated, "The Camera Ray is a breakthrough using AI to enhance WORLDIPI's patented technologies in this field. We are witnessing a new era of tech advancements in healthcare."

As Worldipi.com continues to push the envelope, revolutionizing healthcare with other groundbreaking innovations, and reinventing telemedicine.

###

About IPI Holdings, Inc. (Worldipi.com)

WORLDIPI, with its world class Intellectual Properties and the ability to generate new products and ideas for our changing world in real time, is a resource for major, mid-size and entrepreneurial corporations and universities. It has a worldwide network and a history of building billion-dollar industries around the world.

Eileen Doran

Worldipi.com

media@worldipi.com

This press release can be viewed online at: <https://www.einpresswire.com/article/668501805>

EIN Presswire's priority is source transparency. We do not allow opaque clients, and our editors try to be careful about weeding out false and misleading content. As a user, if you see something we have missed, please do bring it to our attention. Your help is welcome. EIN Presswire, Everyone's Internet News Presswire™, tries to define some of the boundaries that are reasonable in today's world. Please see our Editorial Guidelines for more information.

© 1995-2023 Newsmatics Inc. All Right Reserved.