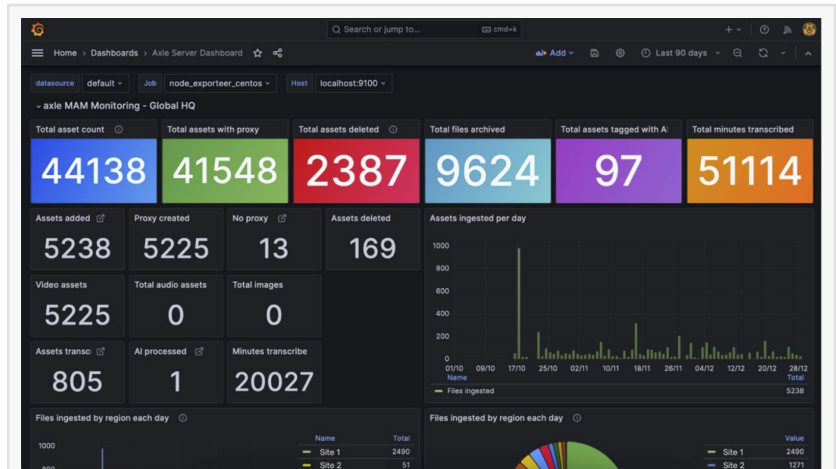




# Axle AI Dashboard provides new visibility for AI and media workflows; live webinars tomorrow

*Open-source platform allows intuitive monitoring of AI, storage, network and transcoding processes in your browser*

BOSTON, MA, USA, January 31, 2024 /EINPresswire.com/ -- [Axle AI](#) proudly presents the Axle AI Dashboard – a revolutionary solution set to redefine how video editing teams can manage and monitor their operations. This powerful monitoring front end, powered by the Grafana open source platform, offers users unparalleled visibility and efficiency. It's a great way to bring a wide range of automated and human processes under one roof, right in your browser.



Axle AI Dashboard screenshot

“

Managing AI, transcoding, storage and networks from a single browser-based dashboard is a game changer. Video technology is moving incredibly fast, and Axle AI Dashboard lets you see what's happening.”

*Sam Bogoch, CEO, Axle AI*

Hundreds of interface modules are already available, including for many of the processes that a video editing team would need. The system can easily be extended by installing or developing further modules. Discover how the Axle AI Dashboard can revolutionize your media workflows by signing up for our launch [webinar](#) on Thursday, February 1st.

- Session 1:

10am EST, Feb. 1st:

[https://us02web.zoom.us/webinar/register/WN\\_HbDFD88lTcmlMnmY1mfmWg](https://us02web.zoom.us/webinar/register/WN_HbDFD88lTcmlMnmY1mfmWg)

- Session 2:

2pm EST, Feb. 1st:

[https://us02web.zoom.us/webinar/register/WN\\_AcDluP9AR0axA5WQyXiLWg#/registration](https://us02web.zoom.us/webinar/register/WN_AcDluP9AR0axA5WQyXiLWg#/registration)

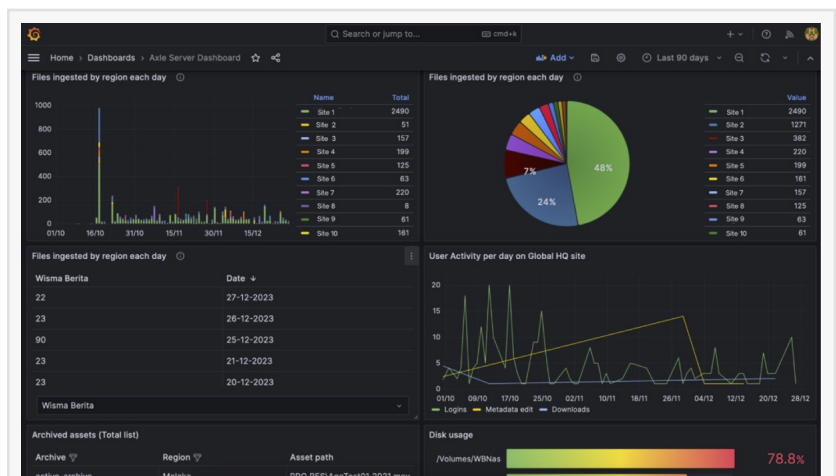
Designed to bring clarity and control to your media supply chain, Axle AI Dashboard stands as a game-changer in media workflows. Powered by the Grafana open-source BI (business intelligence) platform, this innovative solution brings clarity and control to your media supply chain, ensuring you stay ahead of the curve. It can be installed on a server at your location, or run cloud-hosted. Most importantly, hundreds of interfaces are already available and it works with a wide range of software applications, network tools and video processing apps. Axle's initial offering is already being used at large broadcasters and small-to-midsize video editing teams.

#### Key Features of Axle AI Dashboard:

1. Visual and Intuitive: Real-time insights into media production, preparation, and delivery workflows with visually compelling and intuitive graphics.
2. Customizable: Tailor the dashboard to meet your preferences, ensuring a personalized user experience that aligns seamlessly with your workflow needs.
3. Health Reports: Stay informed about the real-time health status of Axle AI software, network, and storage with comprehensive reports.
4. Timely Milestone Notifications: Receive timely notifications about key production milestones, eliminating worries about delays or faults.

#### Unmatched Operational Visibility:

Axle AI Dashboard offers the highest operational visibility, monitoring file processes, production teams, and workflows in real-time. Whether you are involved in content production, archiving, or transferring media, this powerful tool allows you to track, trace, and maintain full visibility of your



Axle AI Dashboard's user interface can easily be reconfigured with open source modules



Axle AI Dashboard logo

workflows and operations.

About Axle AI, Inc.

We make media smarter. Axle AI is the recognized leader in developing radically simple media management software. Its solutions have helped over 1,000 organizations improve the way they create, share, and store digital video content with media management solutions that are easy to install, use and afford. Axle's radically simple media management uniquely addresses a burgeoning need and has caught on rapidly among video professionals in post-production, education, broadcast, corporate, sports, house of worship, non-profit, advertising-marketing, and government organizations worldwide. Axle AI, Inc. is a privately held company; its founders have extensive industry experience in media asset management for creative applications. Investors include Stadia Ventures, Jason Calacanis, LAUNCH accelerator, and Quake Capital. Learn more at <https://www.axle.ai>.

Join Our Launch Webinar:

Discover how the Axle AI Dashboard can revolutionize your media workflows by signing up for our launch webinar on Thursday, February 1st.

- Session 1:

10am EST: [https://us02web.zoom.us/webinar/register/WN\\_HbDFD88lTCmlMnmY1mfmWg](https://us02web.zoom.us/webinar/register/WN_HbDFD88lTCmlMnmY1mfmWg)

- Session 2:

2pm EST

[https://us02web.zoom.us/webinar/register/WN\\_AcDluP9AR0axA5WQyXiLWg#/registration](https://us02web.zoom.us/webinar/register/WN_AcDluP9AR0axA5WQyXiLWg#/registration)

Seize this opportunity to embrace the future of media management with Axle AI Dashboard. Clarity and control can now be a reality – join us on this transformative journey!

Agustina Lopez Castro

Axle AI, Inc.

+1 617-702-0943

[email us here](#)

---

This press release can be viewed online at: <https://www.einpresswire.com/article/685143011>

EIN Presswire's priority is source transparency. We do not allow opaque clients, and our editors try to be careful about weeding out false and misleading content. As a user, if you see something we have missed, please do bring it to our attention. Your help is welcome. EIN Presswire, Everyone's Internet News Presswire™, tries to define some of the boundaries that are reasonable in today's world. Please see our Editorial Guidelines for more information.

© 1995-2024 Newsmatics Inc. All Right Reserved.