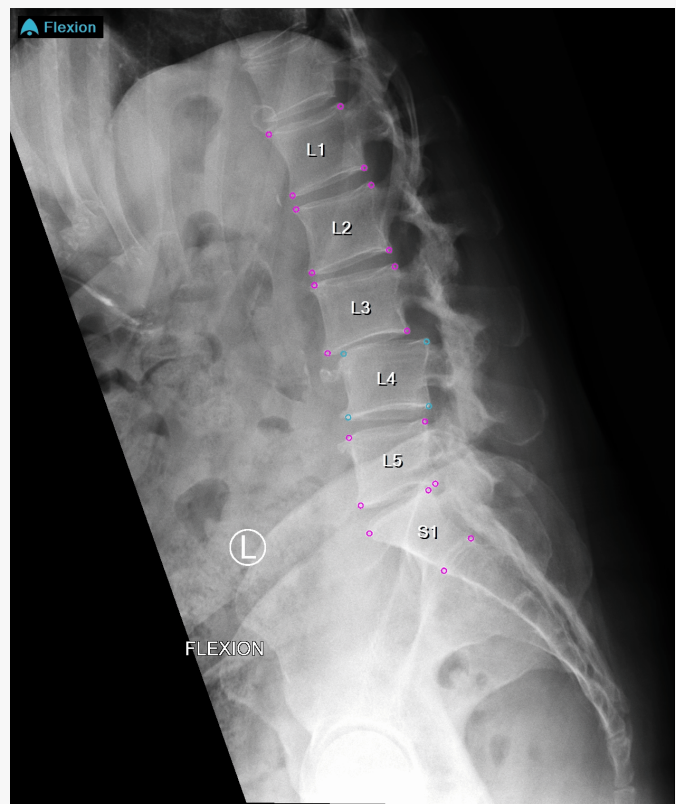


Medical Metrics, Inc. will be demonstrating SpineCAMP™ at Spine Summit, Feb 21 - 24 (Booth # 230)

HOUSTON, TX, USA, February 20, 2024 /EINPresswire.com/ -- Medical Metrics Inc. ("MMI" or the "Company"), a global leader in spine image analysis solutions and services, is excited to announce its participation at the upcoming Spine Summit Meeting in Las Vegas, NV, February 21 – February 24, 2024. MMI will be showcasing SpineCAMP™, the Company's [FDA cleared](#) Software as a Medical Device (SaMD) at its booth, #230. SpineCAMP is a fully-automated AI-powered solution that analyzes radiographs (X-ray images) of the spine to generate quantitative metrics and enhanced visualizations that are intended to support and augment clinical decision making. SpineCAMP is designed to seamlessly inject analysis results into imaging workflows within the clinician's image viewing infrastructure. The MMI team will be available to demonstrate SpineCAMP to interested meeting attendees.

"The Spine Summit's theme of embracing technology and innovation to improve patient care aligns perfectly with our mission" said N. Shastry Akella, PhD, MMI's President and Chief Operating Officer. "We look forward to demonstrating SpineCAMP to neurosurgeons and researchers, and to discussing how advances in the field of AI could meaningfully augment their use of radiographic imaging in the management of spine disorders".

SPINECAMP™
Actionable Insights



Click to View Stabilized Imaging

"We are excited to connect with clinical professionals and colleagues from the spinal device industry at the Spine Summit, and to demonstrate our imaging informatics capabilities" said Dennis Farrell, VP Medical Device Commercialization at MMI. "We look forward to sharing how the precision metrics provided by SpineCAMP can aid in objective assessment of spinal instability, alignment, fusion, motion preservation, and implant performance. Initial feedback from early adopting sites has been very positive, and we are thrilled by the reception."

MMI invites all attendees to visit Booth #230 in the exhibit hall to learn more about SpineCAMP, and discover how the Company's solutions offer the potential to reshape the future of spinal image assessment. Key highlights of MMI Spine Summit participation include:

- Demonstrations of SpineCAMP; come for a "test drive;"
- Exploration of collaborative research opportunities through MMI sponsored [Research Grant Program](#); and
- Opportunities to explore potential strategic and distribution partnerships

Since its founding in 2000, MMI, an ISO 9001:2015 certified medical imaging services and solutions company, has built a strong reputation for high-quality image analyses in support of clinical trials and research. MMI's scientific expertise is a result of supporting over three hundred spine studies, resulting in hundreds of peer-reviewed publications and conference proceedings. More information about MMI can be found by visiting www.medicalmetrics.com.

More information on SpineCAMP may be found on www.spinecamp.ai. Additional questions about SpineCAMP or would like to learn more? Please email spinecamp@medicalmetrics.com.

###

Dennis Farrell
 Medical Metrics
 +1 346-200-9930
 dfarrell@medicalmetrics.com

SPINECAMP™

Patient:
 Referring Physician:
 Study Instance: 1.2.154.69877.30.1568.05119380.0
 Study Time: 01-Jan-2023 08:00:00
 Analysis Time: 20-Feb-2024 08:52:37 (UTC-06:00)
 Software Version: 1.2
 Analysis: Lumbar Spine Flexion/Extension

Flexion **Extension**

Image not for diagnostic use. Image not for diagnostic use.

Intervertebral Metrics			
Level	Rotation (deg)	Translation (%)	Translation (mm)
L1-L2	9.4	5.4	1.7
L2-L3	10.3	6.5	2.1
L3-L4	8.9	10.5	3.5
L4-L5	4.8	2.2	0.7
L5-S1	3.0	0.7	0.2

L1-S1 Range of Motion 36.4°

The translation at L3-L4 exceeds 3 mm, which may be suggestive of spinal instability [Simmonds, JNS, 2015]
 ** A standardized endplate AP depth was used to produce mm results.

Disclaimer:
 Spine CAMP should not be used in-lieu of full patient evaluation or solely relied upon to make or confirm a diagnosis.
 Medical Metrics, Inc. | 2121 Sage Rd Suite 300 | Houston, TX 77056 | (713) 890-7900 | camp.counselor@medicalmetrics.com

Click to Enlarge and View Sample Report highlighting out of range findings

This press release can be viewed online at: <https://www.einpresswire.com/article/689943879>

EIN Presswire's priority is source transparency. We do not allow opaque clients, and our editors try to be careful about weeding out false and misleading content. As a user, if you see something we have missed, please do bring it to our attention. Your help is welcome. EIN Presswire, Everyone's Internet News Presswire™, tries to define some of the boundaries that are reasonable in today's world. Please see our Editorial Guidelines for more information.

© 1995-2024 Newsmatics Inc. All Right Reserved.