

Unleashing The Power Of The Industrial Metaverse: Redefining The Boundaries Of Innovation And Industry

In collaboration with key industrial stakeholders, we are thrilled to announce the release of our groundbreaking industrial Metaverse report.

TORONTO, CANADA, February 20, 2024

/EINPresswire.com/ -- In collaboration with key industrial stakeholders, we are thrilled to announce the release of our groundbreaking report, "[Unleashing the Power of the Industrial Metaverse](#)."

This report presents a comprehensive analysis of the Industrial Metaverse, exploring its potential trajectories, real-world applications, and tangible benefits through insightful case studies of industry pioneers.

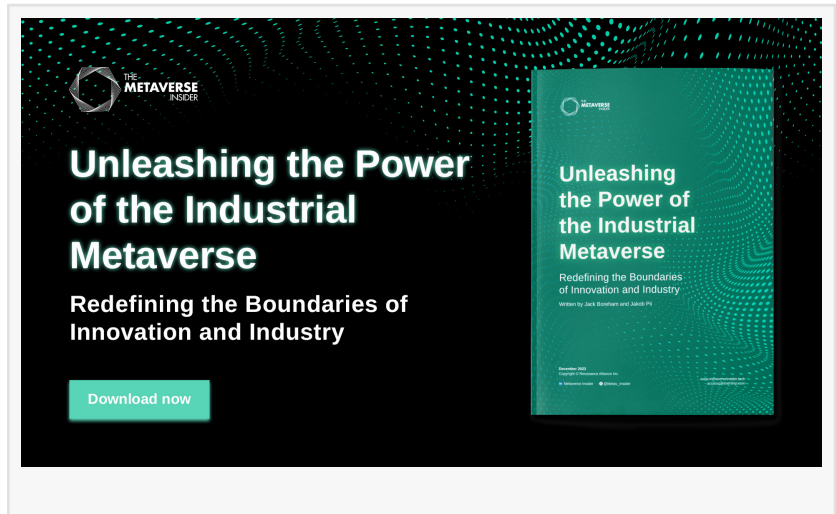
At the core of its significance lies the Industrial Metaverse's pivotal role in addressing skilled labor shortages by reducing reliance on human personnel. This advanced digital landscape not only enhances operational efficiency and productivity but also aligns seamlessly with the United Nations' Sustainable Development Goals.

To dispel prevailing misconceptions, the report introduces the [Metaverse Insider's Metaverse Nexus](#), an innovative categorization that explores three interconnected domains: Social Metaverse, Enterprise Metaverse, and Industrial Metaverse. These domains, with their intricate overlaps, highlight the nuanced interactions between social, enterprise, and industrial aspects of the Metaverse.

Topics Covered Include:

Defining the Industrial Metaverse: An exploration of the term, unraveling its implications, and discerning its pivotal role in shaping the future of industries.

Harnessing the Industrial Metaverse: Strategic insights on effectively leveraging Metaverse technologies to elevate industrial processes and operations.



From Concept to Reality: A showcase of successful implementations by industry leaders, including KIT-AR, Masters of Pie, Bentley Systems, Siemens, RealWear, NavVis, BMW, and NVIDIA's Omniverse platform.

By the Numbers: Robust statistical insights and data on the adoption of Industrial Metaverse, illustrating its burgeoning growth and impactful presence.

Industrial Metaverse Adoption: An exploration of the trends and challenges associated with the widespread integration of Industrial Metaverse technologies.

Policy Implications of An Industrial Metaverse: A discerning look into the regulatory and policy considerations crucial to navigating the evolving landscape of the Industrial Metaverse.

A New Dawn for Industry: A visionary exploration, envisioning the transformative possibilities and unprecedented opportunities that the Industrial Metaverse unfolds for the industrial landscape.

Download the FREE report [here](#).

Media Contact:

Jack Boreham

Email: Jack@metaverseinsider.tech

For media inquiries or additional information regarding the report "Unleashing the Power of the Industrial Metaverse," please contact Jack Boreham.

Jack Boreham

Metaverse Insider

7914135370 ext.

[email us here](#)

Visit us on social media:

[Twitter](#)

[LinkedIn](#)

[Instagram](#)

[YouTube](#)

This press release can be viewed online at: <https://www.einpresswire.com/article/689991842>

EIN Presswire's priority is source transparency. We do not allow opaque clients, and our editors try to be careful about weeding out false and misleading content. As a user, if you see something we have missed, please do bring it to our attention. Your help is welcome. EIN Presswire, Everyone's Internet News Presswire™, tries to define some of the boundaries that are reasonable

in today's world. Please see our Editorial Guidelines for more information.

© 1995-2024 Newsmatics Inc. All Right Reserved.