

"Connect with Type" – Morisawa Fonts Subscription Service Launches in Singapore

Click here to visit the website:
<https://en.morisawafonts.com/>

OSAKA, JAPAN, February 29, 2024 /EINPresswire.com/ -- Morisawa Fonts is a subscription service that offers unlimited access to over 2,000 high-quality and diverse fonts, including Japanese fonts as well as fonts for languages from around the world.

While the service has been widely used in Japan, in response to the increasing requests for purchases from outside Japan, Morisawa Fonts will begin offering the service to Singapore on February 29, 2024 with the release of its English website.

New Purchase 10% OFF Campaign

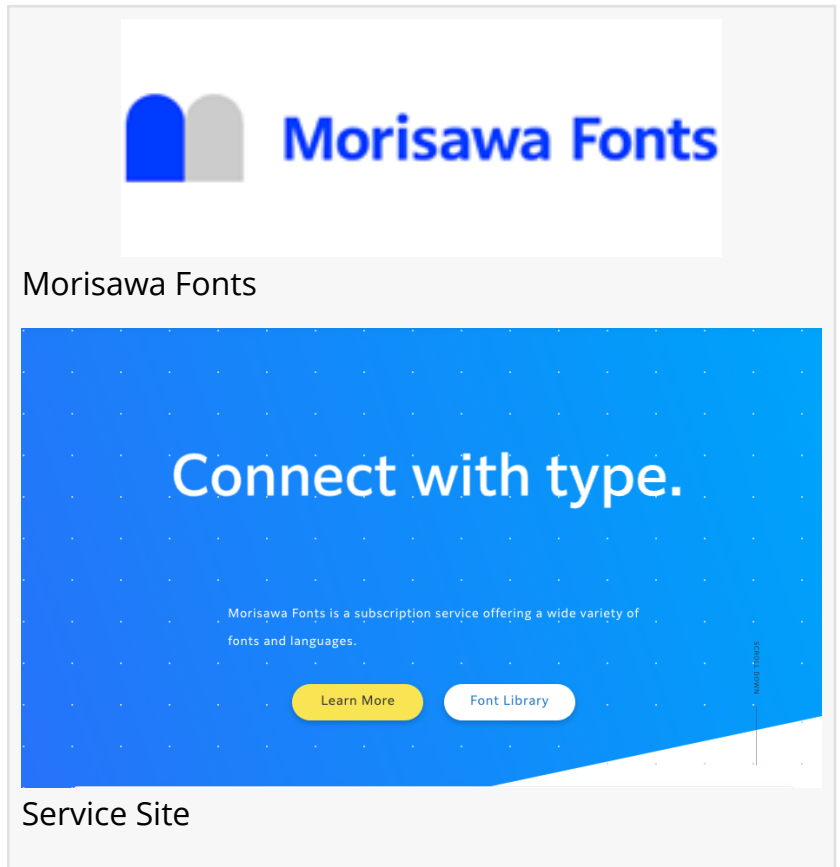
Campaign period: February 29, 2024 (Thursday) to May 31, 2024 (Friday) 23:59 (Japan time)
To participate in the campaign, please enter the coupon code SGP10 when purchasing on the website.

*This campaign is exclusive to the English website.

The Japanese service of Morisawa Fonts is not eligible for this discount campaign.

Since our invention of phototypesetter in 1924, Morisawa has strived to connect the past and future of typography culture through utilizing the newest innovations and technologies available. Our mission is to create and design a wide selection of typefaces which provide communication solutions for our clients. We empower our client's voice and help their brands and products to succeed in their endeavors on print as well as the digital frontier.

The subscription service provides unlimited use of over 2,000 fonts, including fonts for languages from around the world.



It features a variety of high-quality fonts popular with creators, such as Shin Go, Ryumin, A1 Mincho, A1 Gothic, Hiragino fonts, Latin fonts for up to 151 languages, as well as fonts that can be used in various languages such as Chinese (traditional and simplified), Korean, and Thai. The number of available fonts is increasing every year (click here for the new 2023 fonts - Japanese site), and the lineup will continue to expand in 2024.

(Hiragino Font is a font of SCREEN Graphic Solutions Co.,Ltd.)

Font lineup as of February 29, 2024 (partial):

Japanese fonts - 532 families, 2234 fonts

Latin fonts - 71 families, 632 fonts

Chinese (Simplified) - 9 families, 24 fonts

Chinese (Traditional) - 7 families, 17 fonts

Korean - 4 families, 19 fonts

Thai - 13 families, 92 fonts

(And many more)

You can easily install fonts from the website, or manage fonts with the Desktop Manager app which allows for instant ON/OFF toggling and easy activation of fonts.

Furthermore, the handy font collection feature allows users to share font lists, enabling more efficient collaboration.

Morisawa Fonts will continue to expand this service overseas, providing a unified font environment, connecting designers at our own and overseas bases as well as those living abroad, and promoting creative works that transcend national borders.

☐For inquiries regarding this matter, please contact:
Morisawa Fonts Overseas Products

MORISAWA Inc.

Location: 6-25, Shikitsu Higashi 2-chome, Naniwa-ku, Osaka-shi, Osaka 556-0012, Japan



Website:

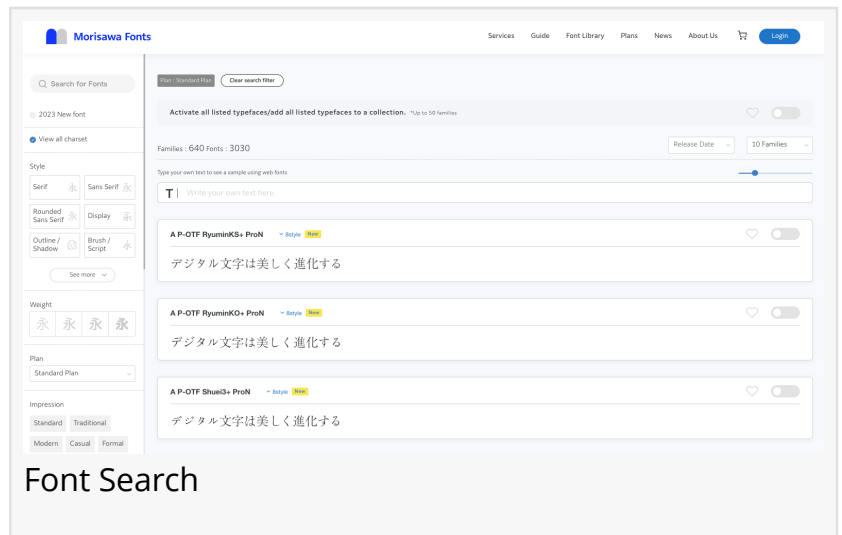
<https://www.morisawa.co.jp/>

<https://en.morisawafonts.com/about/>

Morisawa Fonts Overseas Products

MORISAWA Inc.

[email us here](#)



Font Search

This press release can be viewed online at: <https://www.einpresswire.com/article/691921494>

EIN Presswire's priority is source transparency. We do not allow opaque clients, and our editors try to be careful about weeding out false and misleading content. As a user, if you see something we have missed, please do bring it to our attention. Your help is welcome. EIN Presswire, Everyone's Internet News Presswire™, tries to define some of the boundaries that are reasonable in today's world. Please see our Editorial Guidelines for more information.

© 1995-2024 Newsmatics Inc. All Right Reserved.